



The Versatile BI Solution!

Click&DECiDE Business Application Intelligence

Version 2018 Setup Manual

Last Edition March 8th, 2018

V16 and greater

1. System Requirements

The Click&DECiDE setup program requires the following software's to be installed on your computer. Unless specified otherwise, the components are automatically installed if missing

1.1. Desktop Version (Express Edition) 64-bit

- Microsoft .NET Framework 4.5 SP1 or greater
- SQL Server Native Client 2005 SP3
- Microsoft Visual C++ 2010 x64 Redistributables
- Microsoft Visual C++ 2012 x64 Redistributables

1.2. Web Server Version (Enterprise Edition) 64-bit

Microsoft IIS (default version from system version) (*)

- Microsoft .NET Framework 4.5 SP1
- Microsoft Office Web Components 2003 (**)
- SQL Server Native Client 2005 SP2 or greater
- SQL Server 2008 SP3 or greater
- Microsoft Visual C++ 2010 x64 Redistributables
- Microsoft Visual C++ 2012 x64 Redistributables
- Java 7 Update 15 (64-bit)

(*) Must be installed before launching Click&DECiDE Setup.

(**) only required for the use of the Microsoft Cubes (OWC)

Note: If no previous SQL Server is found, the SQL Server Express 2008 is proposed to be installed.

About the IIS installation, see the FAQ:

http://www.clickndecide.com/sites/default/files/assets/files/faq/kba203_how_to_install_iis.pdf

About the IIS configuration, see also the FAQ:

http://www.clickndecide.com/sites/default/files/assets/files/faq/kba201_how_to_parameterize_iis_on_windows_2008_for_clickndecide_1.pdf

and

http://www.clickndecide.com/sites/default/files/assets/files/faq/kba241_how_to_parameterize_iis_on_windows_2012_for_clickndecide.pdf

If you are using Microsoft SQL Server 2012, see the FAQ:

http://www.clickndecide.com/sites/default/files/assets/files/faq/kba242_how_to_connect_to_sql_server_2012.pdf

2. Environment

2.1. Desktop Version (Express Edition or Click&DECiDE Builder) 64-bit

System:

- Windows 7 (64 bits)
- Windows 8.1 (64-bit)
- Windows 10 (64-bit)
- Windows 2008 R2
- Windows 2012 R2

Memory:

- Minimum RAM: 2 GB
- Minimum Hard disk: 200 MB without samples, 700 MB with samples

2.2. Web Server Version (Enterprise Edition) 64-bit

System:

- Windows 2008 R2
- Windows 2012 R2

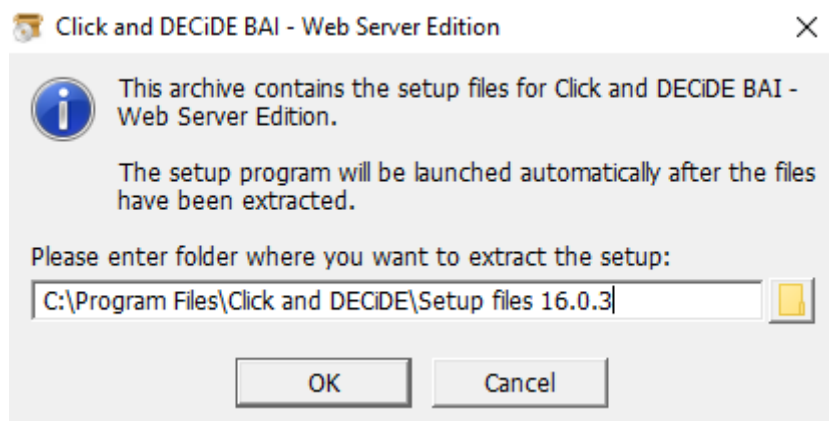
Memory:

- Minimum RAM: 4 GB
- Minimum Hard disk: 1 GB

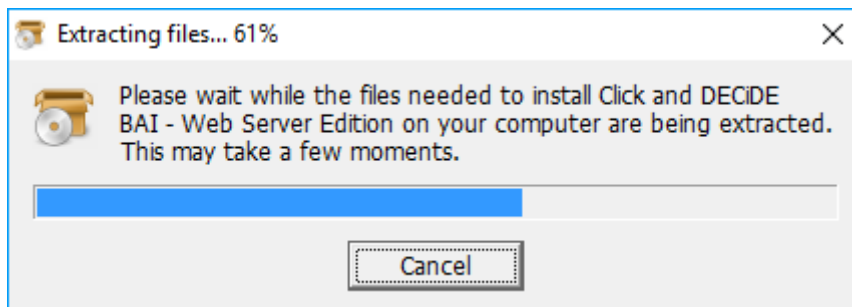
3. Installation

If you have downloaded the software, please perform the following steps:

1. Double-click the downloaded file (for example CnD-BAI.WebServer.16 or using the permanent links giving always the most recent version:
 - For Click and DECiDE BAI Enterprise Edition:
 - http://license.clickndecide.com/downloads/cndent_latest.aspx
 - For Click and DECiDE BAI Express Edition:
 - http://license.clickndecide.com/downloads/cndexp_latest.aspx
2. Extract the content by default to the following directory:
C:\Program Files\Click and DECiDE\Setup files



Click OK

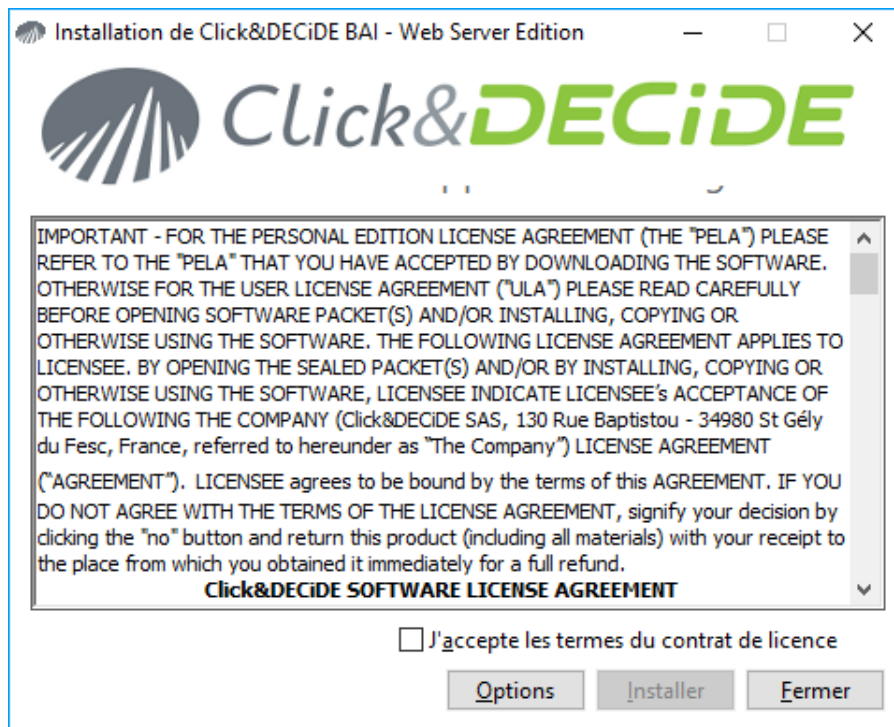


3. Note the Setup.exe file will automatically run to start the installation.

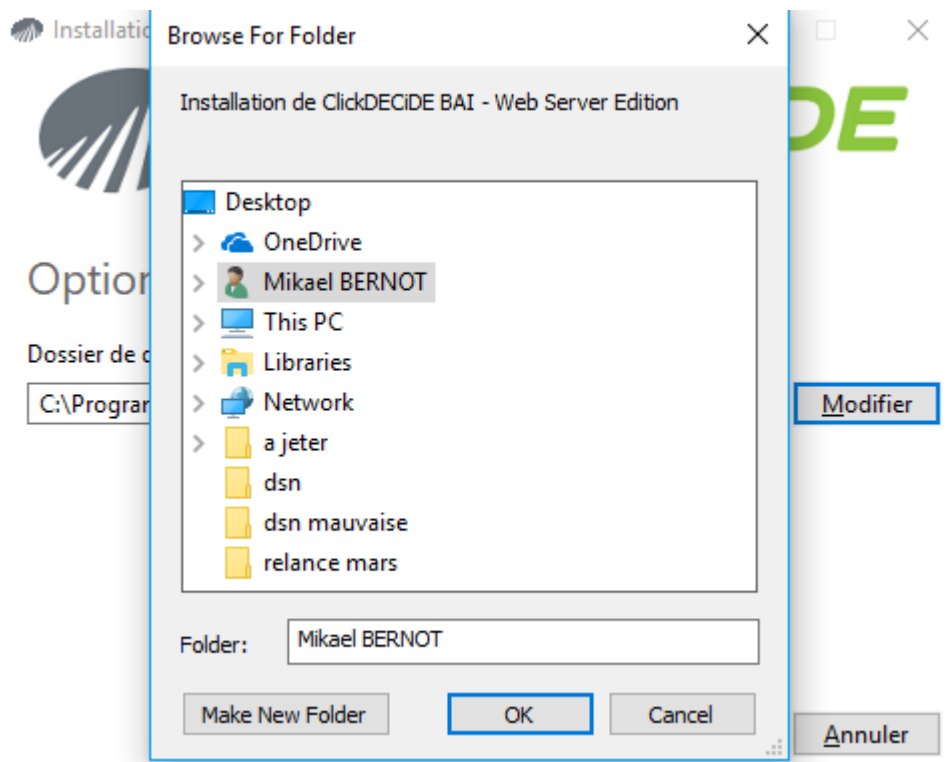
3.1. Running the Setup.exe File

Perform the following steps:

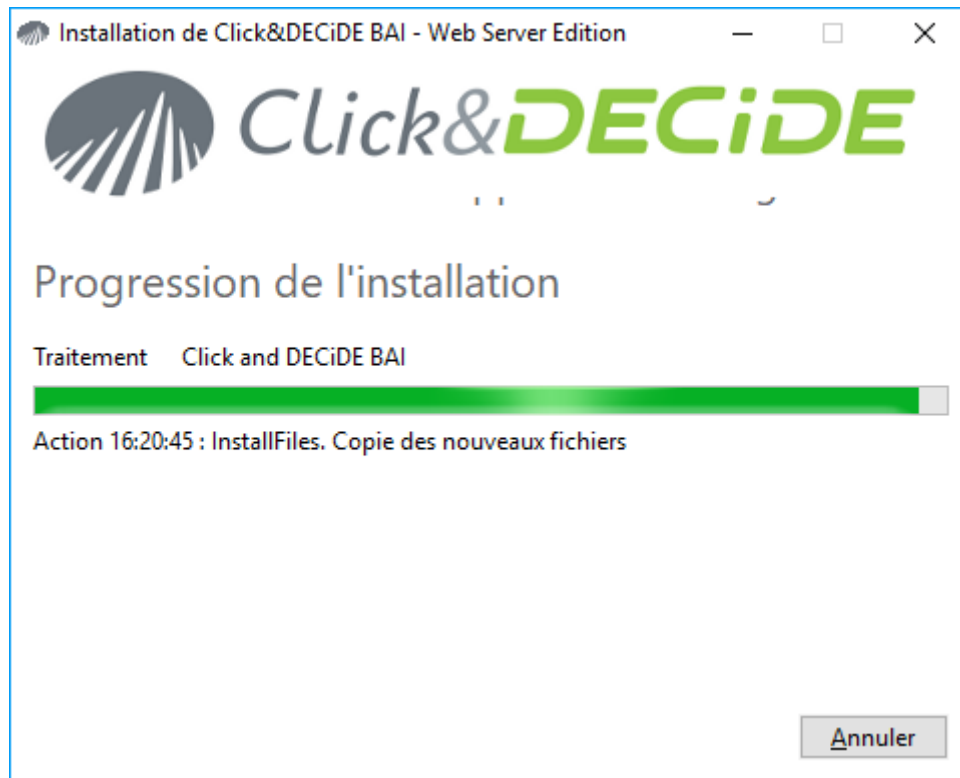
1. Double-click the downloaded file. The following screen will appear:



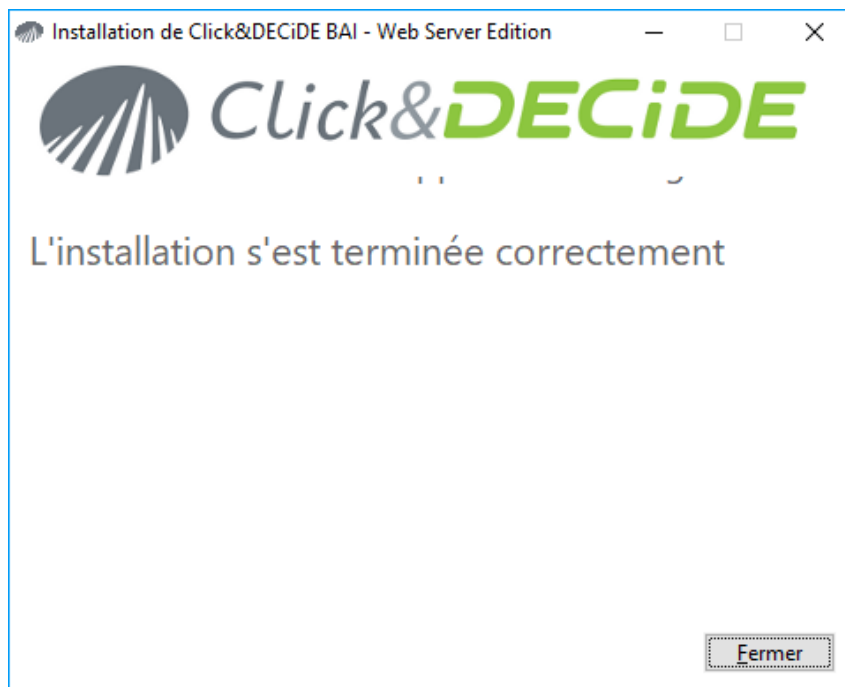
2. Click Options if you want to install the product in a different file.



3. Select **I accept the terms in the license agreement** and click **Next>** to continue.



4. Wait that the installation is finished.



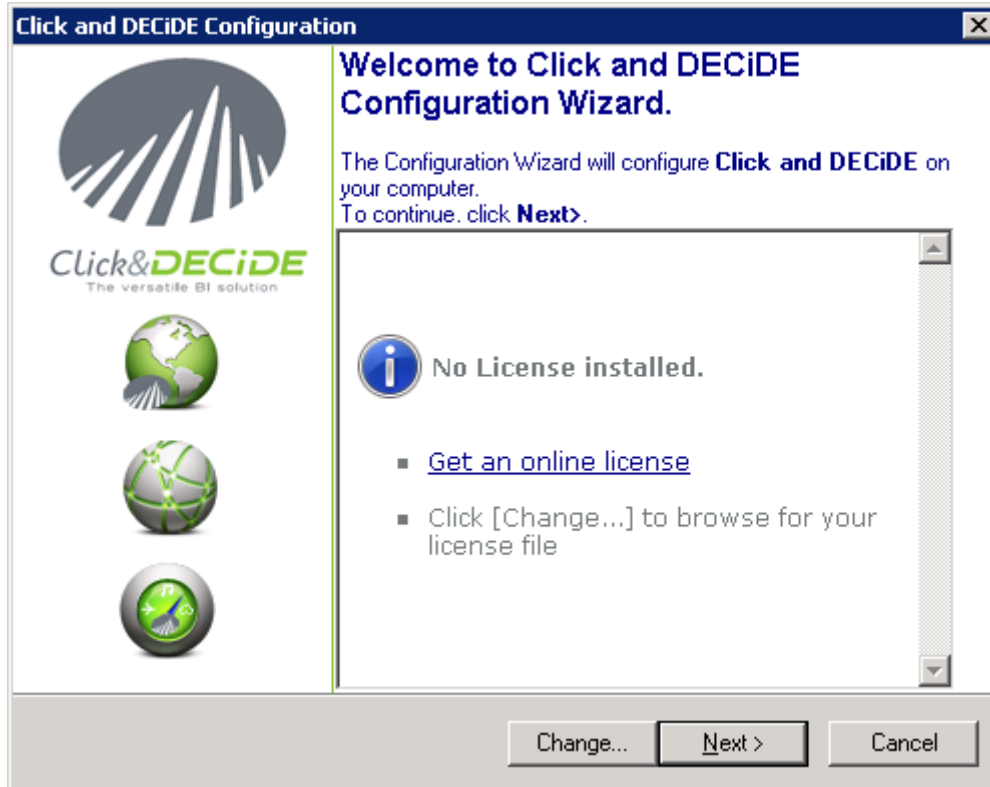
5. Click Close

3.2. Running the Configuration wizard.

Wait for the Configuration wizard starting automatically

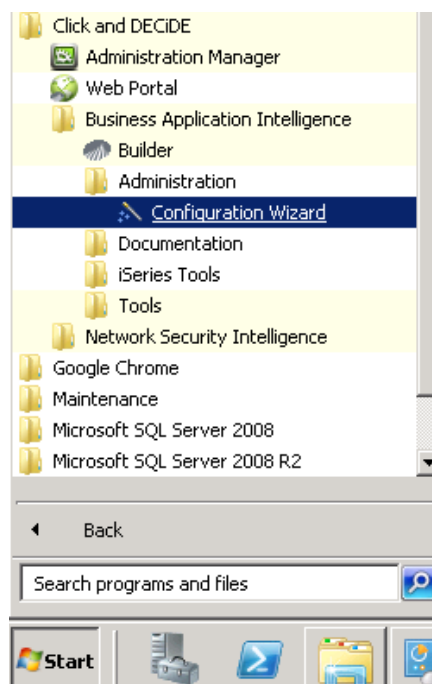
3.2.1. License Certificate

- Click **Change...** to select your license certificate or click **Get an online license** if you do not have a license certificate file (license.d7cert or _license.cert):



Note 1: if you wish to run later again this configuration wizard, run the command:

Start> All Programs> Click and DECIDE> Business Application Intelligence> Administration> Configuration Wizard



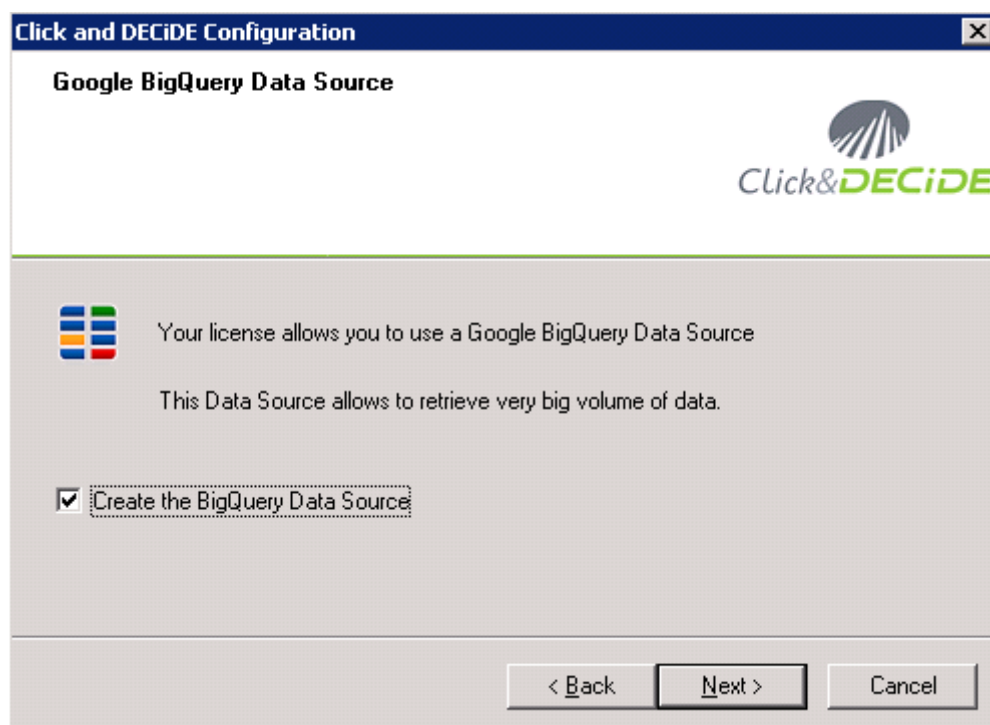
Note 2: if you double-click on a license certificate file named license.d7cert, that also will launch automatically the Configuration Wizard. Click **Next** until the end of all steps proposed as describe below.



- Note the information concerning your license certificate will appear. In the example above, the license certificate displays information about the Company Name, the Edition used. The certificate also displays information about the Web Portal license if exists (for Enterprise Edition).

3.2.2. Optional Google BigQuery Data Source

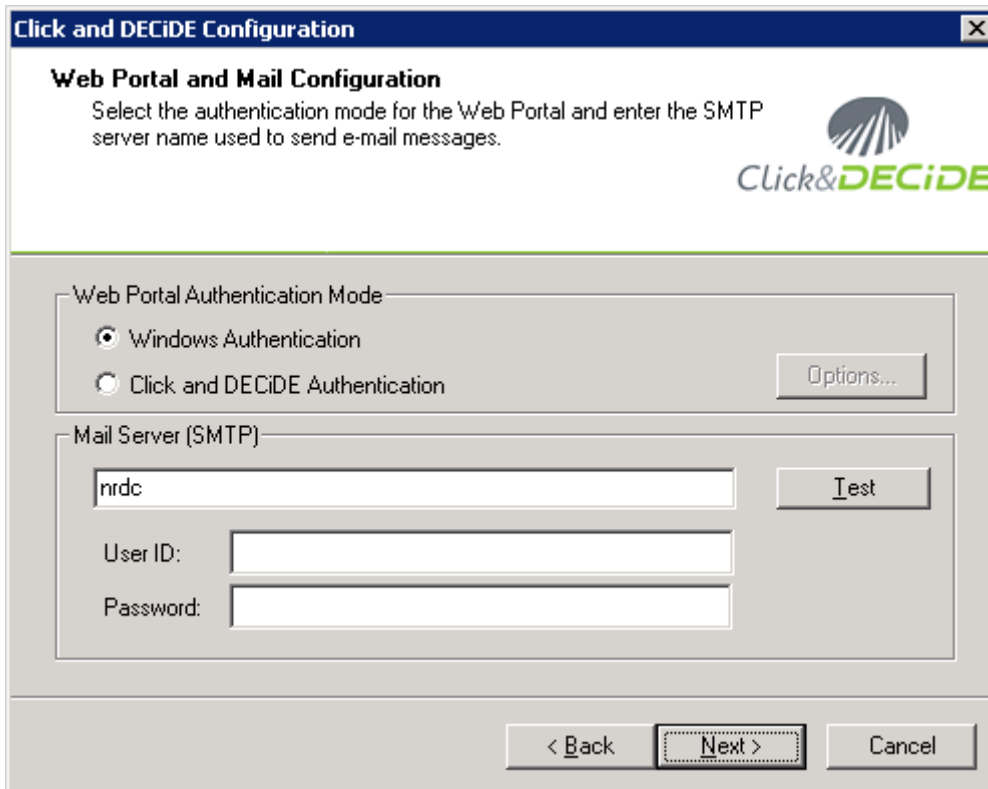
- Click **Next>** to continue. This optional screen will appear if your license certificate contain the option for **Google BigQuery Data Source**:



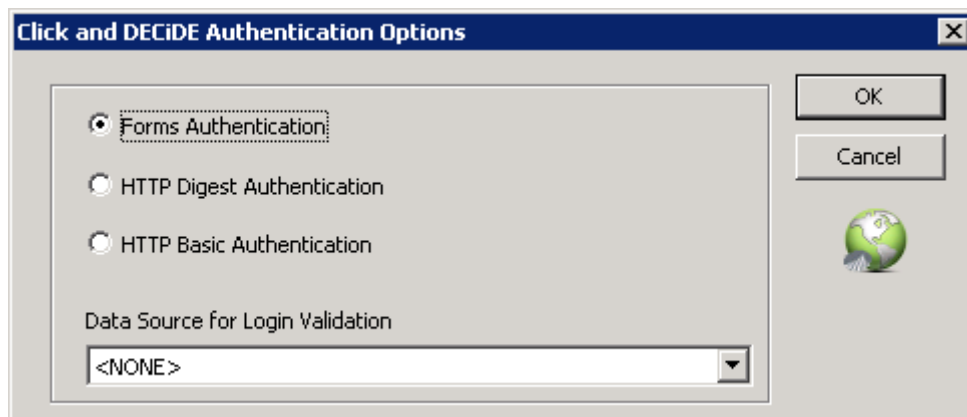
Uncheck this option if you do not want to create this Data Source now.

3.2.3. Authentication Mode and Mail Server

- Click **Next>** to continue. The **Web Portal and Mail Configuration** screen appears.



- Specify the **Web Portal Authentication Mode** you want to use.
Note: Windows Authentication selected by default is recommended by Click&DECiDE. If this option is greyed, that means it has not been activated in IIS.
- If nevertheless you need to use the **Click and DECiDE Authentication**, the Options button will propose 3 choices:



If using a HTTP link:

- The **Forms Authentication**: the login goes through a Click&DECiDE form in the Web Portal page. The password is not encrypted and Data Source Login can be used to connect to the Web Portal.
- The **HTTP Digest Authentication**: the password is hashed. No Data Source Login can be used, but this mode is more secured than the Basic Authentication.

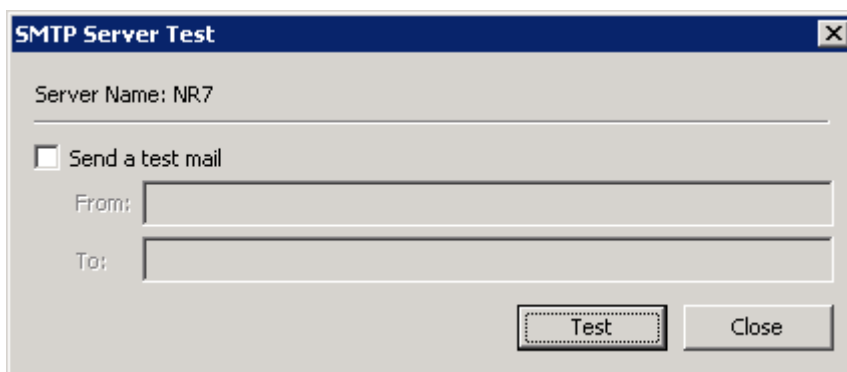
- The **HTTP Basic Authentication**: the password is not encrypted (clear text). A Data Source Login can be used to connect to the Web Portal.

If using a HTTPS link:

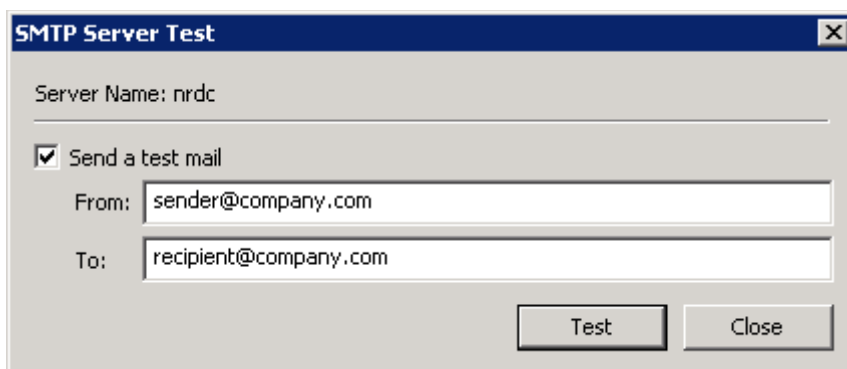
- In the 3 above modes, the password are encrypted or hashed.

12. Specify the **Mail Server Name**. Optional: if your Mail Server requires an Authentication, enter the required User ID and Password, otherwise leave blank.

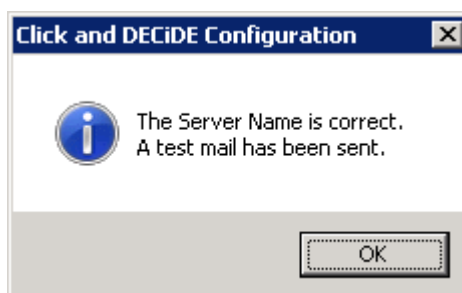
13. Click **Test** to check your Mail Server Name.



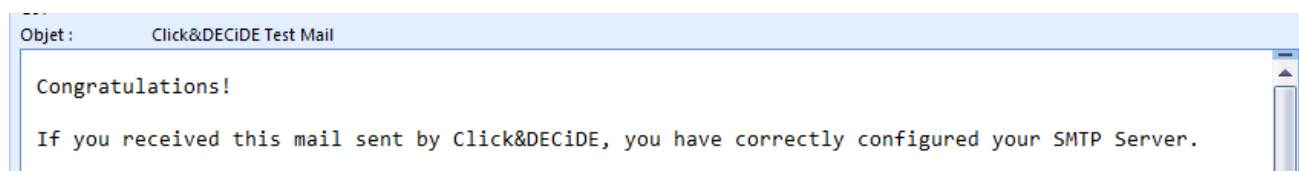
Optional: you can send a test mail before clicking the **Test** button by checking on the box “Send a test mail” and feeding the **From** and **To** boxes with the appropriate e-mail addresses:



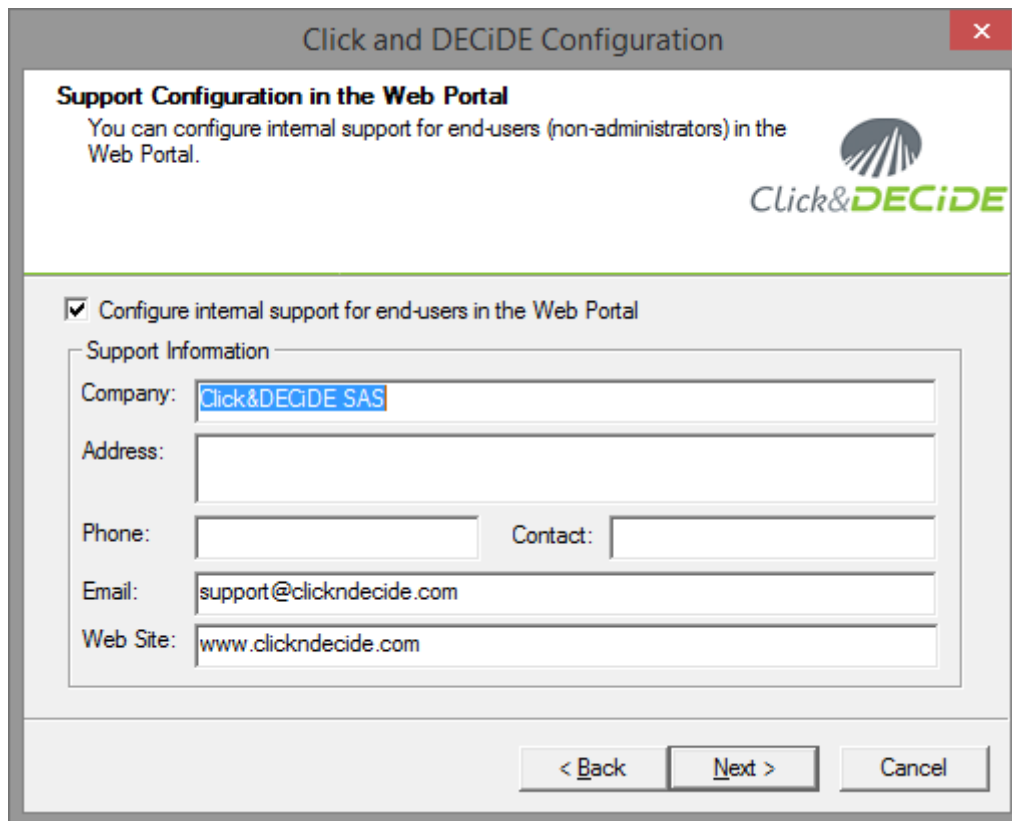
If successful this message is displayed:



Then check your e-mail box to see if the message was sent correctly. If yes, you should receive this e-mail:



3.2.4. Optional Support configuration in the Web Portal for end-users



The screenshot shows a configuration window titled "Click and DECiDE Configuration" with a close button (X) in the top right corner. The main heading is "Support Configuration in the Web Portal". Below the heading, there is a sub-heading: "You can configure internal support for end-users (non-administrators) in the Web Portal." and the Click&DECiDE logo.

A checkbox is checked and labeled "Configure internal support for end-users in the Web Portal". Below this is a section titled "Support Information" containing several input fields:

- Company: Click&DECiDE SAS
- Address: (empty)
- Phone: (empty) Contact: (empty)
- Email: support@clickndecide.com
- Web Site: www.clickndecide.com

At the bottom of the dialog, there are three buttons: "< Back", "Next >", and "Cancel".

The above screen will be displayed through the Web Portal according to the current Group if the users press the <Support> link here:



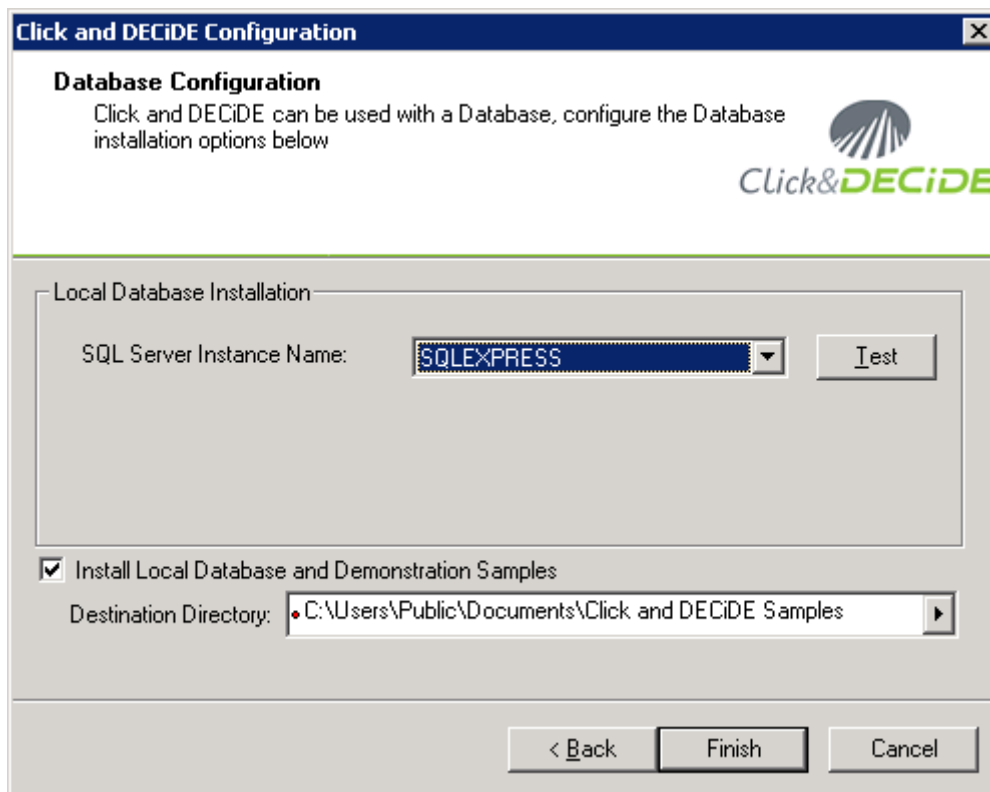
If the Group is a "Super Administrator" Group, then clicking the Support link will display information about how to find support directly with Click&DECiDE Company.

If the user does not belong to a Super Administrator Group, then the information displayed by the Support link is the you have entered here when installing the product.

Note: the "Company" name is mandatory, as well as "Phone" number OR "Email" address. Other fields are optional.

3.2.5. Local Database Configuration

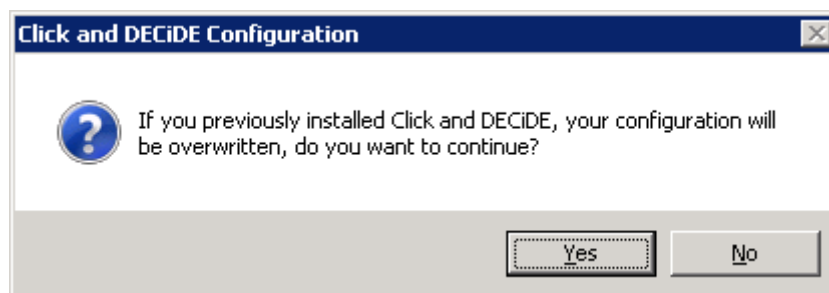
14. Click **Next>**. The **Local Database Configuration** screen appears.



15. Note the **SQL Server Instance Name** is SQL Express by default.

Note: this last step consists of inserting the required tables used by the Alerts and the Statistics Management Console and, optionally, the demonstration samples tables in the Local SQL Server. If you do not wish to install the demonstration samples, uncheck the “Install Local Database and Demonstration Samples”. These examples can give you some ideas about how to make some nice reports.

16. Click **Finish** to terminate the setup.

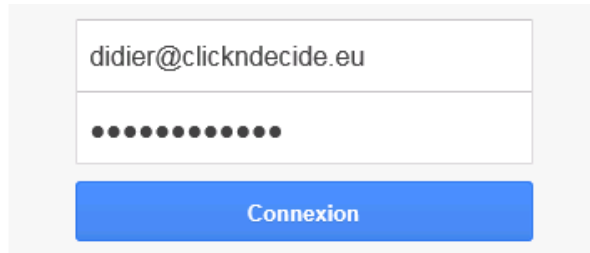


17. Click **Yes** to continue.

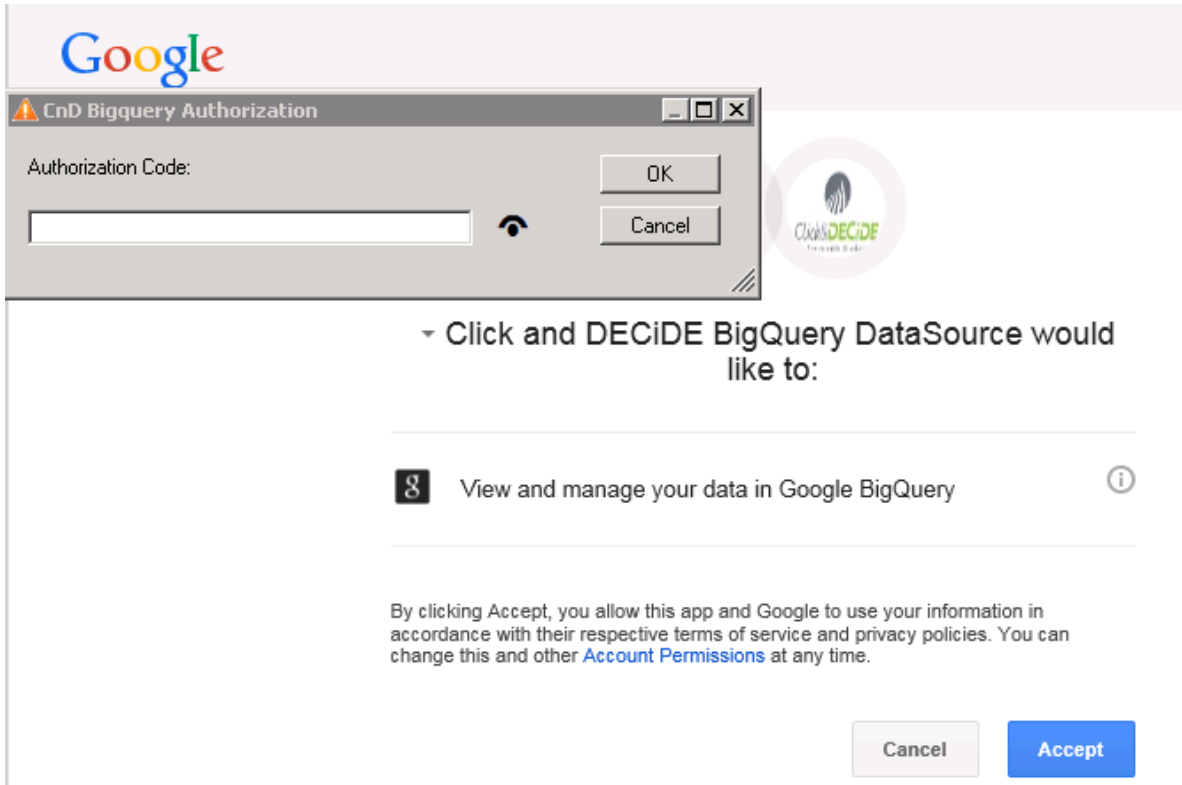
18. Optional: if the **Google BigQuery Data Source** has been activated at the beginning of the Configuration Wizard, the next screen is proposed in order to create this data source:



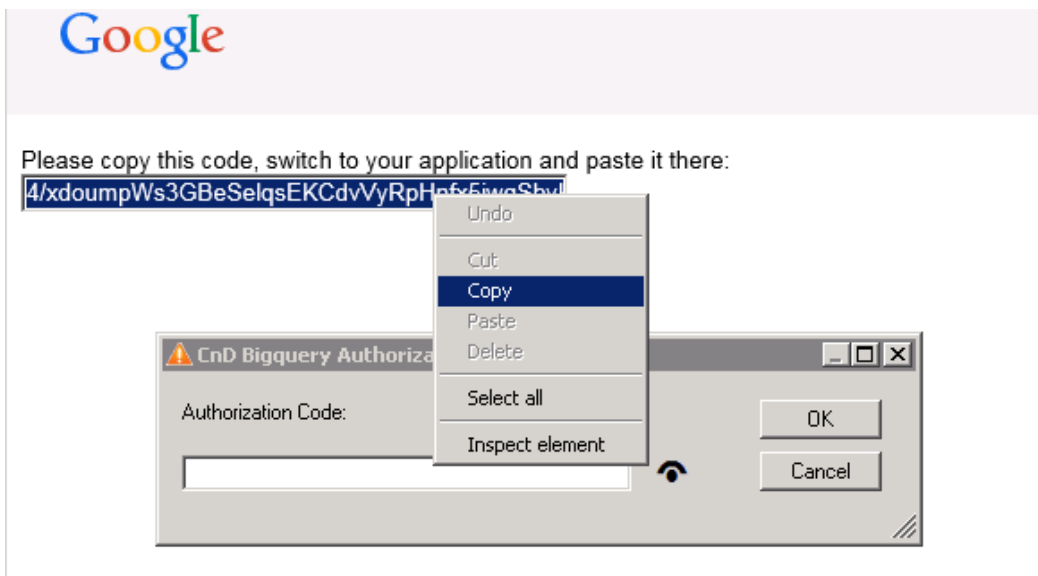
19. Connect to your **Google Account**:



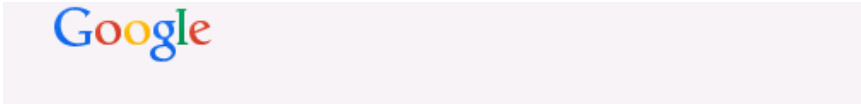
20. After a while this screen appears asking you to accept:



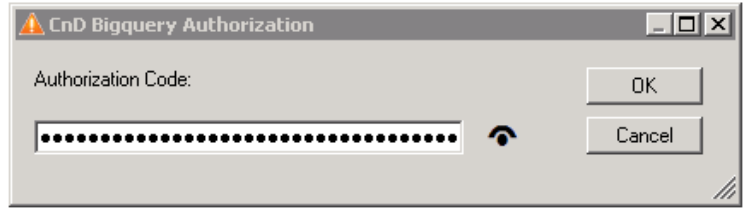
21. Click **Accept**> A box appears with a code and ask you to copy this code



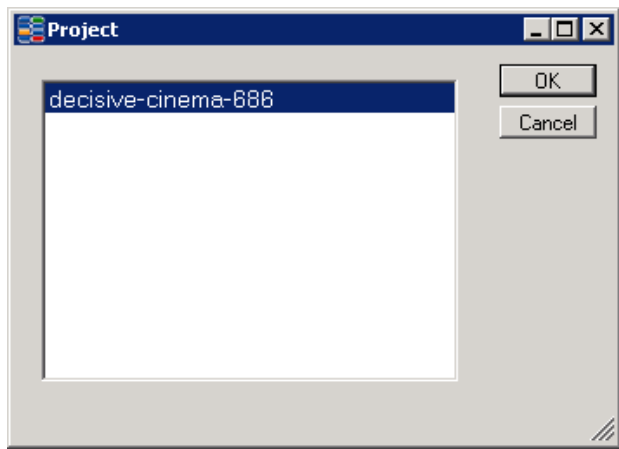
Make a right mouse click and select **Copy**: the code is copied in the CnD BigQuery Authorization box:



Please copy this code, switch to your application and paste it there:
`4/2muBcls5wqqgdbmKcITPtGxj9nisMfrGTCIIY2B4`

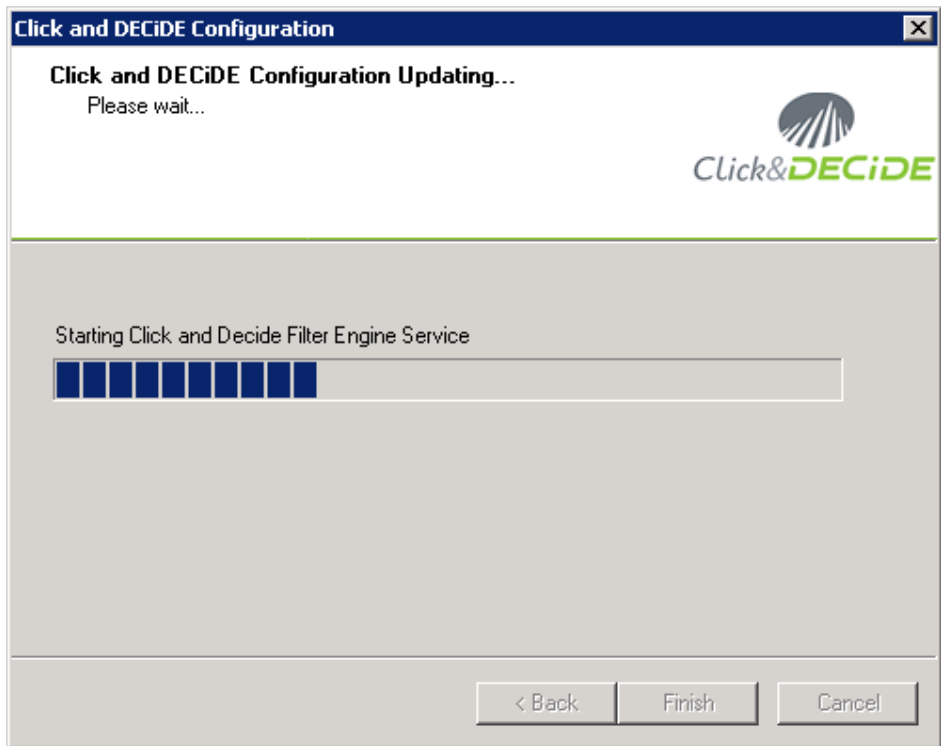


22. Click **OK**. After a while a windows ask you to select a Project:



23. Select a **Project** and click **OK**.

24. The Configuration Wizard continues until the end.



25. The ReadMe file will be displayed if you click the “Click here” button



26. Click **Finish** to exit the configuration.

© 2010-2018 Click&DECiDE SAS. All rights reserved Click&DECiDE, Net Report, DataSet Report, DataSet Vision, and other DataSet products and services as well as their respective logos are trademarks or registered trademarks of Click&DECiDE SAS. All other company names, products and services used herein are trademarks or registered trademarks of their respective owners. The information published herein is subject to change without notice. This publication is for informational purposes only, without representation or warranty of any kind, and Click&DECiDE SAS shall not be liable for errors or omissions with respect to this publication. The only warranties for Click&DECiDE products and services are those that are set forth in the express warranty statements accompanying such products and services, if any. Nothing herein should be construed as constituting any additional warranty.