

Knowledge Base Article: Article 241

How to parameterize IIS 8 on Windows 2012 Server for Click&DECiDE?

Date: May, 12th, 2014

Problem:

It is necessary to configure **IIS 8** in **Windows 2012 Server** for Click&DECiDE before installing Click&DECiDE.

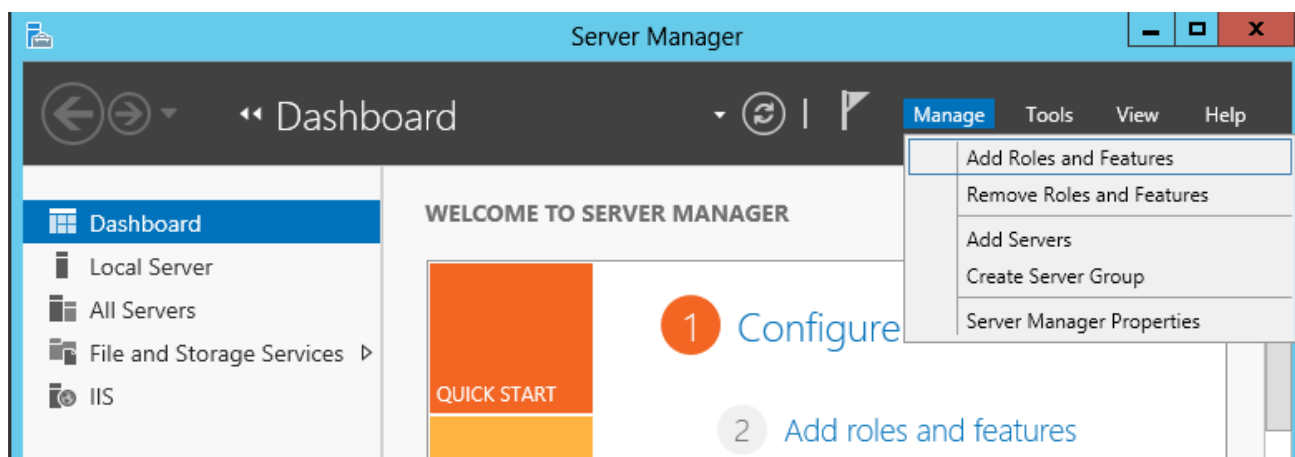
Warning: This KBA also applies to IIS 8 under **Windows 8 PRO** or Window 8 Enterprise Edition. (Note that Windows 8 Standard does not provide the Windows Authentication Mode in the basic version of IIS).

Solution:

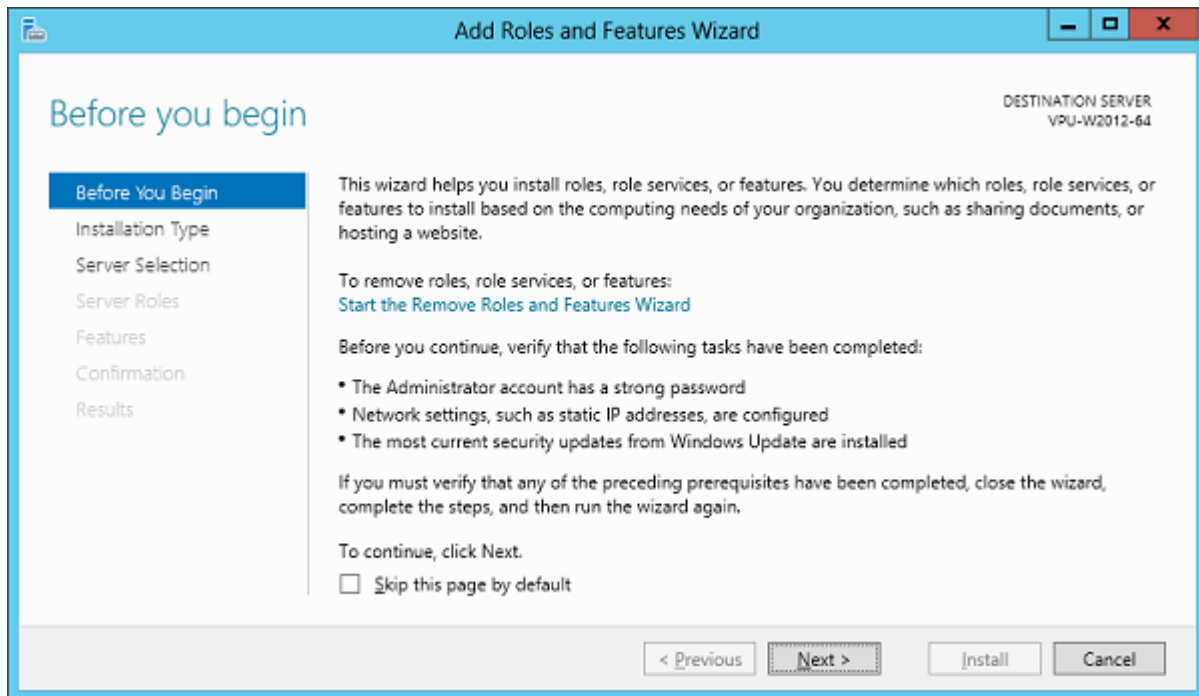
Before installing Click&DECiDE software, please check the IIS 8 configuration, to do so please follow the steps below:

Steps

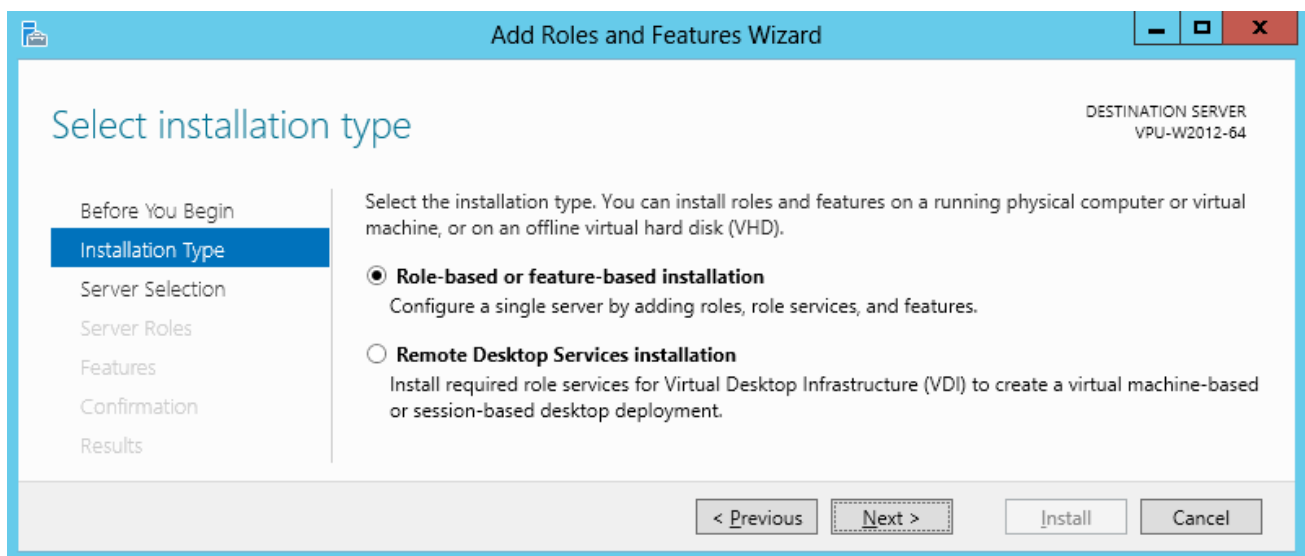
1. Open **Server Manager**.
2. Under **Manage** menu, select **Add Roles and Features**



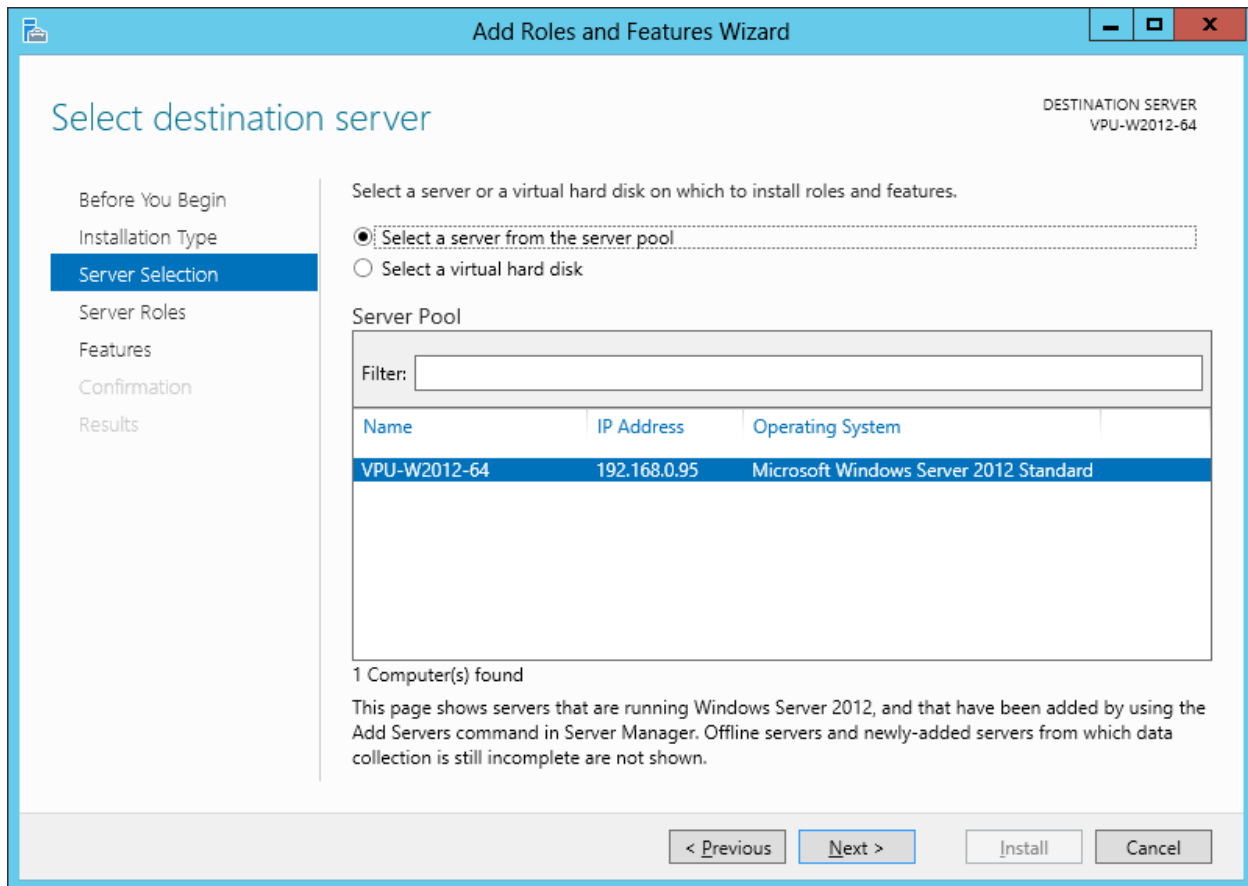
3. Click **Next**:



4. Click **Next**:

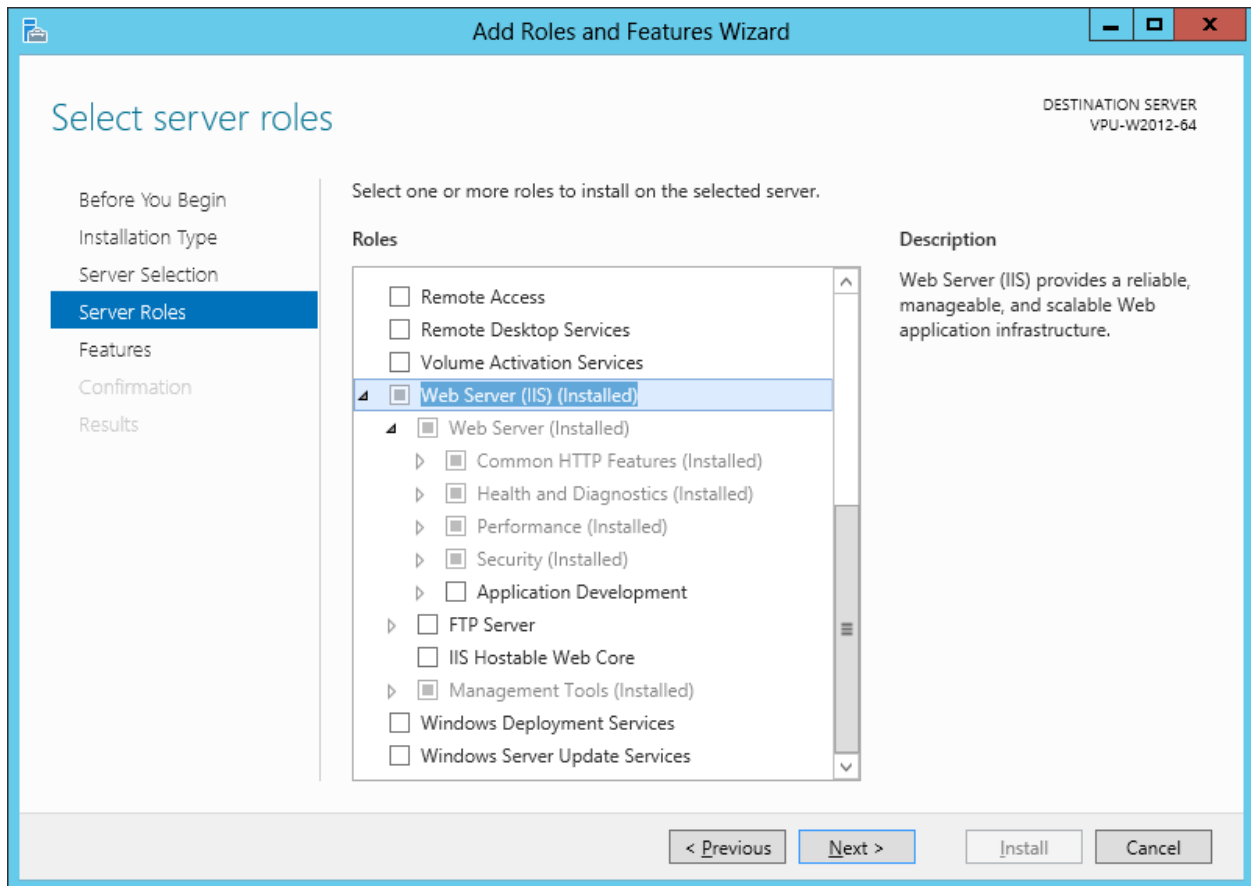


5. Click **Next**:



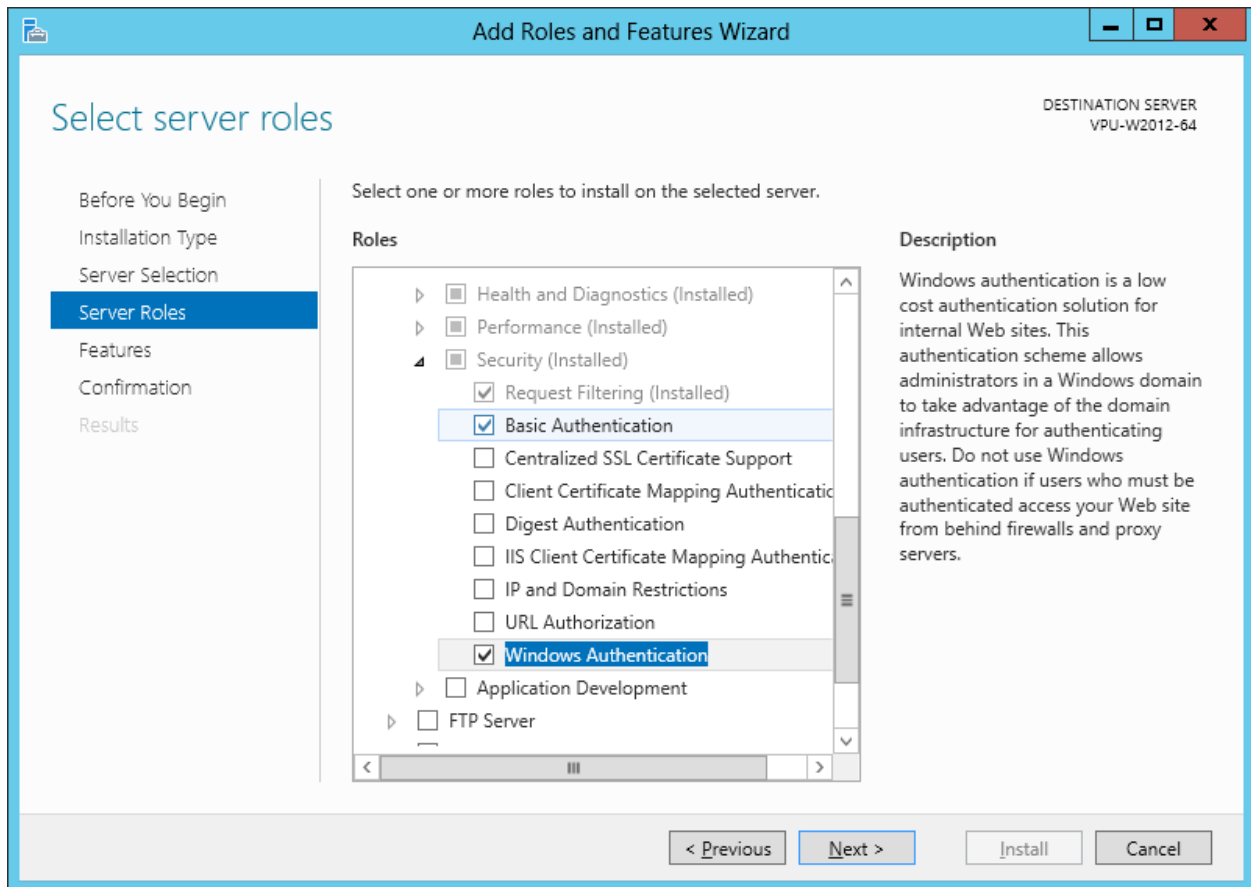
6. The default following role services are proposed by default when installing IIS:

- **Common HTTP Features**
 - Static Content
 - Default Document
 - Directory Browsing
 - HTTP Errors
- **Health and Diagnostics**
 - HTTP Logging
- **Performance**
 - Static Content Compression
- **Security**
 - Request Filtering
- **Application Development**
 - Nothing by default
- **Management Tools**
 - IIS Management Console



7. Enable the following options in **Security**:

- **Basic Authentication**
- **Windows Authentication**



Warning: if you are using “**Windows 8 Standard**”, note that the basic IIS you can install does not provide the **Windows Authentication**. If you wish to have the Windows Authentication, you will need first to upgrade to “**Windows 8 PRO**”.

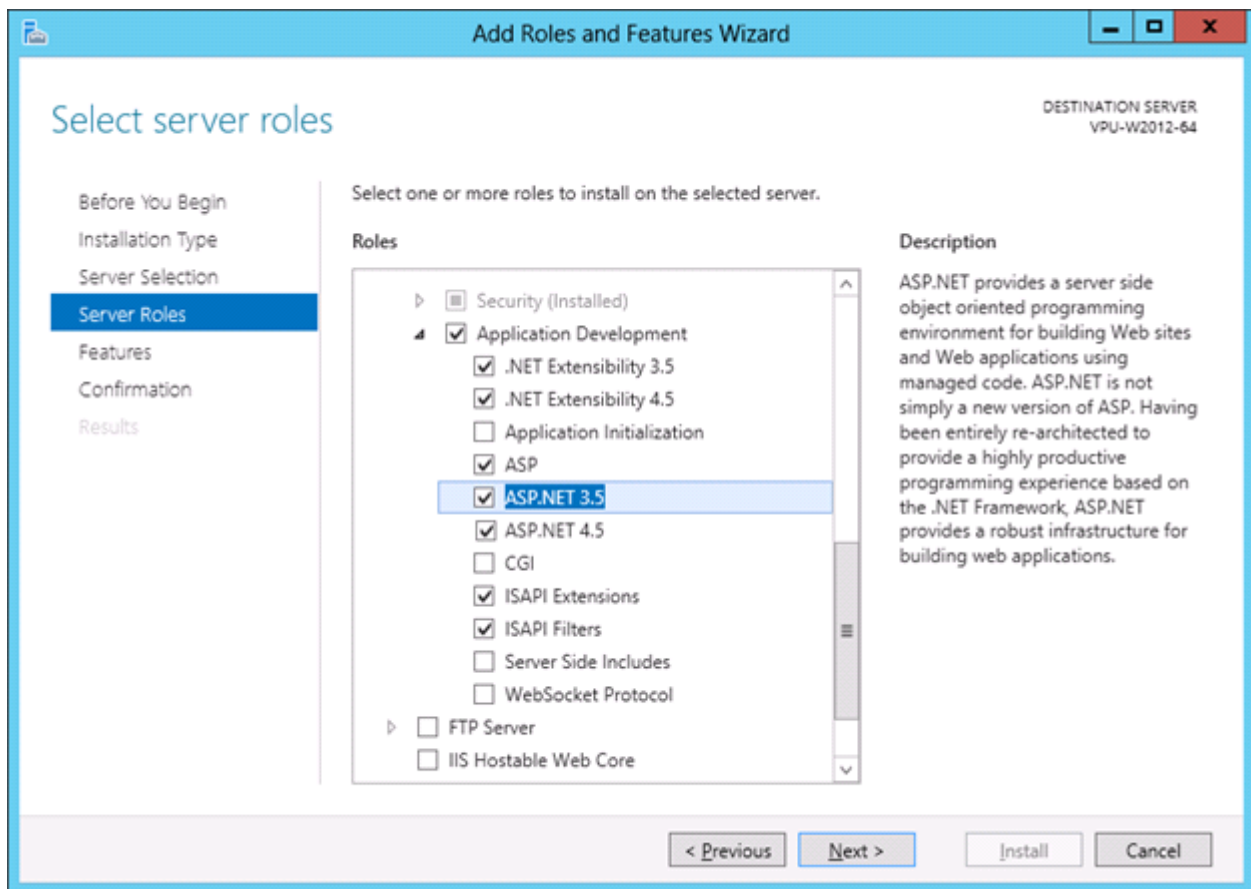
Click **Next**

8. Enable the following options in **Application Development**:

- **ASP.NET 3.5** - this will automatically select:
 - **.NET extensibility 3.5**
 - **ISAPI extensions**
 - **ISAPI filter**

- **ASP** – needed only with Click&DECiDE **NSI** for the Flat File Agent Status.

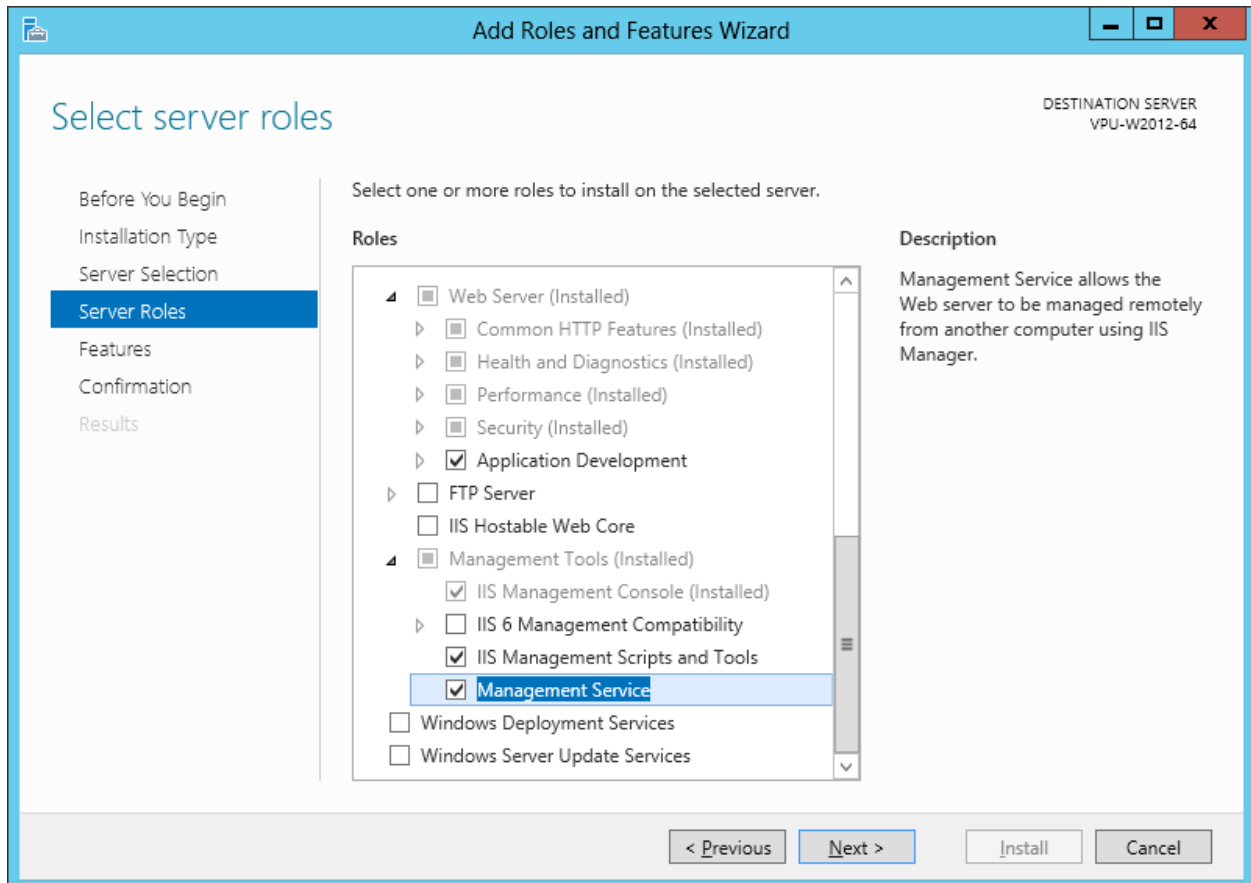
- **ASP.NET 4.5** - this will automatically select:
 - **.NET extensibility 4.5**



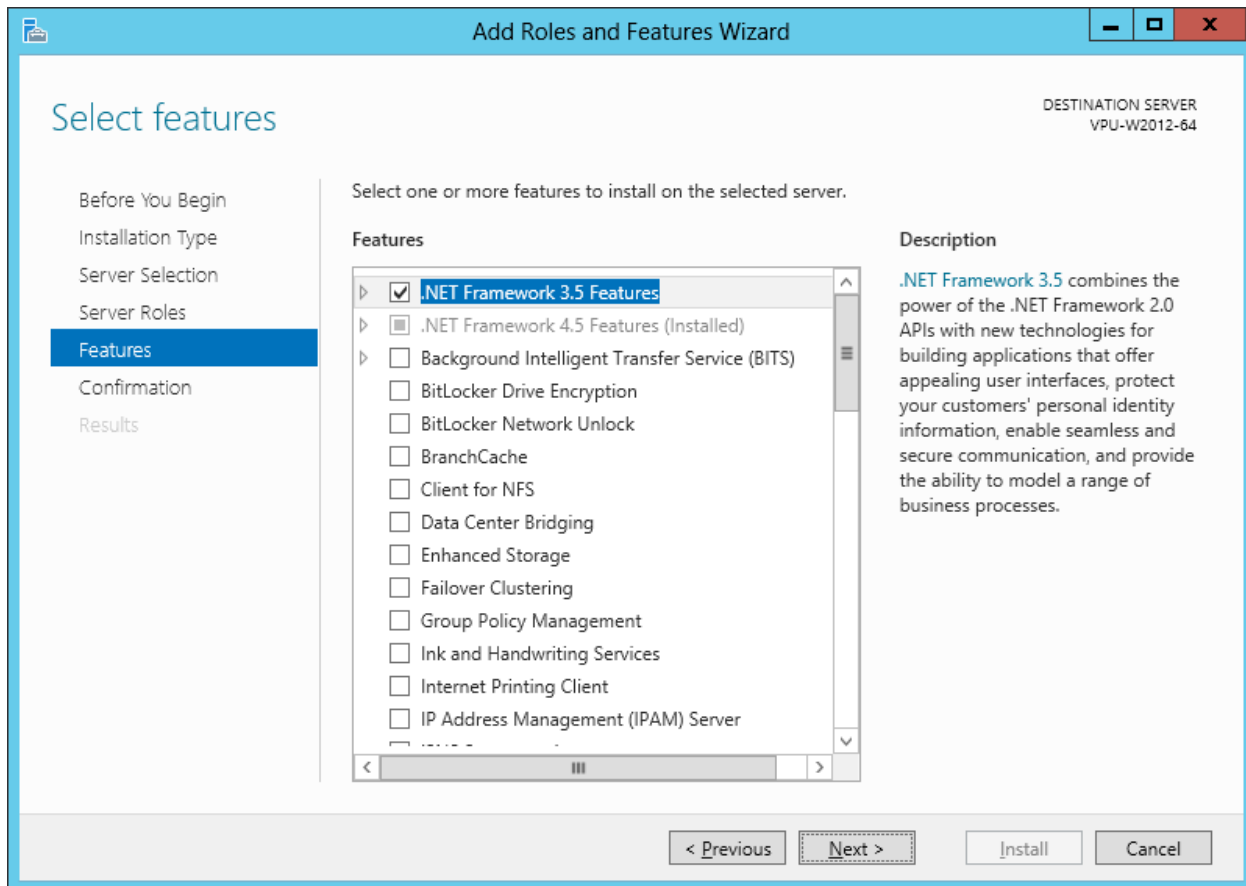
Click **Next**

9. Enable the following options in **Management Tools**:

- **IIS Management Scripts & Tools**
- **Management Service**

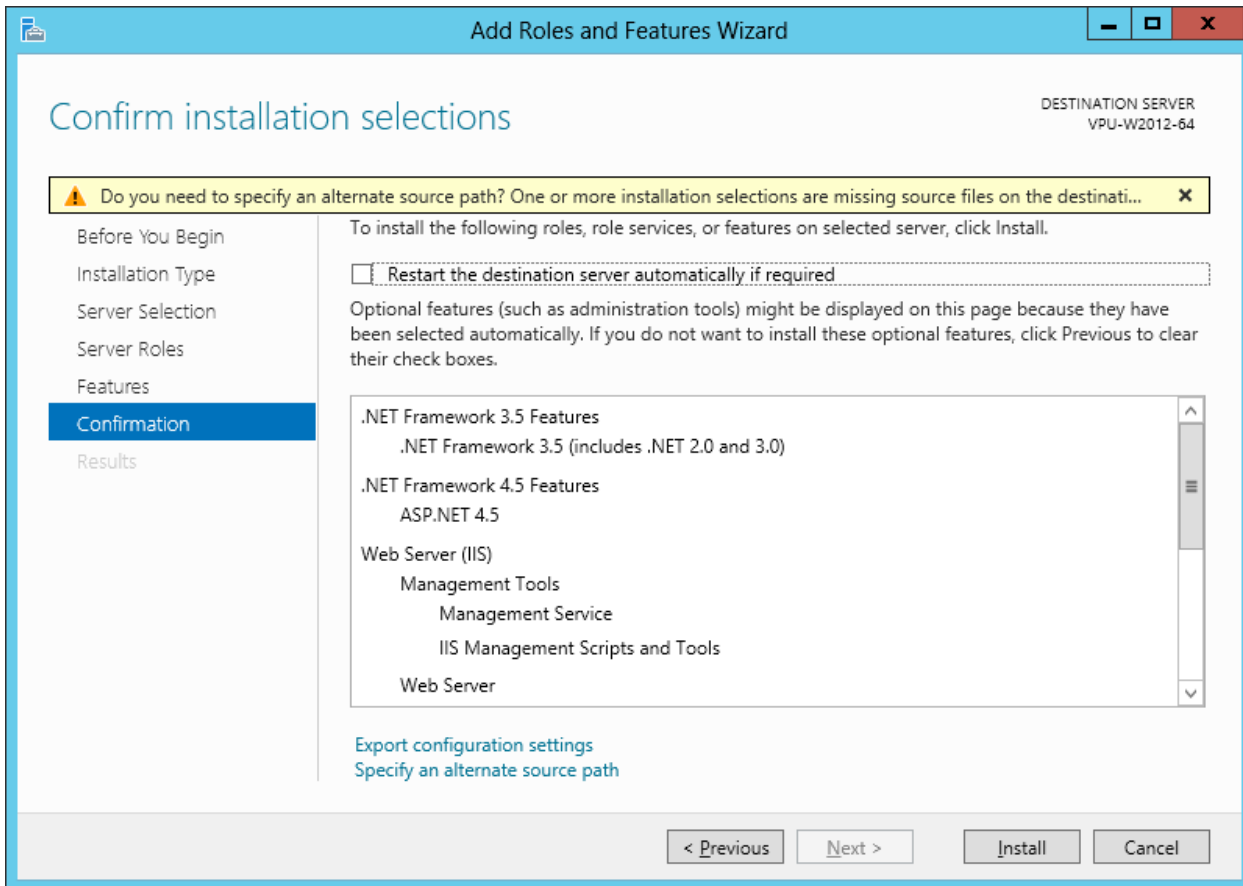


Click **Next**

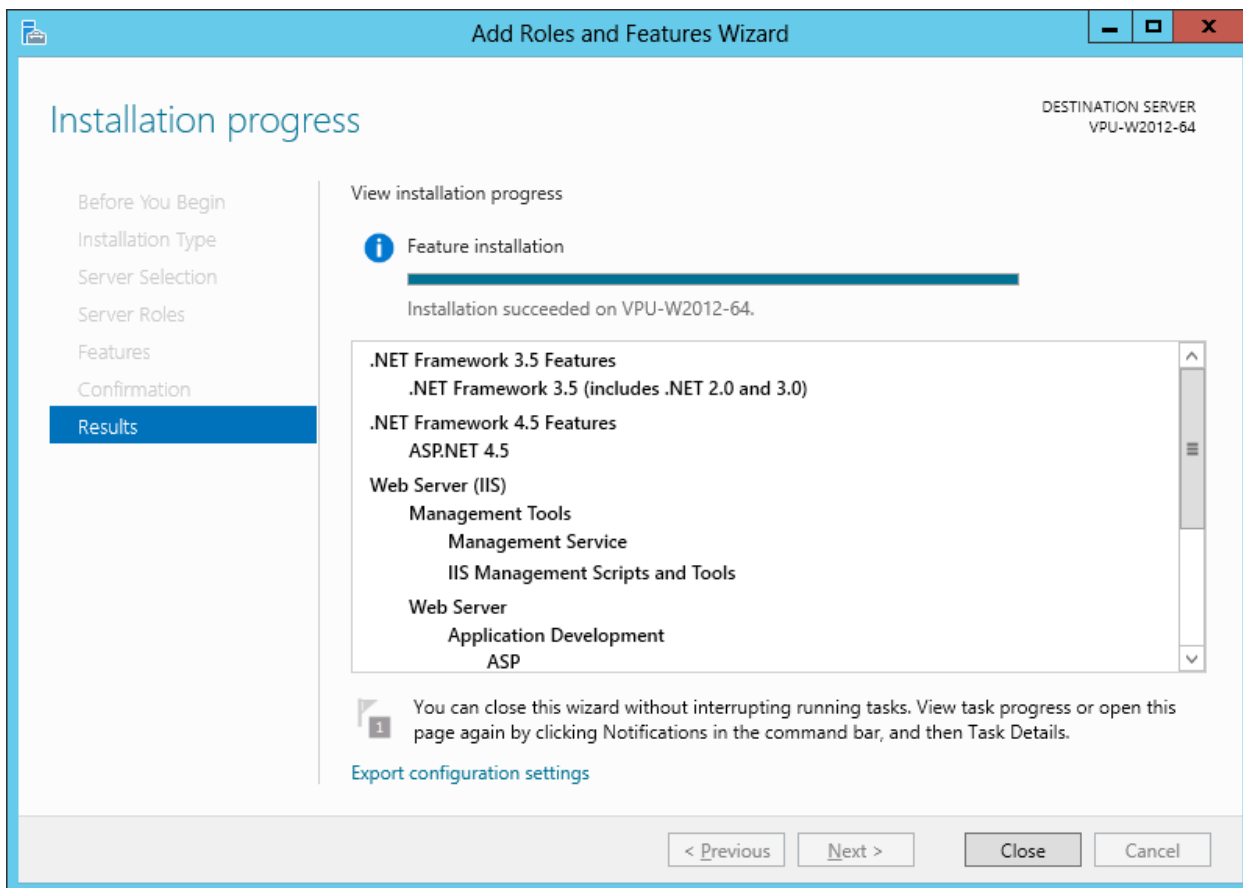
10. Click **Next**:




11. Click Install:



12. Click **Close** once installation is done.



13. Install now Click&DECiDE. The Click and DECiDE setup will check if the Microsoft .NET Framework 3.5 and SQL Server are installed.

14. Click **Install** to install the Microsoft .NET Framework 3.5 and SQL Server 2005, if they have not been previously installed. Warning: the Microsoft .NET Framework 3.5 must be installed after IIS.

15. If the Microsoft .NET Framework was installed before IIS you can follow the steps below to enable the Microsoft .NET Framework in IIS:

- i. Start **Windows PowerShell**
- ii. Go to the following directory where the Microsoft framework was installed:
C:\Windows\Microsoft.NET\Framework\v2.0.50727 (by default).
- iii. Run the following command: `aspnet_regiis -i`

16. Continue with the installation of Click&DECiDE.



17. Checking the list of the IIS 8 Installed Features:
open **Server Manager**, then select **IIS** in the left list and go down to the **Roles and Features** block:

ROLES AND FEATURES
All roles and features | 27 total

Server Name	Name	Type	Path
VPU-W2012-64	Web Server (IIS)	Role	Web Server (IIS)
VPU-W2012-64	Basic Authentication	Role Service	Web Server (IIS)\Web Server\Security\Basic Authentication
VPU-W2012-64	Security	Role Service	Web Server (IIS)\Web Server\Security
VPU-W2012-64	HTTP Logging	Role Service	Web Server (IIS)\Web Server\Health and Diagnostics\HTTP Logging
VPU-W2012-64	Health and Diagnostics	Role Service	Web Server (IIS)\Web Server\Health and Diagnostics
VPU-W2012-64	ISAPI Filters	Role Service	Web Server (IIS)\Web Server\Application Development\ISAPI Filters
VPU-W2012-64	ISAPI Extensions	Role Service	Web Server (IIS)\Web Server\Application Development\ISAPI Extensions
VPU-W2012-64	ASP	Role Service	Web Server (IIS)\Web Server\Application Development\ASP
VPU-W2012-64	.NET Extensibility 3.5	Role Service	Web Server (IIS)\Web Server\Application Development\.NET Extensibility 3.5
VPU-W2012-64	ASP.NET 3.5	Role Service	Web Server (IIS)\Web Server\Application Development\ASP.NET 3.5
VPU-W2012-64	.NET Extensibility 4.5	Role Service	Web Server (IIS)\Web Server\Application Development\.NET Extensibility 4.5
VPU-W2012-64	ASP.NET 4.5	Role Service	Web Server (IIS)\Web Server\Application Development\ASP.NET 4.5
VPU-W2012-64	Windows Authentication	Role Service	Web Server (IIS)\Web Server\Security\Windows Authentication
VPU-W2012-64	Application Development	Role Service	Web Server (IIS)\Web Server\Application Development
VPU-W2012-64	Directory Browsing	Role Service	Web Server (IIS)\Web Server\Common HTTP Features\Directory Browsing
VPU-W2012-64	Default Document	Role Service	Web Server (IIS)\Web Server\Common HTTP Features\Default Document
VPU-W2012-64	Static Content	Role Service	Web Server (IIS)\Web Server\Common HTTP Features\Static Content
VPU-W2012-64	Common HTTP Features	Role Service	Web Server (IIS)\Web Server\Common HTTP Features
VPU-W2012-64	Static Content Compression	Role Service	Web Server (IIS)\Web Server\Performance\Static Content Compression
VPU-W2012-64	Performance	Role Service	Web Server (IIS)\Web Server\Performance
VPU-W2012-64	Web Server	Role Service	Web Server (IIS)\Web Server
VPU-W2012-64	Management Service	Role Service	Web Server (IIS)\Management Tools\Management Service
VPU-W2012-64	IIS Management Scripts and Tools	Role Service	Web Server (IIS)\Management Tools\IIS Management Scripts and Tools
VPU-W2012-64	IIS Management Console	Role Service	Web Server (IIS)\Management Tools\IIS Management Console
VPU-W2012-64	Management Tools	Role Service	Web Server (IIS)\Management Tools
VPU-W2012-64	HTTP Errors	Role Service	Web Server (IIS)\Web Server\Common HTTP Features\HTTP Errors
VPU-W2012-64	Request Filtering	Role Service	Web Server (IIS)\Web Server\Security\Request Filtering

Annotations:

- Default Role Services installed when installing IIS:** Web Server (IIS), Security, HTTP Logging, Health and Diagnostics, ISAPI Filters, ISAPI Extensions, ASP, .NET Extensibility 3.5, ASP.NET 3.5, .NET Extensibility 4.5, ASP.NET 4.5, Windows Authentication, Application Development, Directory Browsing, Default Document, Static Content, Common HTTP Features, Static Content Compression, Performance, Web Server.
- Role Services to be added before installing Click&DECiDE BAI or NSI:** Basic Authentication, ISAPI Filters, ISAPI Extensions, ASP, .NET Extensibility 3.5, ASP.NET 3.5, .NET Extensibility 4.5, ASP.NET 4.5, Windows Authentication, IIS Management Scripts and Tools, IIS Management Console, Management Tools, HTTP Errors, Request Filtering.
- Role Service to be added only if installing Click&DECiDE NSI:** Management Service.