

Knowledge Base Article: Article 237

How to parameterize IIS on Windows 2003 R2 for Click&DECiDE Enterprise?

Date: July 11th, 2012

Problem:

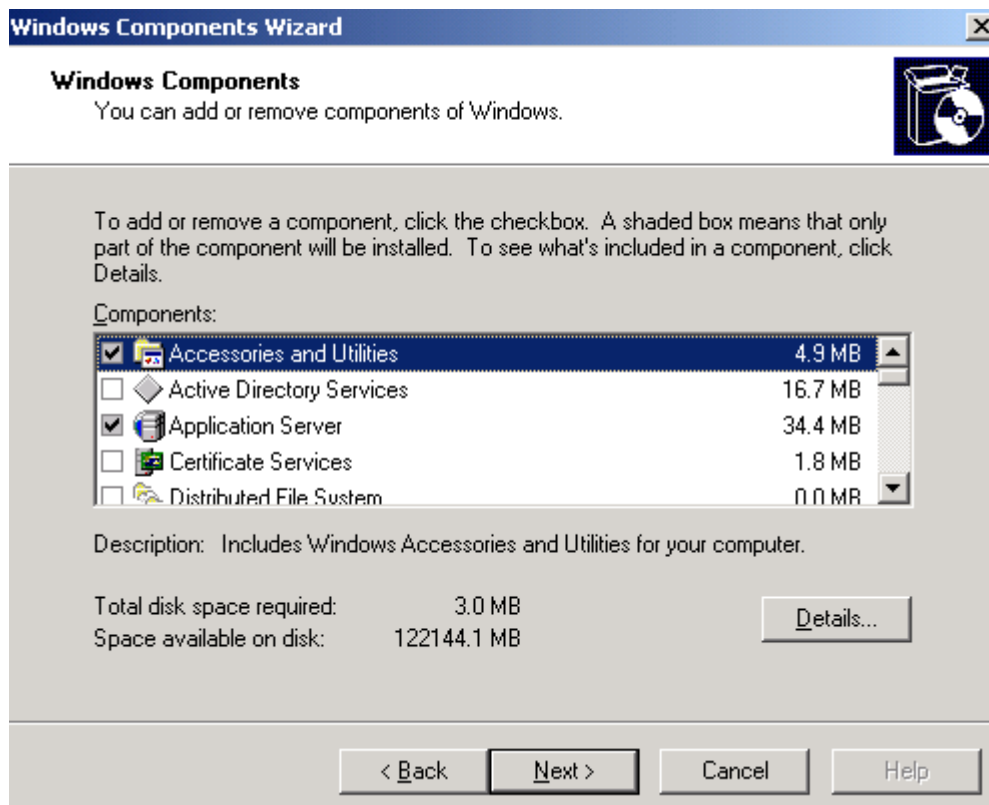
It is necessary to configure IIS Windows 2003 R2 for Click&DECiDE before installing Click&DECiDE Enterprise.

Solution:

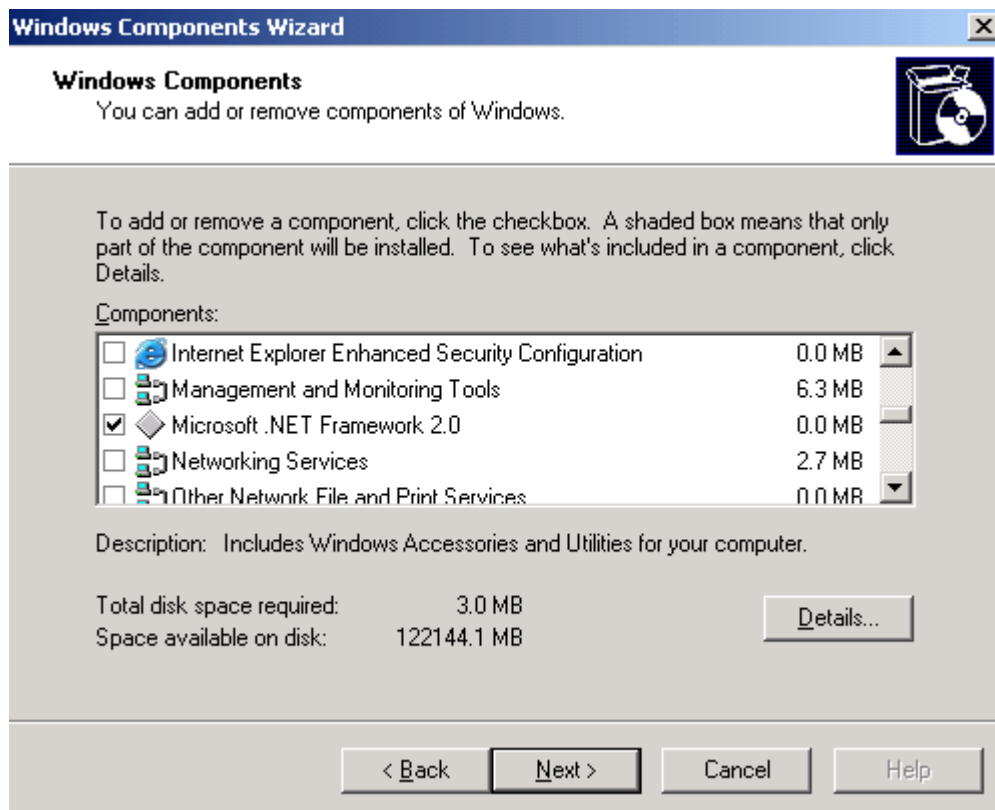
Before installing Click&DECiDE software, please check the IIS configuration, to do so please follow the steps below:

Checking the IIS Installed Components

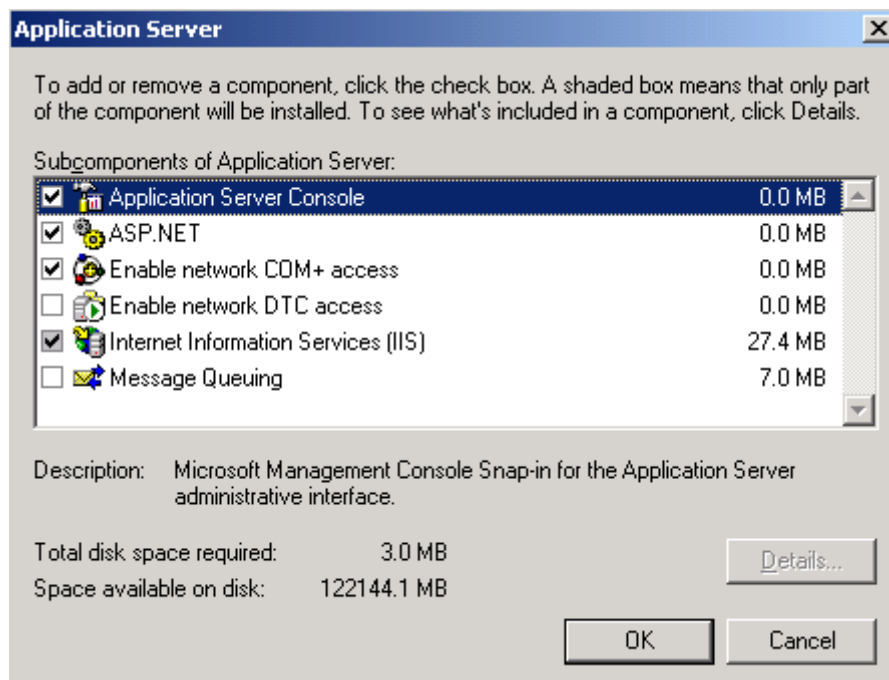
1. Select **Start> Control Panel> Add/Remove Programs**
2. Click **Add/Remove Windows Components**
3. On this screen, check that « **Application Server** » is checked on :



4. : And also that « Microsoft.NET Framework 2.0 » is installed



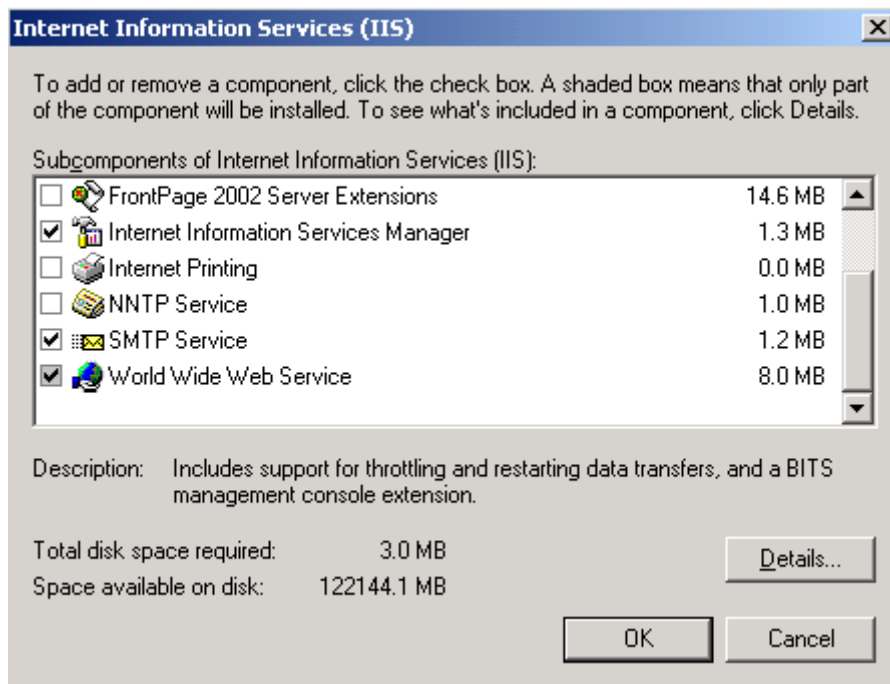
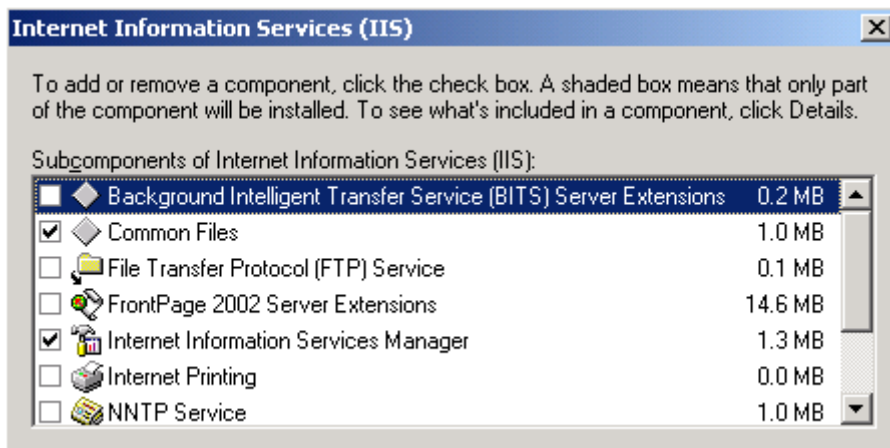
5. In the previous list select « Application Server » and click « Details » :



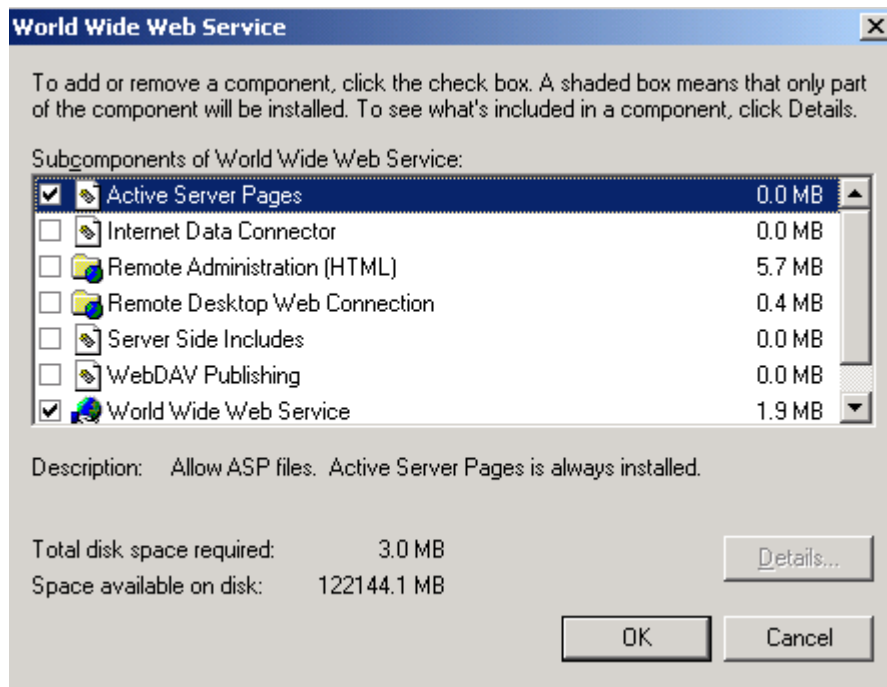
Check in the above list that « Application Server Console » is installed, « ASP.NET » is installed, « Enable network COM + access » is installed and « Internet Information Services (IIS)» is installed.

6. Select now « Internet Information Services (IIS)» and click « Details » :

Check that the following components are installed :



7. Select now « World Wide Web Service » and click « Details » :



Check that ASP 'Active Server Pages and also World Wide Web Service are installed.

8. Install Click&DECiDE Enterprise or eSafe Reporter.

Note:

9. The Click and DECiDE or eSafe Reporter setup will check if the Microsoft .NET Framework 3.5 and SQL Server are installed.

10. Click **Install** to install the Microsoft .NET Framework 3.5 and SQL Server 2005, if they have not been previously installed. Warning: the Microsoft .NET Framework 3.5 must be installed after IIS.

11. If the Microsoft .NET Framework was installed before IIS you can follow the steps below to enable the Microsoft .NET Framework in IIS:

- i. Select **Start> All Programs> Accessories> Command Prompt**.
- ii. Go to the following directory where the Microsoft framework was installed:

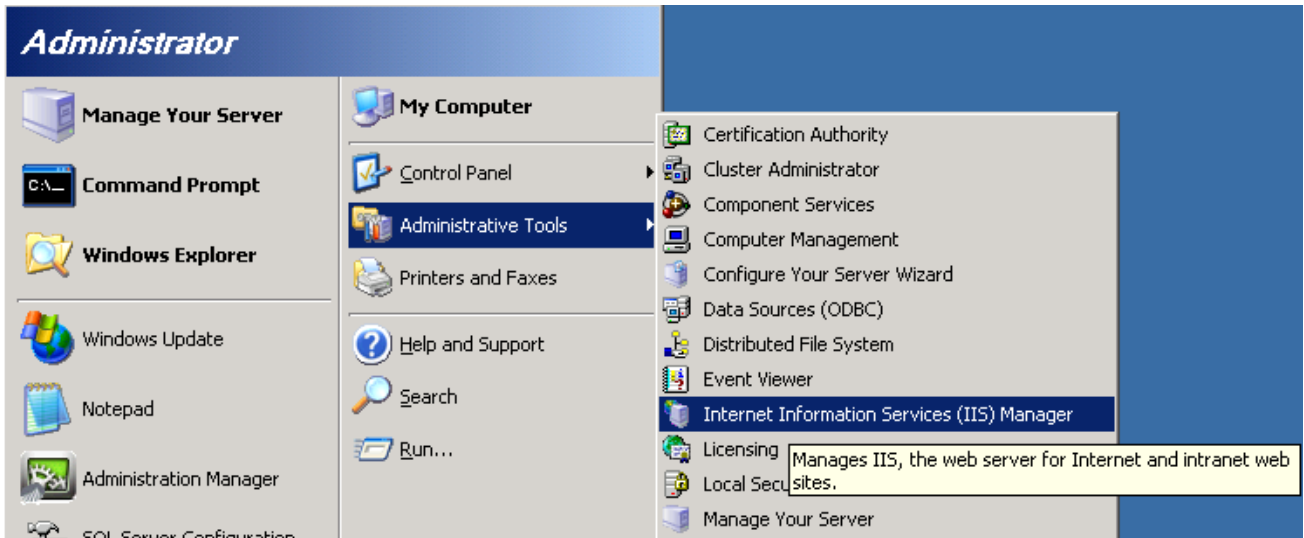
C:\Windows\Microsoft.NET\Framework\v2.0.50727 (by default).
- iii. Run the following command: `aspnet_regiis -i`

12. Continue with the installation of Click&DECiDE or eSafe Reporter.

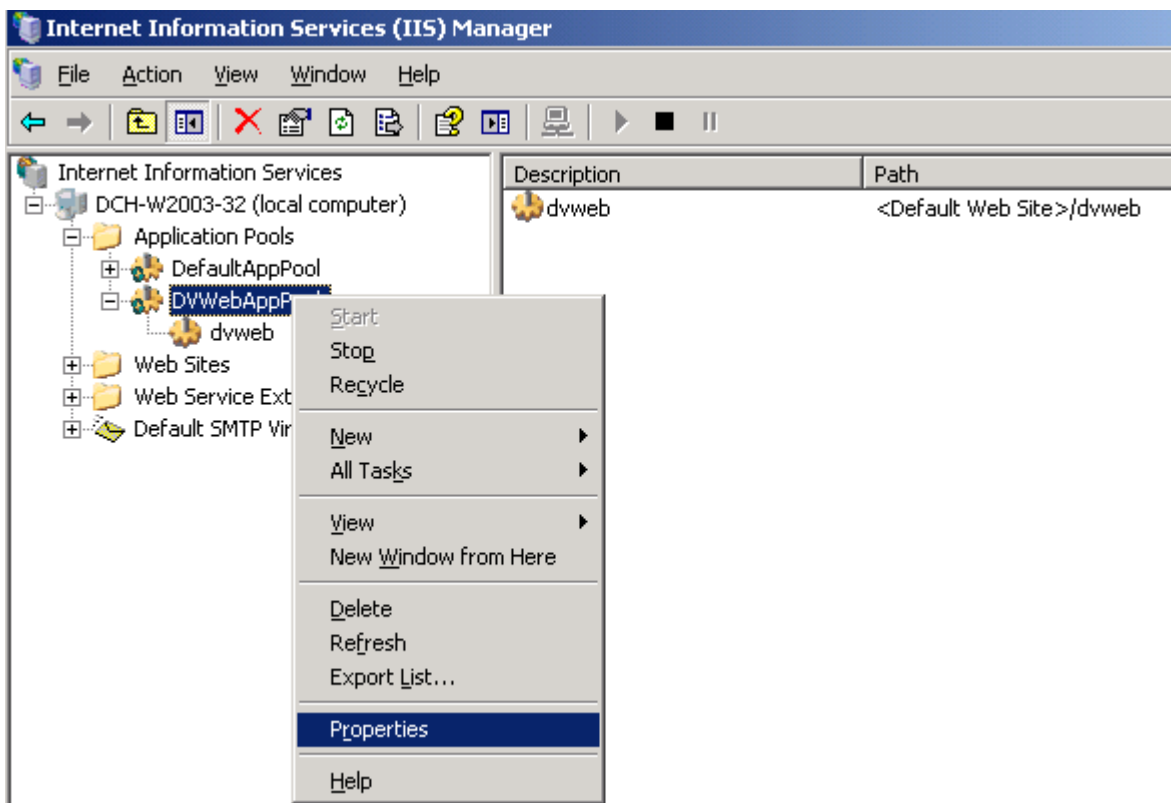
13. Reboot the Server.

Checking the IIS Configuration

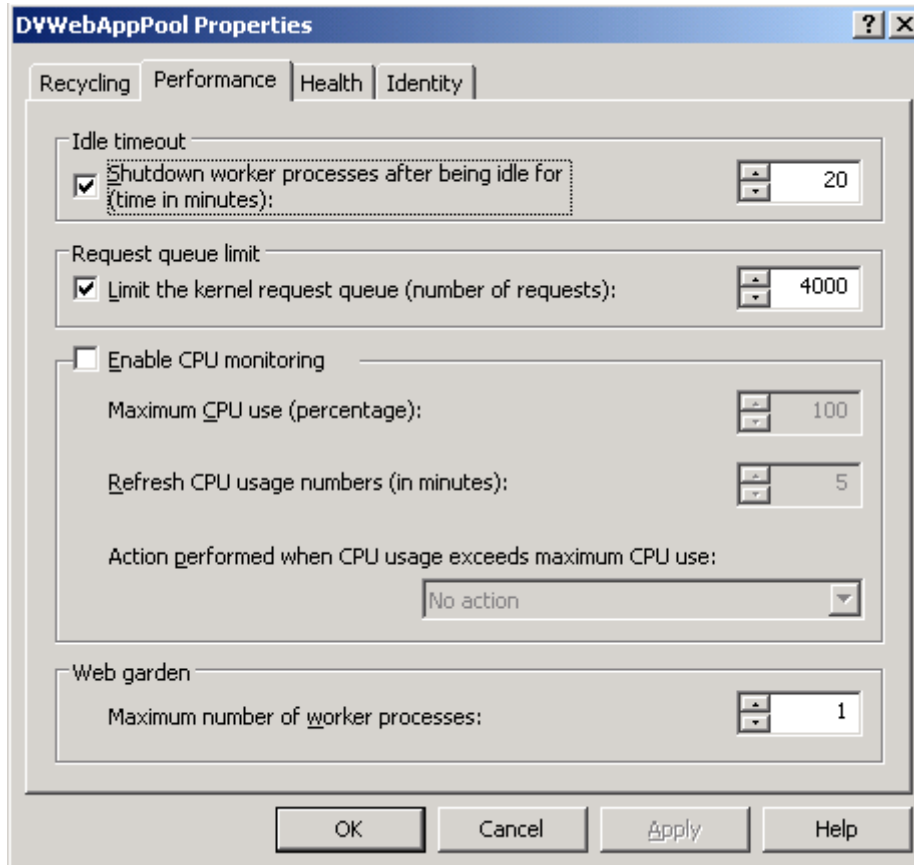
14. Open « Administrative Tools » and « IIS Manager »:



15. Select the Properties for the DVWebAppPool :

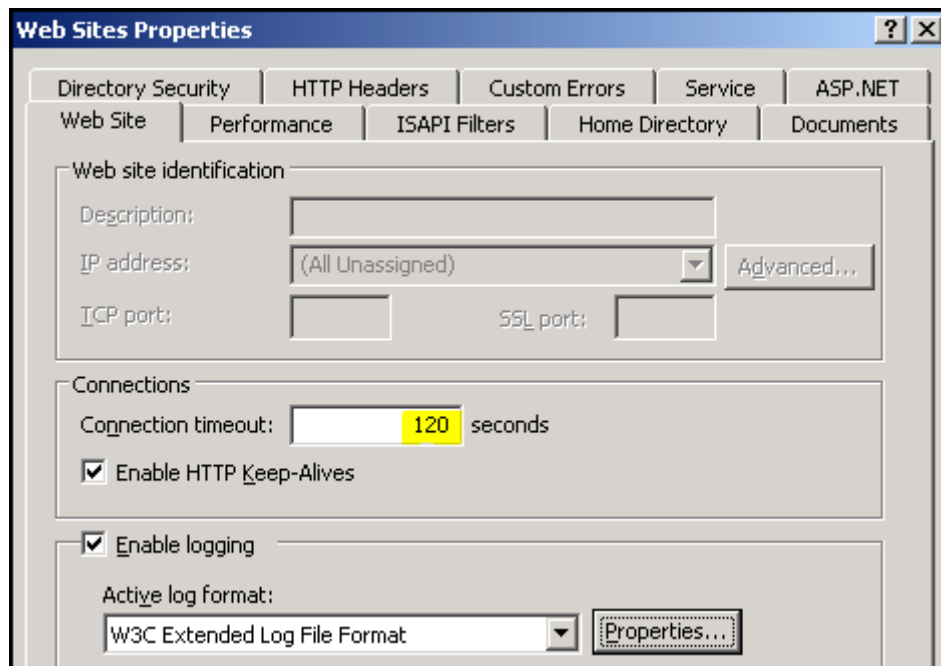


16. Select the Performance Tab :

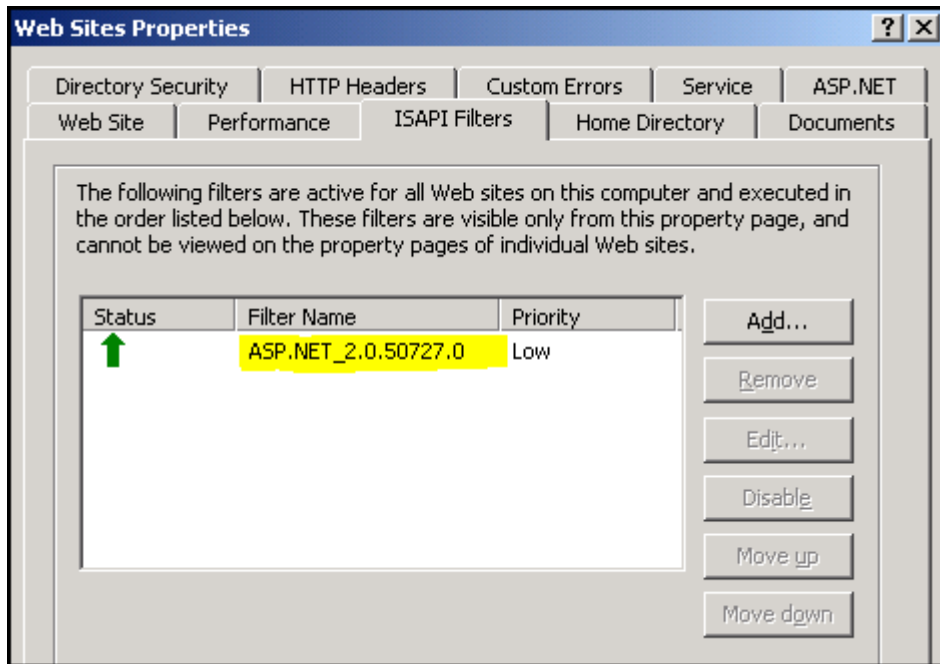


Check that the Idle Timeout is 20 minutes by default and not lower than 10 minutes (the Timelife for a Click&DECiDE Web Portal connected user).

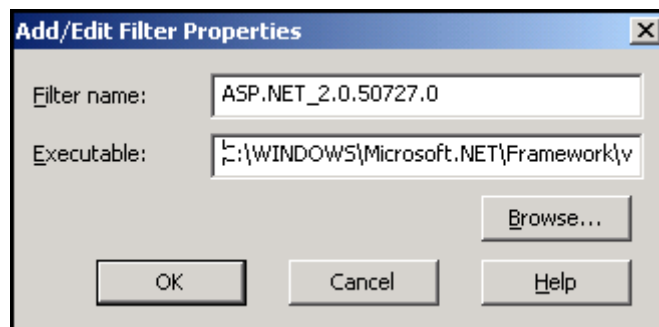
17. Select now the Web Sites branch and make a right mouse click to open the Properties :



18. Select the ISAPI Filters

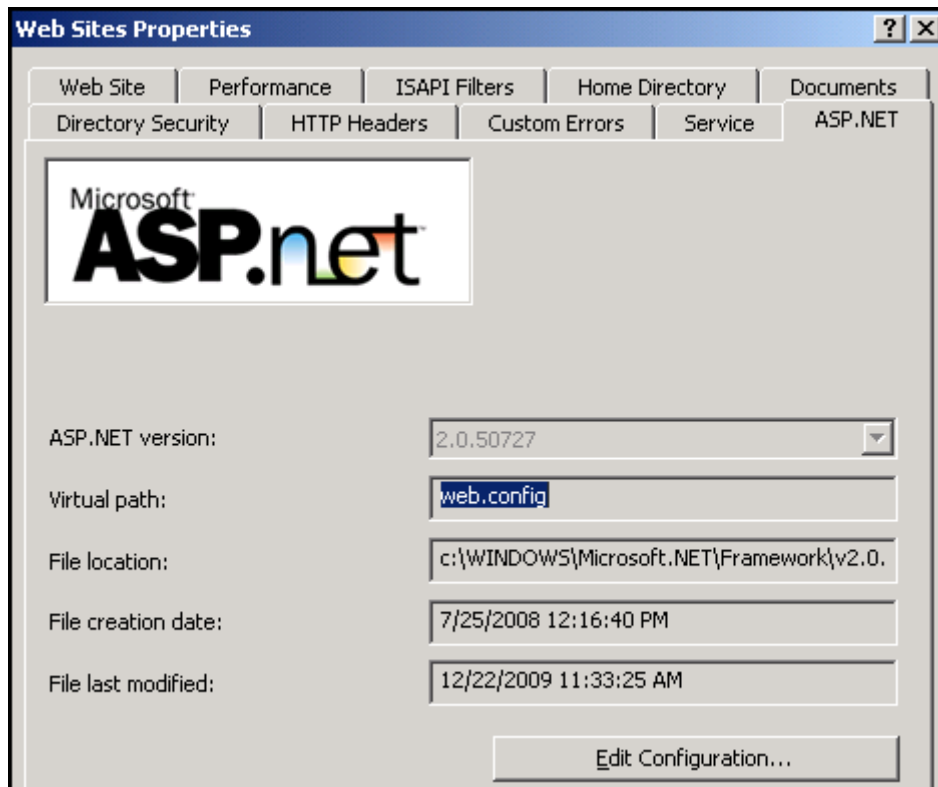


If empty, or containing another version of ASP.NET, click Add and enter as Filter Name : ASP.NET_2.0.50727.0 and click Browse to search for the filter name in:
 c:\windows\Microsoft.net\framework\v2.0.50727\aspnet_filter.dll

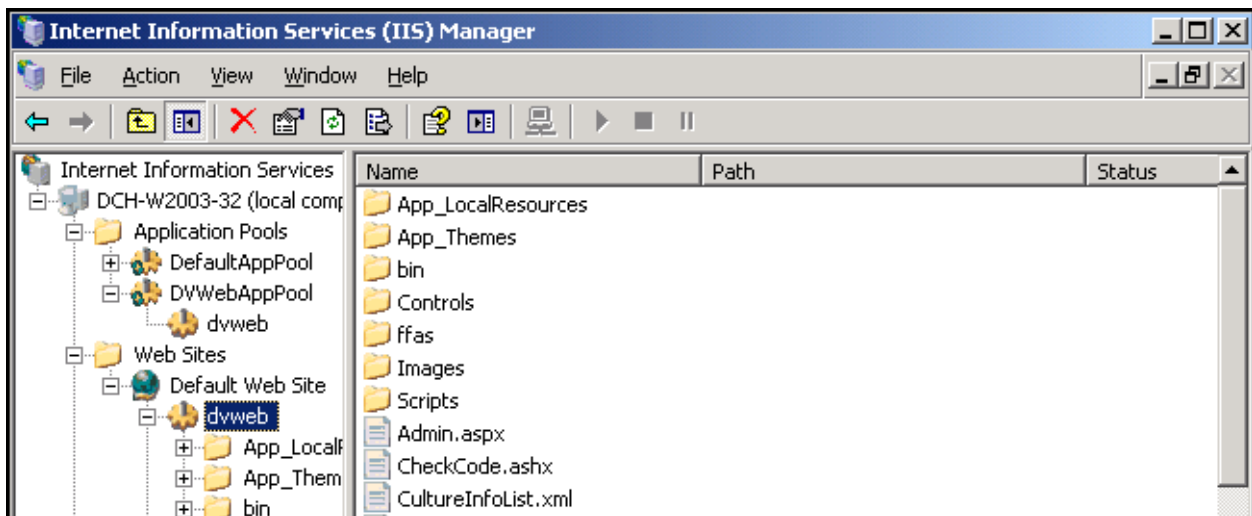


Then click OK.

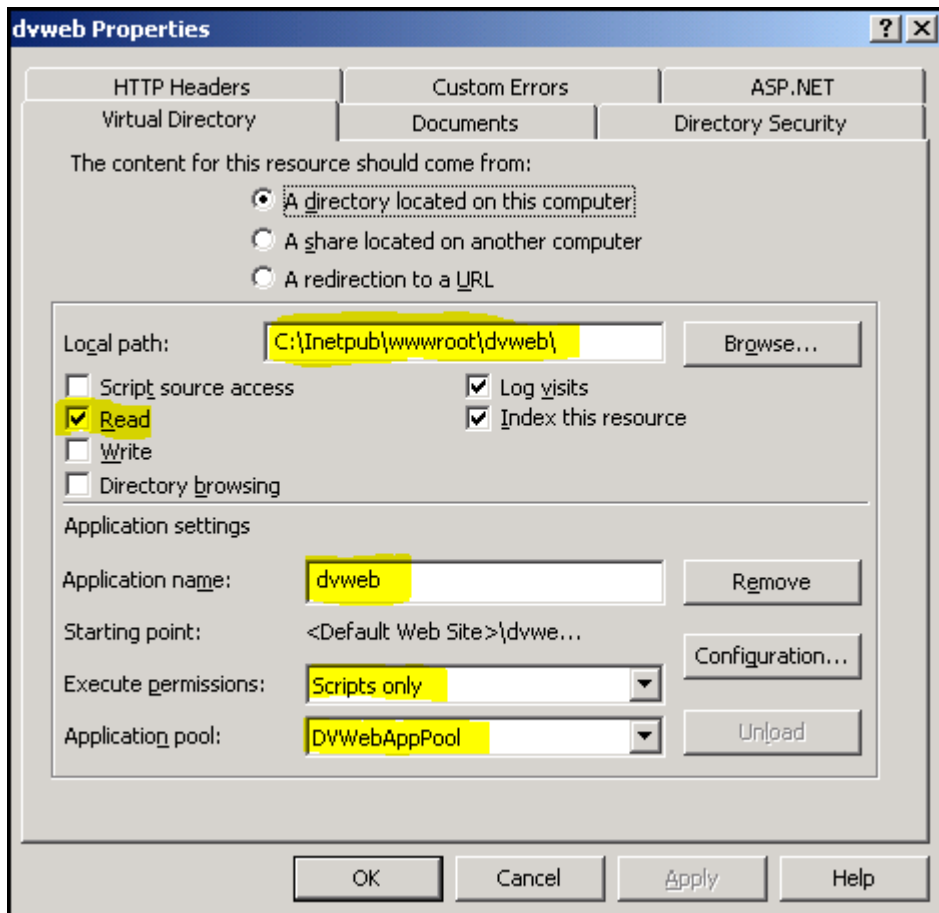
19. Select the ASP.NET Tab : you should see :



20. Select now the **dwweb** level in the Default Web branch:



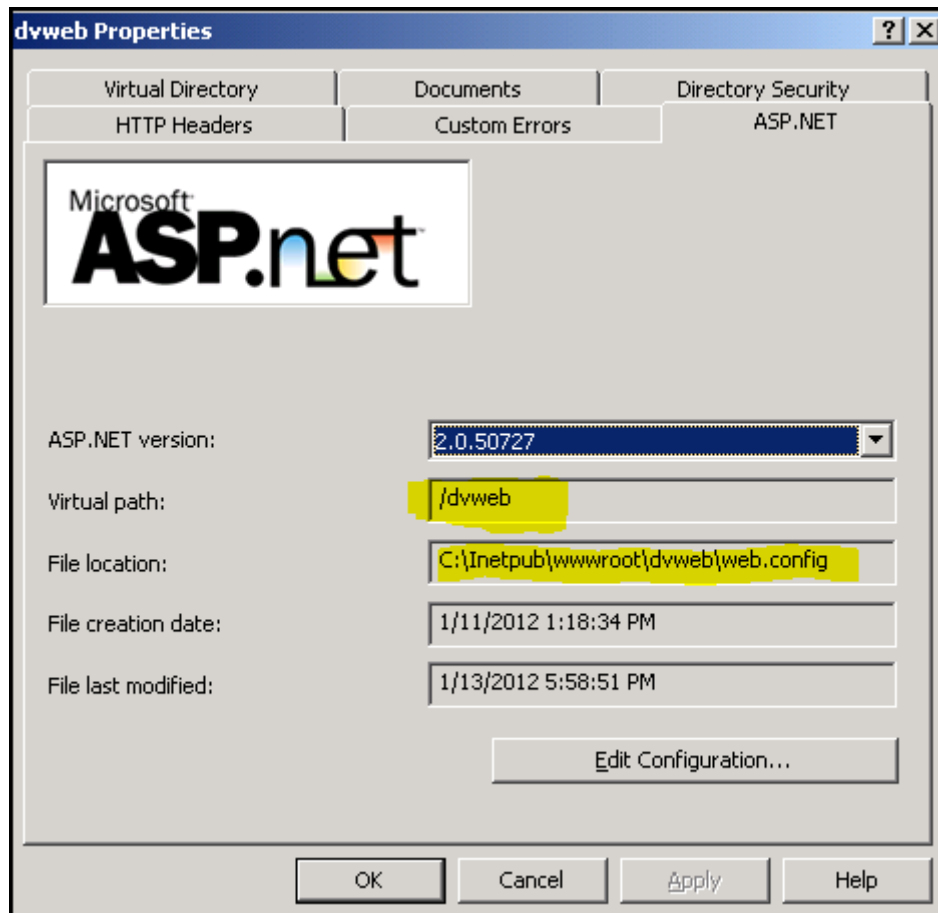
And make a right mouse click to open the Properties :



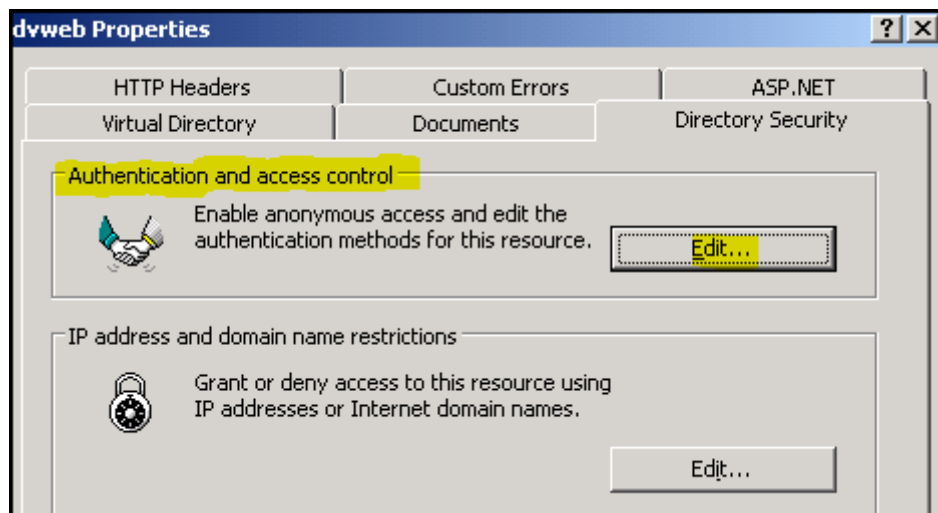
Check the above parameters in yellow.

21. Check in the above dialog box that the ASP.NET Tab appears.

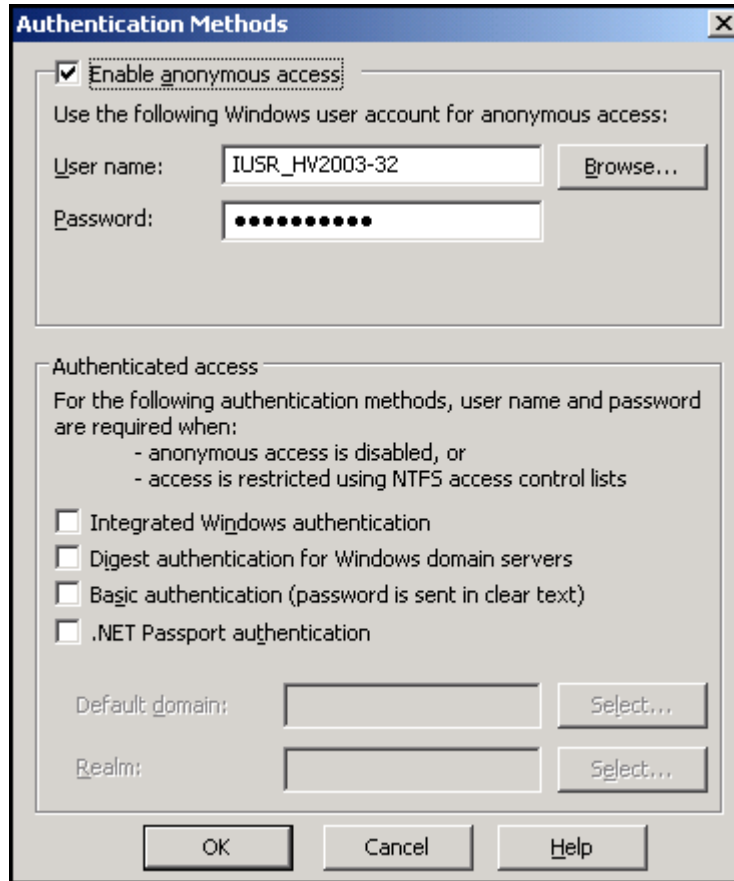
If you select it, you should get the following screen :



22. Select the Directory Security :



And click « Edit » :



Authentication Methods

Enable anonymous access:

Use the following Windows user account for anonymous access:

User name:

Password:

Authenticated access

For the following authentication methods, user name and password are required when:

- anonymous access is disabled, or
- access is restricted using NTFS access control lists

Integrated Windows authentication

Digest authentication for Windows domain servers

Basic authentication (password is sent in clear text)

.NET Passport authentication

Default domain:

Realm:

Note that if you wish to use the **Windows Authentication**, you can activate the option “Integrated Windows authentication” in the above screen. (Not to be used with eSafe Reporter, but use by default with Click&DECiDE Enterprise installed with the Windows Authentication mode).