

Knowledge Base Article: Article 204

How to manage the Excel 2007 or Excel 2010 file with the cube file received by Email for Click&DECiDE version 10.1.2 or greater?

Date: FAQ updated on December 10th, 2011

Problem:

When scheduling a cube to **Excel 2007 Pivot Table** with the **Send Mail** option, the e-mail recipient only receives the file.cub and not the Excel.xlsm file.

Warning:

Up to now, in December 2011, we know that Excel version 64-bit cannot open a file.cub 32-bit. You need an Excel 32-bit version to be able to open a file.cub generated with Click&DECiDE.

Explanation:

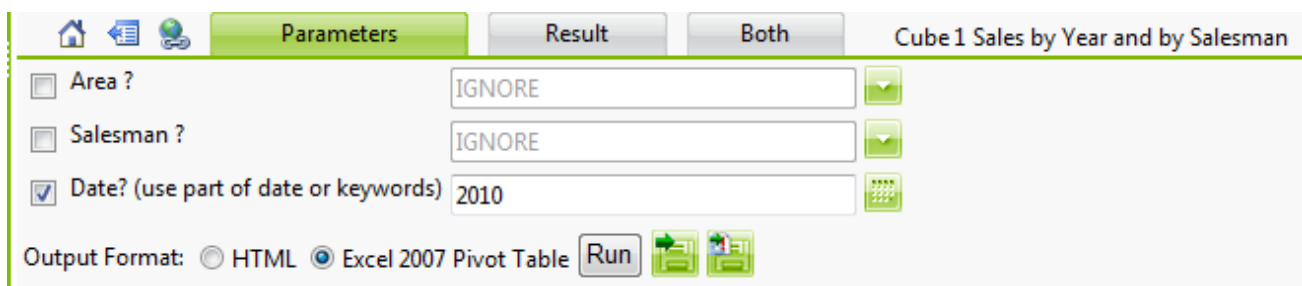
This is not a bug, as sending each time the Excel.xlsm file is not a good solution for the following reasons:

- The Excel.xlsm file does not contain the cube data but only contains the layout (Presentation) and macros.
- The URL (Connection string) inside this Excel.xlsm file has to be changed the first time (See Solution below) to be able to localize the cube data file (file with the .cub extension), so it is not necessary later to send again the same file with a wrong connection string.
- Many mail servers may probably lock the e-mail because of the attached Excel.xlsm extension (containing some macros).

So, we recommend to follow the steps described in the next Solution paragraph:

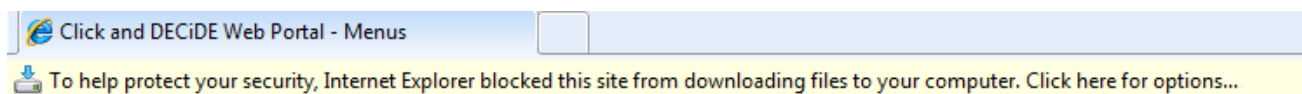
Solution:**Steps**

1. The first time, select the Dynamic Cube through the Click&DECiDE Web Portal and select the **Excel 2007 Pivot Table** output format, then click **Run**. Example:

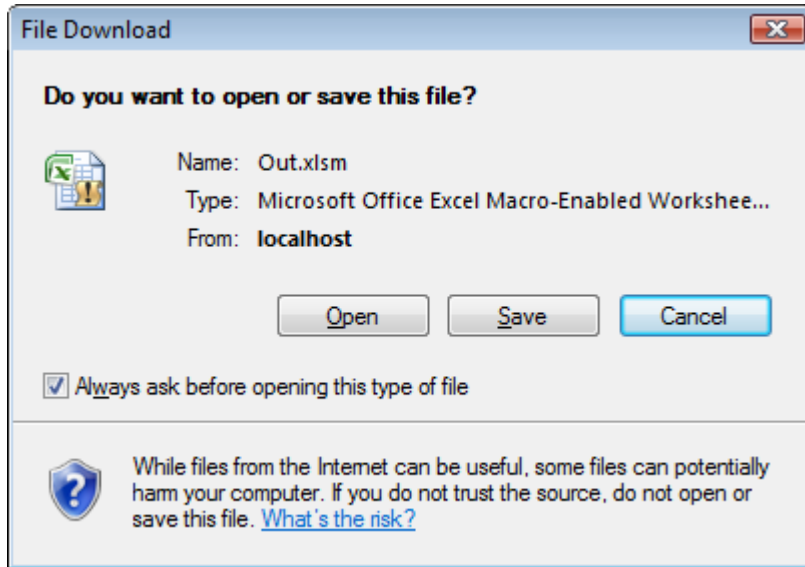


The screenshot shows the 'Parameters' tab of the Click&DECiDE web portal. It features a navigation bar with 'Parameters', 'Result', and 'Both' tabs, and a title 'Cube 1 Sales by Year and by Salesman'. Below the navigation bar, there are three rows of parameters: 'Area?' with a dropdown menu set to 'IGNORE', 'Salesman?' with a dropdown menu set to 'IGNORE', and 'Date? (use part of date or keywords)' with a text input field containing '2010'. At the bottom, there is an 'Output Format' section with radio buttons for 'HTML' and 'Excel 2007 Pivot Table' (which is selected), and a 'Run' button.

2. If you get a warning from your browser about the security, accept this message and click **Download file**, then repeat the step, next time you will get the result file.

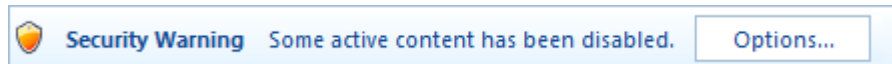


3. Once you get the result in a new Out.xlsm file, click **Save** on the next message:



And save this Excel file under a new name (MyExcel2007Cube.xlsx for example) in the location of your choice, C:\Users\User Name\Documents\ClickAndDECiDE, for example.

- When you receive later the file with the .cub extension containing the data, save it in a location of your choice, example C:\Users\User Name\Documents\ClickAndDECiDE, for example.
- Open the MyExcel2007Cube.xlsx. Warning: according to your Windows version you could have this kind of message because this Excel file contains some macros: Click **Options**

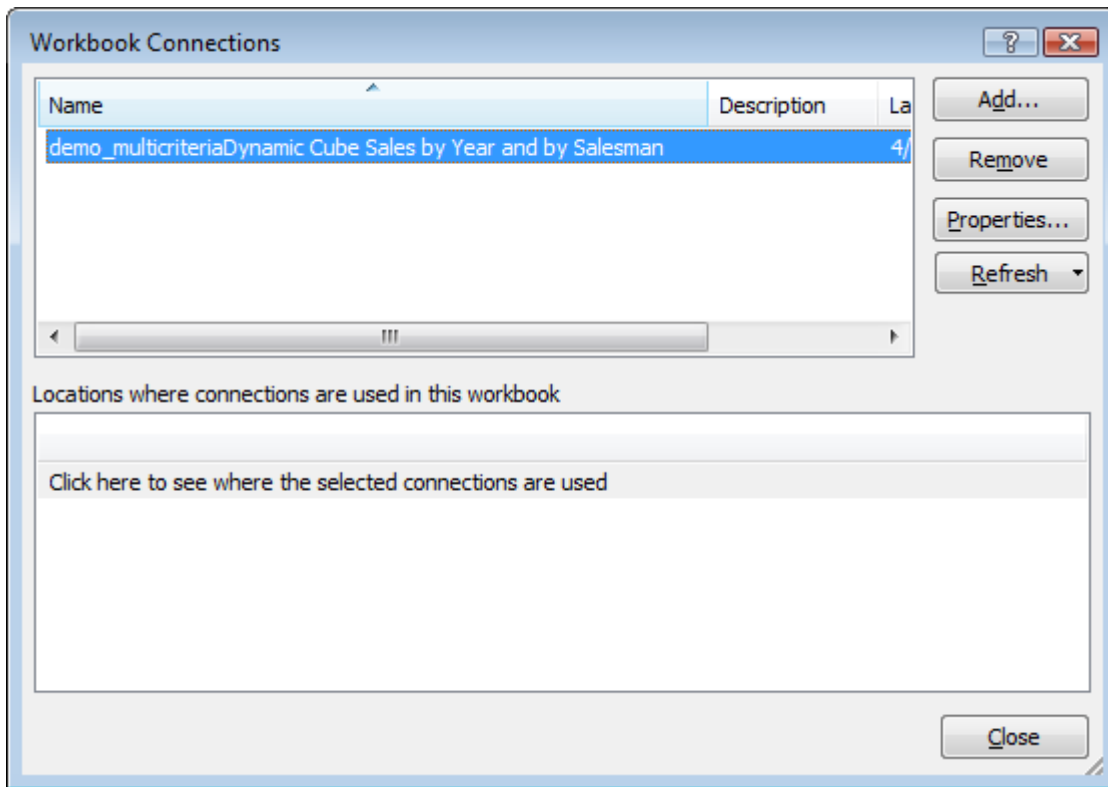


- Then select **Enable this content** and click **OK**

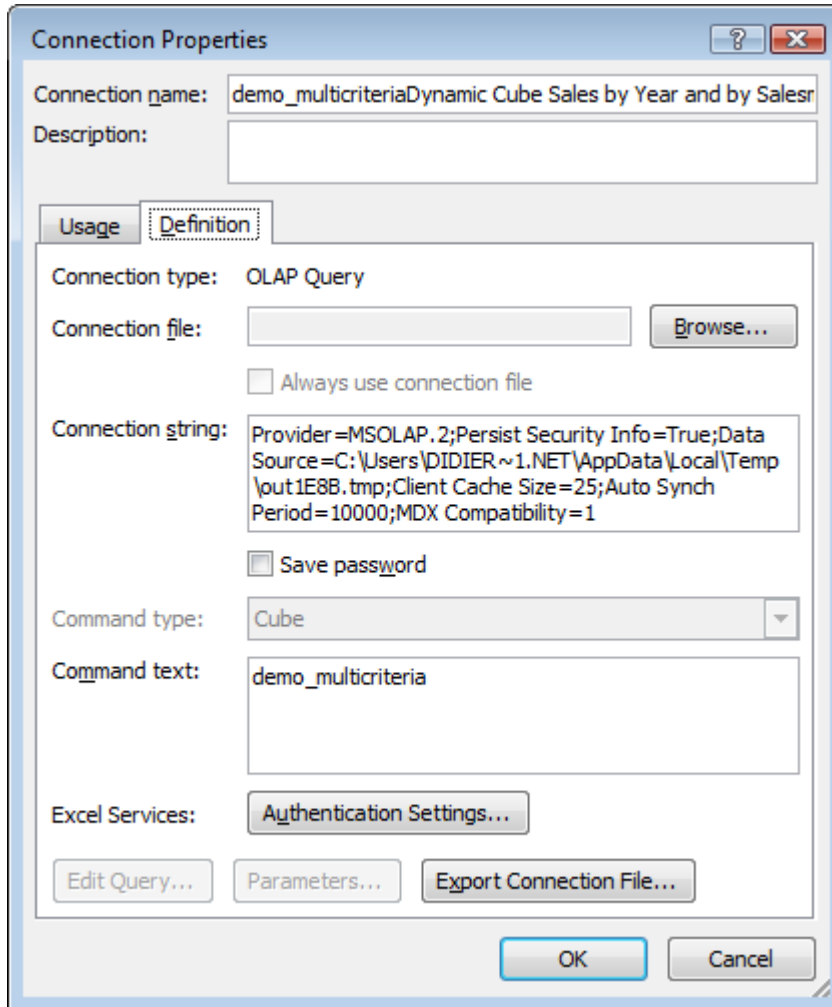




7. Click then **Data> Connections> Properties:**



8. Select the **Definition** Tab:



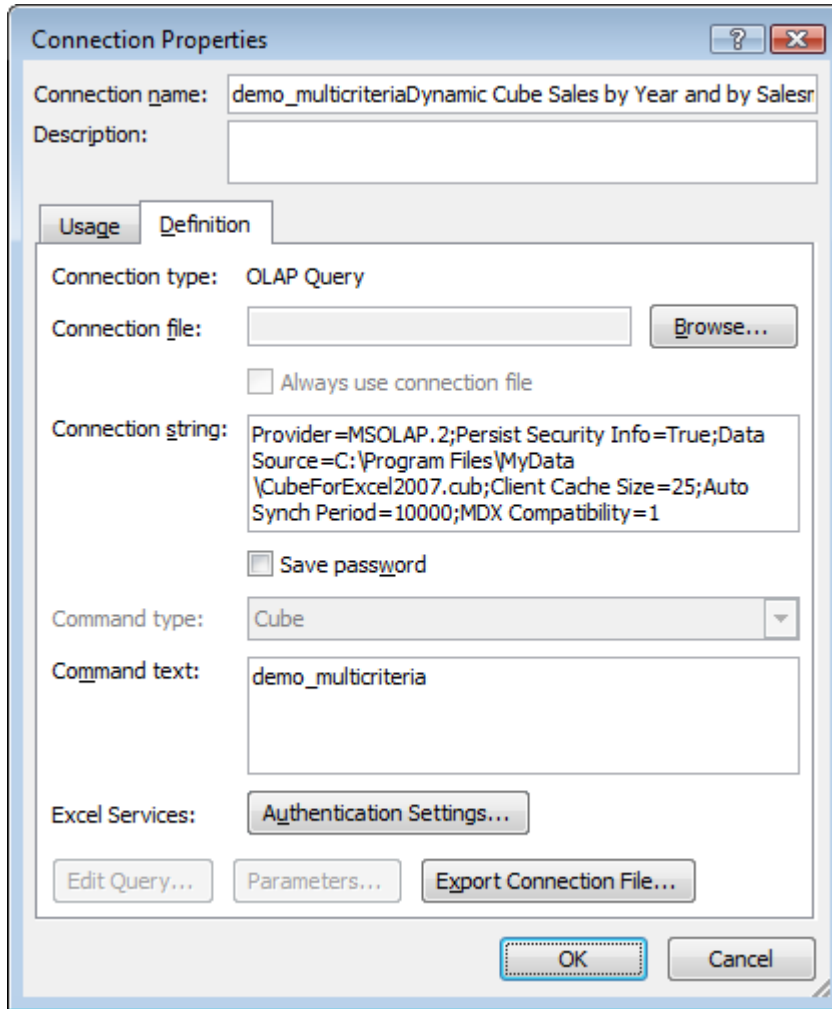
In the Connection String you should get an URL such as this example:

```
Provider=MSOLAP.2;Persist Security Info=True;  
Data Source=C:\Users\DIDIER~1.NET\AppData\Local\Temp\out1E8B.tmp;Client Cache Size=25;Auto Synch  
Period=10000;MDX Compatibility=1
```

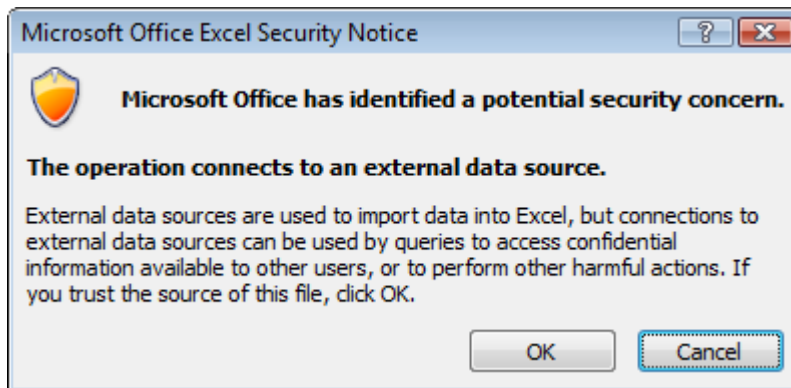
Where **C:\Users\DIDIER~1.NET\AppData\Local\Temp\out1E8B.tmp** is the temporary path name to access the cube data through the Web Portal.

9. Replace this path with the path containing the cube file you have received by e-mail

```
Provider=MSOLAP.2;Persist Security Info=True;  
Data Source=C:\Users\didier.NETREPORT\Documents\ClickAndDECIDE\CubeForExcel2007.cub;Client Cache  
Size=25;Auto Synch Period=10000;MDX Compatibility=1
```



10. Click OK and validate the next Warning:



11. See the result in the Excel 2007 file:



1	AREA	All AREA					
2							
3	TOTAL	Years					
4	SALNAME	2009	2010	Grand Total			
5	Bill Raley	\$586,901.80	\$980,617.60	\$1,567,519.40			
6	Diane Meyer	\$866,855.90	\$1,117,395.60	\$1,984,251.50			
7	Doug Castro	\$3,534,973.50	\$4,116,103.60	\$7,651,077.10			
8	Georges Dunel	\$1,058,488.90	\$974,480.30	\$2,032,969.20			
9	James Smith	\$877,680.00	\$260,714.00	\$1,138,394.00			
10	Jean Martin		\$325,283.80	\$325,283.80			
11	Jim Baxter	\$336,686.00	\$317,938.00	\$654,624.00			
12	John Brown	\$70,754.50	\$666,119.00	\$736,873.50			
13	Jon Kramer	\$1,145,743.30	\$2,468,566.00	\$3,614,309.30			
14	Karen Walker	\$376,173.00	\$65,860.00	\$442,033.00			
15	Kim Johnson	\$132,729.50	\$455,860.00	\$588,589.50			
16	Ric Smith	\$1,193,003.70	\$3,046,228.90	\$4,239,232.60			
17	Robert Salta	\$330,075.00	\$1,601,382.00	\$1,931,457.00			
18	Sanders Wanda	\$501,605.30	\$557,420.00	\$1,059,025.30			
19	Sandra Davis	\$454,850.30	\$1,582,517.60	\$2,037,367.90			
20	Tim Rosenberg	\$78,634.00	\$240,590.00	\$319,224.00			
21	Grand Total	\$11,545,154.70	\$18,777,076.40	\$30,322,231.10			
22							
23							
24							
25							
26							
27							
28							
29							

PivotTable Field List

Choose fields to add to report:

- Σ Values
 - TOTAL
- DATE
 - Years
- AREA
 - AREA
- SALNAME
 - SALNAME

Drag fields between areas below:

Report Filter: AREA

Column Labels: Years

Row Labels: SALNAME

Σ Values: TOTAL

12. Next time you will get a new .cub file, it will be enough to copy it into the same directory. Your Excel 2007 file is now ready to read it, having the correct URL (connection string) to read the new data from this file.