



Your Question

Article: 00120

Question:

How to Configure External Authentication for Net Report Web Portal

Net Report Answer

Introduction

Security devices can be used to control access to network resources. In addition, these access policies can ensure that only authorized users access given resources. Net Report has a built-in user database however, in large organizations with many devices an IT manager may prefer to leverage existing user databases without recreating the user database on multiple devices. Updating each network device's user database each time a personnel change occurs in a network that has tens or hundreds of these devices becomes quite time consuming.

The user authorization technologies RADIUS and LDAP, Active Directory provide services for user authentication through a centralized database of user information for organizations. This document explains how to configure Net Report to use LDAP, Active Directory, Radius to communicate with a Directory server and perform authentication and how to manage Net Report Web Portal login passwords for external data sources and NT.

In addition to the standard authentication options provided by Net Report, it is possible to perform authentication via the following other methods:

Full User Authentication & Management

To use the following methods the administrator must create user groups via the Net Report Web Portal Administrator (see section 1 and the Appendix). Authentication will be performed and parameters will then automatically be returned to the appropriate user groups in the Net Report Web Portal Administrator and the administrator can continue working with their existing user databases without needing to use the Net Report Web Portal Administrator:

- LDAP (Lightweight Directory Access Protocol), NetScape.
- Active Directory,
- RADIUS.

Partial User Authentication

To use the following methods the administrator must create users in the user groups via the Net Report Web Portal Administrator (see section 1 and the Appendix):

- Password Management for the Web Portal Login for External Data Sources.
- NT Security to check User Passwords for the Web Portal Login

This document is organized as follows:

- **Section 1:** Creating User Groups via Net Report Web Portal Administrator
- **Section 2:** Configuring LDAP Authentication for Net Report Web Portal
- **Section 3:** Configuring Active Directory Authentication for Net Report Web Portal
- **Section 4:** Configuring RADIUS Authentication for Net Report Web Portal
- **Section 5:** Using NT for Password Authentication
- **Section 6:** Managing Passwords for External Data Sources
- **Appendix:** Creating Web Portal Menus in the Net Report Web Portal Administrator

Table of Contents

Introduction	1
Section 1: Creating User Groups via Net Report Web Portal Administrator	3
Section 2: Configuring LDAP Authentication for Net Report Web Portal	4
Section 3: Configuring Active Directory Authentication for Net Report Web Portal.....	5
Section 4: Configuring RADIUS Authentication for Net Report Web Portal	6
Section 5: Using NT for Password Authentication.....	7
Section 6: Managing Passwords for External DataSources.....	7



Section 1: Creating User Groups via Net Report Web Portal Administrator

To create User Groups via Net Report Web Portal Administrator, please follow the steps below:

You can create user access rights to the Net Report Web Portal via the Net Report Web Portal Administrator. For example you can add, edit and delete User Groups and Users via the User Groups and Users tabs respectively.

Steps

1. Select **Start> Program Files> NetReport> Web Portal Administrator**.
2. Select the **User Groups** tab.
3. Select **Item>New> User Group**. The New User Group appears.
4. Rename the new User Group, for example: **MyUserGroup**.
5. Select the **Administrator** check box. **Note:** Administrator rights give you the privilege of scheduling a report in the Net Report Web Portal. A normal User does not have this privilege
6. Select the **MyUserGroup > Data sources access** branch.
7. Drag and drop the appropriate data source to the **Data sources access** branch.
8. Select the **MyUserGroup > Menu access** branch.
9. Drag and drop the appropriate to the **Menu access** branch. Note you may need to create a menu, to find out how, please see the Appendix at the end of this document.
10. Click the **Refresh** icon to apply the modifications you have made.

Section 2: Configuring LDAP Authentication for Net Report Web Portal

To configure LDAP Authentication for Net Report Web Portal, please follow the steps below:

Steps

1. Select the Net Report Web Portal Directory, by default
C:\Program Files\NetReport\WebPortal
2. Open the Aliases.ini file.
3. Add the following lines between the [General] and [NetReport] sections.

```
[Web]

LDAPServersForWebLogin=computer1

LDAPServerPort=389

LDAPConnectionString=uid=%USER%,ou=people,o=airius.com

LDAPSearchBase=ou=people,o=airius.com

LDAPSearchFilter=(uid=%USER%)

LDAPAttributeForGroups=mycompanygroup

LDAPDefaultGroup=Guest
```

4. Define the following:

LDAPServersForWebLogin: the hostname of the LDAP server to be queried for authentication. In this example, `computer1`. **Note:** use the comma “,” as a separator for multiple values for example, `LDAPServersForWebLogin=computer1,computer2,computer3` in which case a connection will try to be made to `computer1` first, if it is not possible to connect to `computer1` it will then try to connect to `computer2` and so on.

LDAPServerPort: the port number which the LDAP server is listening on. The standard port number is 389 for a non-SSL connection.

LDAPConnectionString: The character string which will be used to connect to the LDAP server, for example:

`uid=` User ID. Please note that `%USER%` will be automatically replaced by the User ID the user enters when logging into the Web Portal.

`ou =` Organisational Unit. Please modify this as appropriate, for example, `people`.

`o =` Organisation. Please modify this as appropriate, for example, `airius.com`.

LDAPSearchBase: searches LDAP Server for the Organisational Unit (`ou`) and Organisation (`o`) you specify for example:

`ou =` Organisational Unit. Please modify this as appropriate, for example, `people`.

`o =` Organisation. Please modify this as appropriate, for example, `airius.com`.

LDAPSearchFilter: configures the search filter for the resources, for example:

`uid=` User ID. Please note that `%USER%` will be automatically replaced by the User ID the user enters when logging into the Web Portal.

LDAPAttributeForGroups: The name of the attribute of the directory entry corresponding to the user group created via Net Report Web Portal Administrator, for example `mycompanygroup`. You may need to add this attribute to each user in your LDAP repository in order to use Net Report Web Portal.



LDAPDefaultGroup: allocates user(s) to the default group if the attribute defined in LDAPAttributeForGroups was not found. For example, Guest

5. Click **File>Save** to save the Aliases.ini file.

Section 3: Configuring Active Directory Authentication for Net Report Web Portal

To configure Active Directory Authentication for Net Report Web Portal, please follow the steps below:

Steps

1. Select the Net Report Web Portal Directory, by default C:\Program Files\NetReport\WebPortal
2. Open the Aliases.ini file.
3. Add the following lines between the [General] and [NetReport] sections.

```
[Web]
LDAPServersForWebLogin=computer1
LDAPServerPort=389
LDAPConnectionString=%USER%@mycompany.local
LDAPSearchBase=CN=users;DC=mycompany;DC=local
LDAPSearchFilter=(SAMAccountName=%USER%)
LDAPAttributeForGroups=mycompanygroup
LDAPDefaultGroup=Guest
```

4. Define the following:

LDAPServersForWebLogin: the hostname of the LDAP server to be queried for authentication. In this example, computer1. **Note:** use the comma “,” as a separator for multiple values for example, LDAPServersForWebLogin=computer1,computer2,computer3 in which case a connection will try to be made to computer1 first, if it is not possible to connect to computer1 it will then try to connect to computer2 and so on.

LDAPServerPort: the port number which the LDAP server is listening on. The standard port number is 389 for a non-SSL connection.

LDAPConnectionString: The character string which will be used to connect to the LDAP server, for example:

%USER%: will be automatically replaced by the User ID the user enters when logging into the Web Portal.

@mycompany.local: the domain. For example, net-report.local.

LDAPSearchBase: searches the LDAP Server for the CN (Common Name), DC (Domain Component) and DC (Domain Component) you specify for example:

CN: users. Please modify this as appropriate.

DC = mycompany. Please modify this as appropriate.

DC= local. Please modify this as appropriate.

LDAPSearchFilter: configures the search filter for the resources, for example:

SAM Account Name: (Security Accounts Manager service) Account Name

%USER% will be automatically replaced by the User ID the user enters when logging into the Web Portal.



LDAPAttributeForGroups: The name of the attribute of the directory entry corresponding to the user group created via Net Report Web Portal Administrator, for example `mycompanygroup`. You may need to add this attribute to each user in your Active Directory in order to use Net Report Web Portal.

LDAPDefaultGroup: allocates user(s) to the default group if the attribute defined in LDAPAttributeForGroups was not found. For example, `Guest`

5. Click **File>Save** to save the Aliases.ini file.

Section 4: Configuring RADIUS Authentication for Net Report Web Portal

To configure RADIUS (Remote Authentication Dial In User Service) Authentication for Net Report Web Portal, please follow the steps below. A RADIUS server can manage user profiles for authentication (verifying user name and password), configuration information that specifies the type of service to deliver, and policies to enforce that may restrict user access.

Steps

1. Select the Net Report Web Portal Directory, by default
C:\Program Files\NetReport\WebPortal
2. Open the Aliases.ini file.
3. Add the following lines between the [General] and [NetReport] sections.

```
[Web]
RadiusServerForWebLogin=192.168.3.113
AltRadiusServerForWebLogin=192.168.3.114
RadiusServerAuthenticationPort=1812
RadiusServerAccountingPort=1813
RadiusCHAP=0
RadiusRetries=3
RadiusTimeout=10,
RadiusAttributeForGroups=25
DefaultRadiusGroup=defaultgroup
```

6. Define the following:

RadiusServerForWebLogin: RADIUS Server Name or IP Address to use for Web Portal logins.

AltRadiusServerForWebLogin: an alternative RADIUS Server Name or IP Address to use for Web Portal logins. This is optional.

RadiusServerAuthenticationPort: the UDP port over which RADIUS authentication messages are sent and received. By default UDP ports 1812 and 1645 are used. UDP port 1812 is the reserved RADIUS-authentication port described in RFC 2138. UDP port 1645 is used by earlier RADIUS clients.

RadiusServerAccountingPort: the UDP port over which RADIUS accounting messages are sent and received. By default, ports 1813 and 1646 are used. UDP port 1813 is the reserved RADIUS accounting port described in RFC 2139. UDP port 1646 is used by earlier RADIUS clients.

RadiusCHAP: CHAP: Challenge Handshake Authentication Protocol. Contains the response value provided by the CHAP in response to the challenge.

RadiusRetries: the maximum number of attempts that you wish the RADIUS server to allow.



RadiusTimeout: the amount of time in seconds to wait for a response from the RADIUS server before making another connection attempt.

RadiusAttributeForGroups: the attribute of the directory entry corresponding to the user group created via Net Report Web Portal Administrator. You may need to add this attribute to each user in your RADIUS repository in order to use Net Report Web Portal.

DefaultRadiusGroup: allocates user(s) to the default group if the attribute defined in LDAPAttributeForGroups was not found. For example, `defaultgroup`

7. Click **File>Save** to save the Aliases.ini file.
8. Select C:\Program Files\NetReport\SetSharedSecret.exe
9. Double-click the SetSharedSecret.exe file
10. Enter your shared secret for Radius. The Shared Secret will be encrypted and written in the Registry. The shared secret is used to sign RADIUS data packets to ensure they are coming from a trusted source, it is also used to encrypt user passwords with certain authentication methods
11. Click **OK**.
12. Note the related dictionary: default.rad in C:\Program Files\NetReport\WebPortal.

Section 5: Using NT for Password Authentication

To use NT User Names and Passwords in the Net Report Web Portal using NT Security, IIS and d7cgiwin must be on an NTFS disk.

Note: the administrator must create users in the user groups via the Net Report Web Portal Administrator (see section 1 and the Appendix):

Steps

1. Select the Net Report Web Portal Directory, by default
C:\Program Files\NetReport\WebPortal
2. Open the Aliases.ini file.
3. Add the following lines between the `[General]` and `[NetReport]` sections.

```
[Web]
```

```
UseNTUserForWebLogin=1
```

Note: UseNTUserForWebLogin will override other authentication methods in the Aliases.ini file.

Section 6: Managing Passwords for External DataSources

To use a Data Source to login: only checks the login via the web but does not forbid using another source which uses another login by default, please follow the steps below:

Note: the administrator must create users in the user groups via the Net Report Web Portal Administrator (see section 1 and the Appendix):

Steps

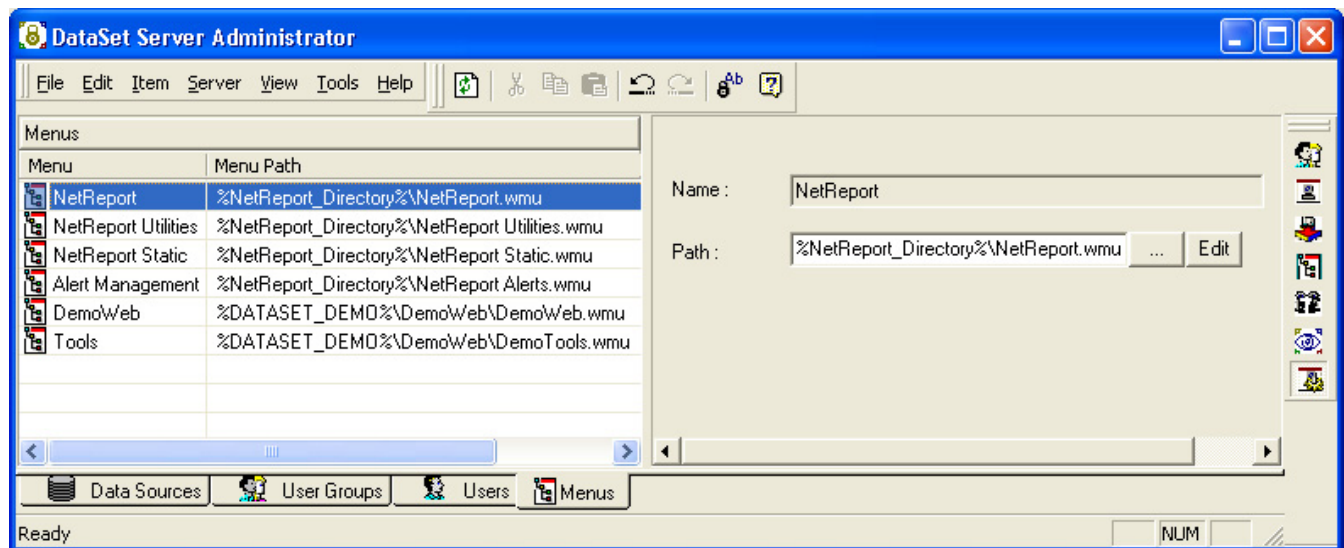
1. Select the Net Report Web Portal Directory, by default
C:\Program Files\NetReport\WebPortal

2. Open the Aliases.ini file.
3. Add the following lines between the [General] and [NetReport] sections.

```
[Web]  
  
DataSourceForWebLogin=SQL Server D77
```


Appendix: Dealing with Menus

You can manage the menus displayed in the Net Report Web Portal via the Net Report Web Portal Administrator.

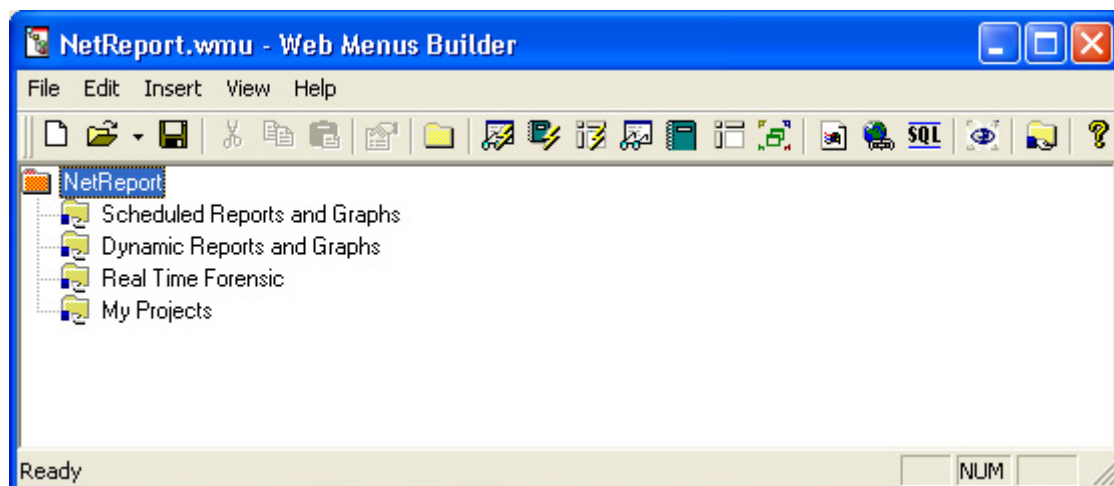


Menu: the name of the menu as it appears in the Net Report Web Portal Menu pane.

Menu Path: the path where the *.wmu menu file is saved.

...: displays the Open dialog box to enable you to select a *.wmu menu file to attribute to the menu.

Edit: opens the **Web Menu Builder**, where you can modify a menu.



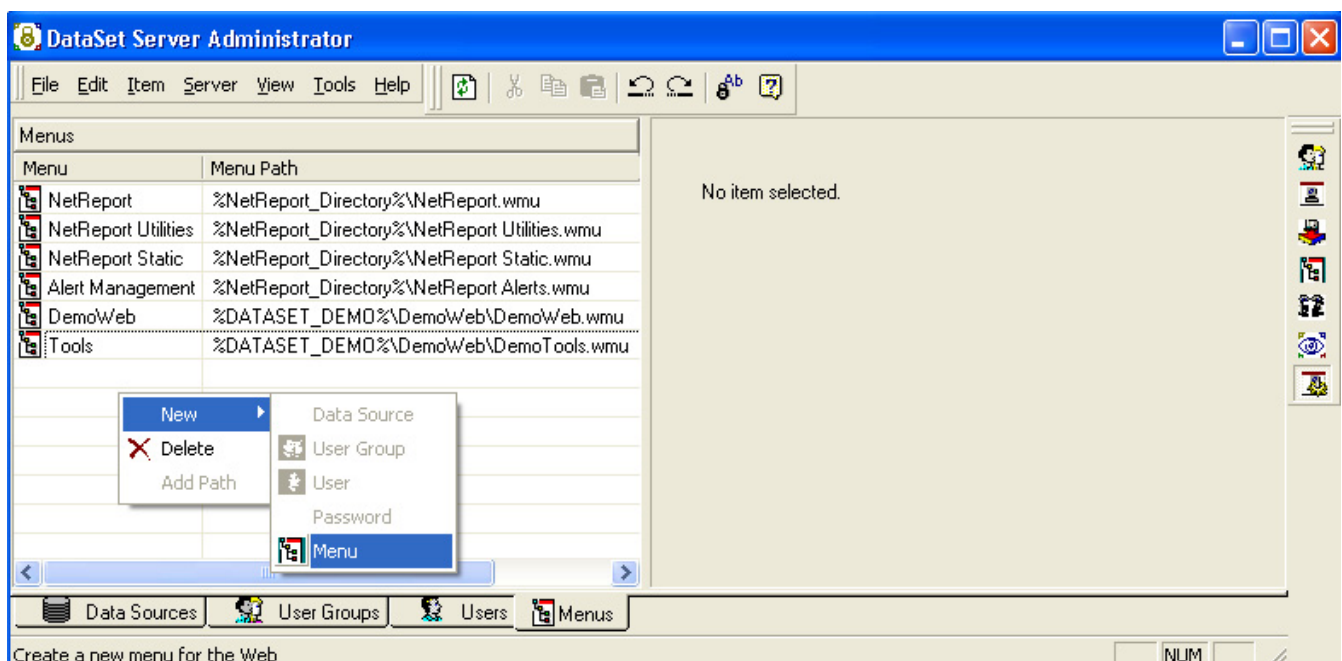
Note: Double-clicking a shared folder in the **Web Menu Builder** enables you to view and/or modify the menu properties via the **Shared folder properties** pane.

Creating a new Menu in the Net Report Web Portal Administrator.

To create a menu and assign it to a User Group in the Net Report Web Portal Administrator, please follow the steps below. Please note that the menu created in this example is called: MyMenu, please replace this by the name you want.

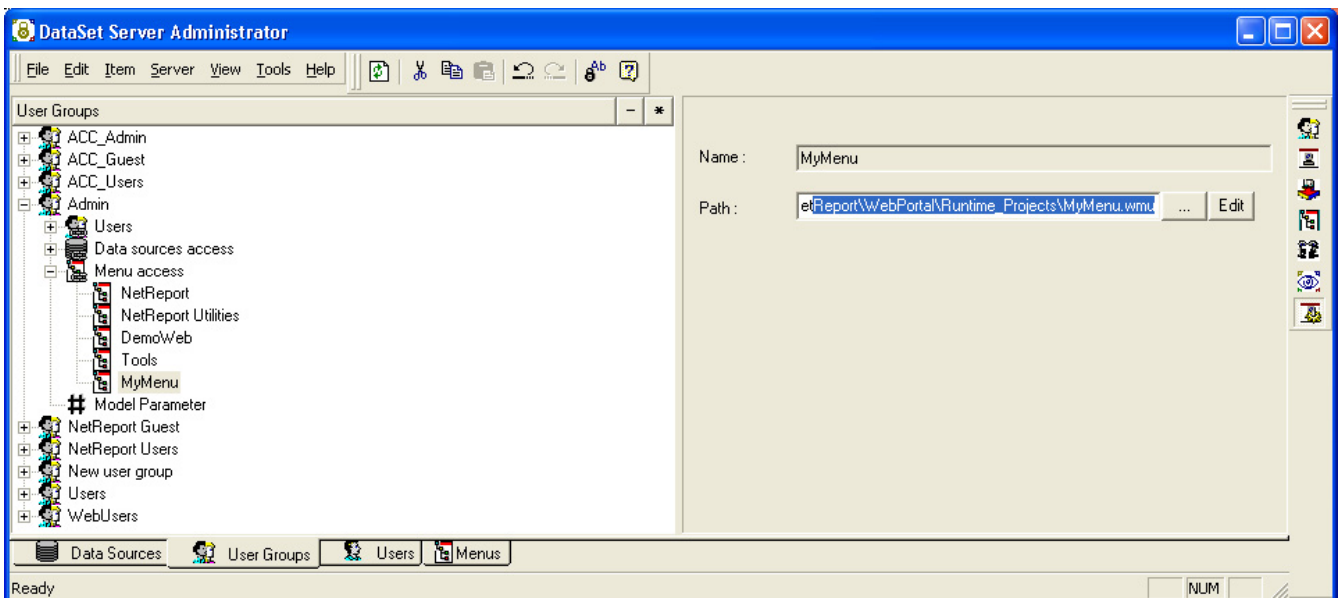
Steps

1. Select **Start> All Programs> NetReport> Web Portal Administrator**.
2. Enter your **User ID** and **Password**.
3. Click **OK**.
4. Select the **Menus** tab.
5. Right-click and select **New> Menu** in the context menu.



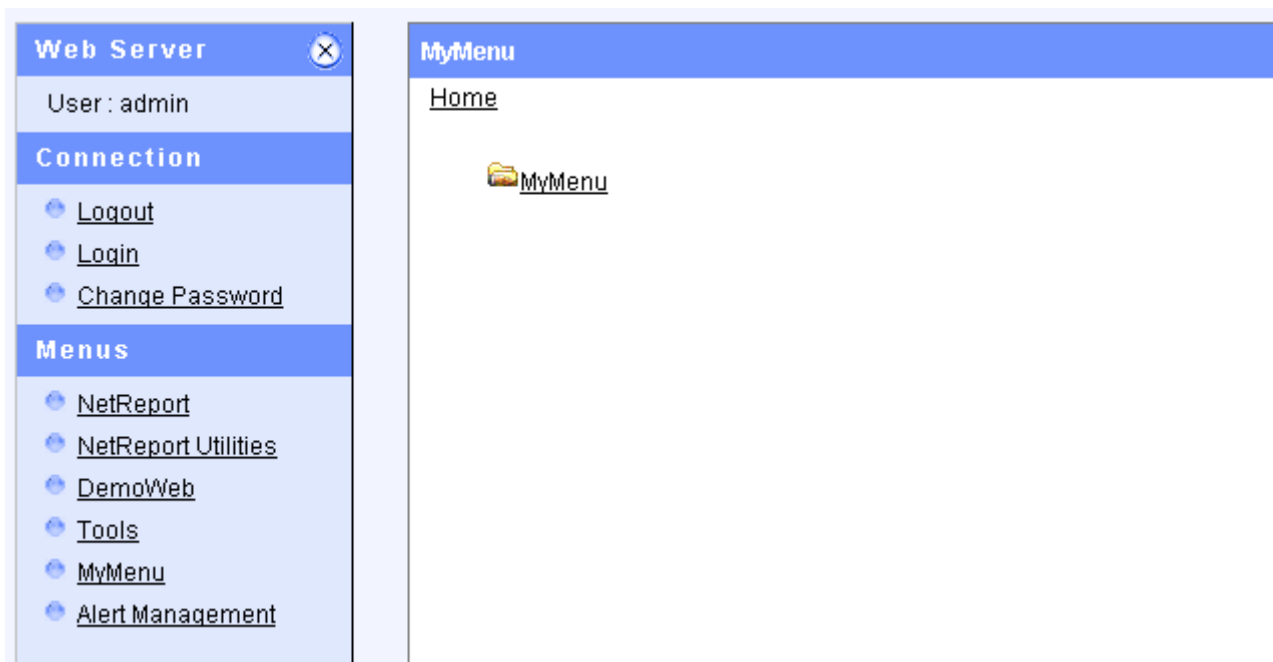
6. The **New Menu** row appears in the **Menus** table.
7. Rename the new menu as appropriate, in this example **MyMenu**.
8. Select the menu you created, in this example **My Menu**.
9. Click **Edit**. The **Web Menus Builder** appears.
10. Click the Shared Folders icon in the tool bar.
11. Rename the shared folder as appropriate, in this example **MyMenu**.
12. Double-click the **MyMenu** shared folder. The Shared folder properties pane appears.
13. Click the right-arrow and select **Browse...** to the right of the **Folder path** text box.
14. Select the path: C:\Program Files\NetReport\WebPortal\Runtime_Projects\menu
15. Select the **Format** tab.
16. Double-click the **HTML report** row to clear its selection.

17. Double-click the **PDF report** row to enable its selection.
18. Click **OK**.
19. Click **Save**.
20. Enter the **File Name**, for example: MyMenu.wmu.
21. Save the file at C:\Program Files\NetReport\WebPortal\Runtime_Projects
22. Close **Web Menus Builder**.
23. Select **MyMenu**.
24. Click ... and select MyMenu.wmu.
25. Click **Open**.
26. Select the **User Groups** tab.
27. Perform a drag-and-drop operation – drag **MyMenus** from the right pane to the User Group you have rights to, in this example to the **Admin** user group.



28. Select **File> Update Security**.
29. The new menu is enabled.


30. Refresh the Net Report Web Portal and note the **MyMenu** menu appears in the menu tab.



The screenshot displays two side-by-side browser tabs. The left tab is titled 'Web Server' and contains the following information:

- User: admin
- Connection**
 - [Logout](#)
 - [Login](#)
 - [Change Password](#)
- Menus**
 - [NetReport](#)
 - [NetReport Utilities](#)
 - [DemoWeb](#)
 - [Tools](#)
 - [MyMenu](#)
 - [Alert Management](#)

The right tab is titled 'MyMenu' and contains the following content:

- [Home](#)
-  [MyMenu](#)