

## Your Question

Article: 00104

### Question:

What are the Net Report Remote WMI Service Registry Entry Values?

## Net Report Answer

### Introduction

This article explains the Remote WMI Service Registry Value parameters. To locate the Remote WMI Service Registry Values, please follow the steps below:

### Steps

1. Select **Run...> regedit**. The **Registry Editor** appears.
2. Select **HKEY\_LOCAL\_MACHINE> SOFTWARE> NetReport> RemoteWmiSvc** in the left pane.

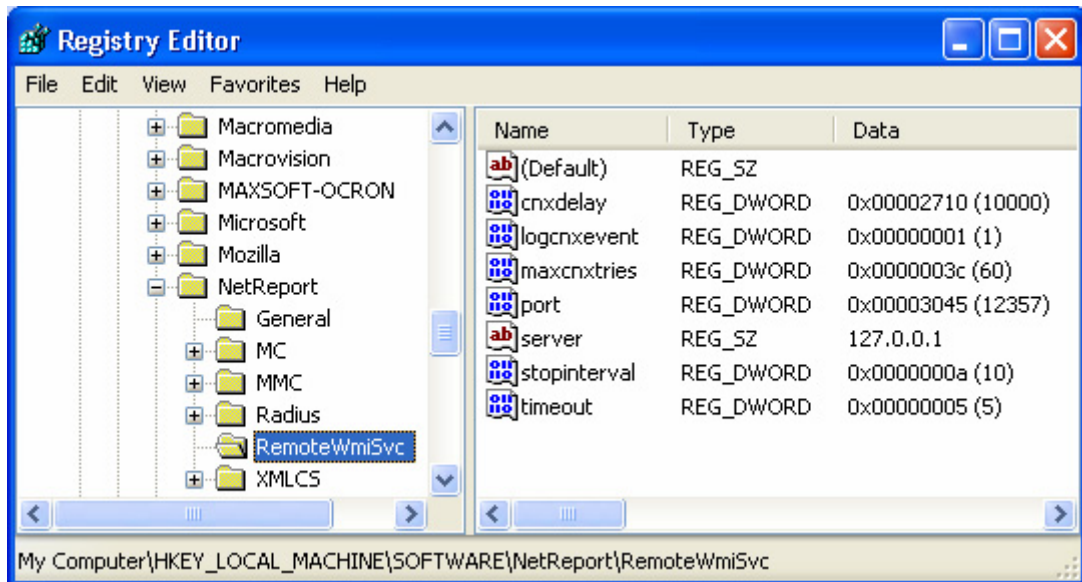


Figure 1: RemoteWmiSvc branch

3. Note the following Net Report Remote WMI Service Registry Parameter Values:

**cnxdelay:** the default value is 10 000 milliseconds. This is the amount of time the Remote WMI Service waits before attempting to reconnect to the server when a connection with the server was cut.

**logcnxevent:** the default value is 1, however the value can be 0 or 1. Select 1 to display connection details (connection established, connection closed, connection attempt) for each event in the Event Viewer.

**maxcnxtries:** the default value is 60 times. The number of attempts made by the Net Report Remote WMI Service to reconnect to the Server. If a connection is not reestablished after 60 attempts then the memory queue is emptied. After 60 seconds the Net Report Remote WMI Service will keep retrying to reestablish a connection. In reality to calculate the maximum amount of time before the memory queue is emptied then use the following formula:

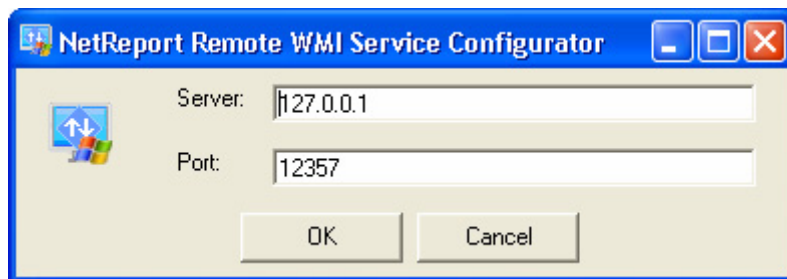
$$\text{cnxdelay} \times \text{maxcnxtries}$$

For example:

$$10000 \times 60 \\ = 10 \text{ minutes}$$

(the memory queue will be emptied every 10 minutes)

**port:** the port you configured via the Net Report Remote WMI Service Configurator. You can modify the port either via the Registry Editor or via the Net Report Remote WMI Service Configurator (please see Figure 2). To open the Net Report Remote WMI Service Configurator select **Start> All Programs> NetReport> Remote Wmi Service> Net Report Remote WMI Service Configurator**.



**Figure 2:** Net Report Remote WMI Service Configurator

**server:** the server name you configured via the Net Report Remote WMI Service Configurator. You can modify the server either via the Registry Editor or via the Net Report Remote WMI Service Configurator (please see Figure 2). To open the Net Report Remote WMI Service Configurator select **Start> All Programs> NetReport> Remote Wmi Service> Net Report Remote WMI Service Configurator**.

**stopinterval:** the default value is 10 seconds. This is the amount of time the Net Report Remote WMI Service waits when the service has stopped. By default, the service will wait 10 seconds after it has sent the last events before completely stopping to avoid WMI (on the computer which the service is installed on) from restarting the service. You can increase this value if necessary.

**timeout:** the default value is five seconds. This is the timeout after which the service interrupts the connection. During the timeout the Net Report Remote WMI Service tries to send events to the server, at the end of the timeout the service will consider that the connection is timed out.

4. Select **Start> Control Panel> Administrative Tools> Services** if you modified a Net Report Remote WMI Service entry value.

- Restart the **NetReport Remote WMI Service** to ensure that your modifications are taken into account. Right-click **NetReport Remote WMI Service** and select **Restart** from the context menu.

