



## Your Question

**Article: 00099**

**Question:**

How to Export and Import Net Report Filter(s) and/or Parser(s)?

## Net Report Answer

### Introduction

Export and Import any Net Report Filter and Parser(s) in a matter of clicks. Installing, integrating or managing technical support for Filter and Parsers is now even easier. Net Report's Filter and Parser Import and Export Feature enables you to save filters and all the associated parsers. Filters and parsers can easily be imported – enabling easy update and support management.

This Article explains how to export a Net Report filter and its parsers and how to import a filter and/or its parsers. This Article is made up of the following two sections:

- **Task 1:** Exporting a Filter and its Parsers.
- **Task 2:** Importing a Filter and/or its Parser(s) and/or its Scheduled Tasks.

### Table of Contents

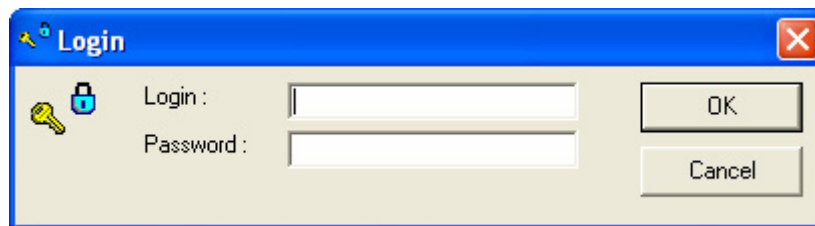
	Page
<b>Task 1: Exporting a Filter and its Parsers.....</b>	<b>3</b>
<b>Task 2: Importing a Filter and/or its Parsers.....</b>	<b>6</b>

## Task 1: Exporting a Filter and its Parsers

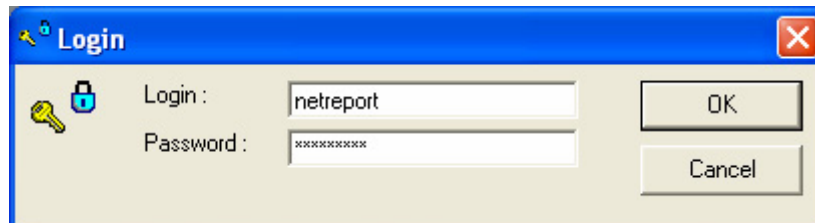
When you export a Filter you export all the associated Flat File and Syslog parsers. Please follow the steps below to export a Filter and its Parsers from the Net Report Management Console.

### Steps

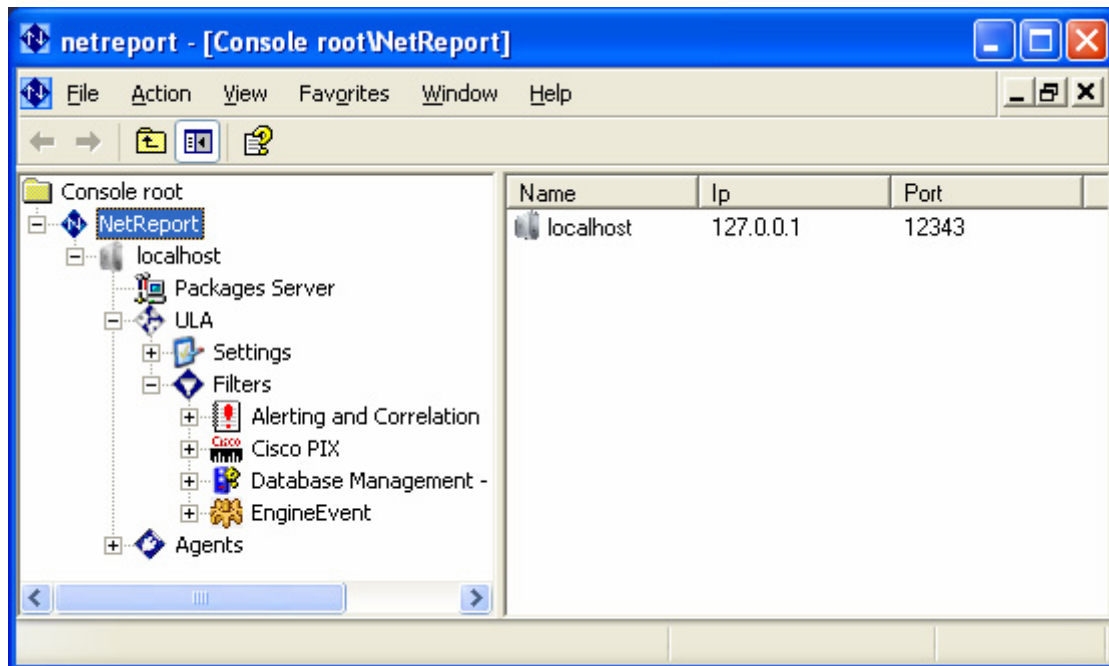
1. Select **Start>All Programs>Net Report> Management Console** in the **Start** menu. The Net Report **Login** dialog box appears.



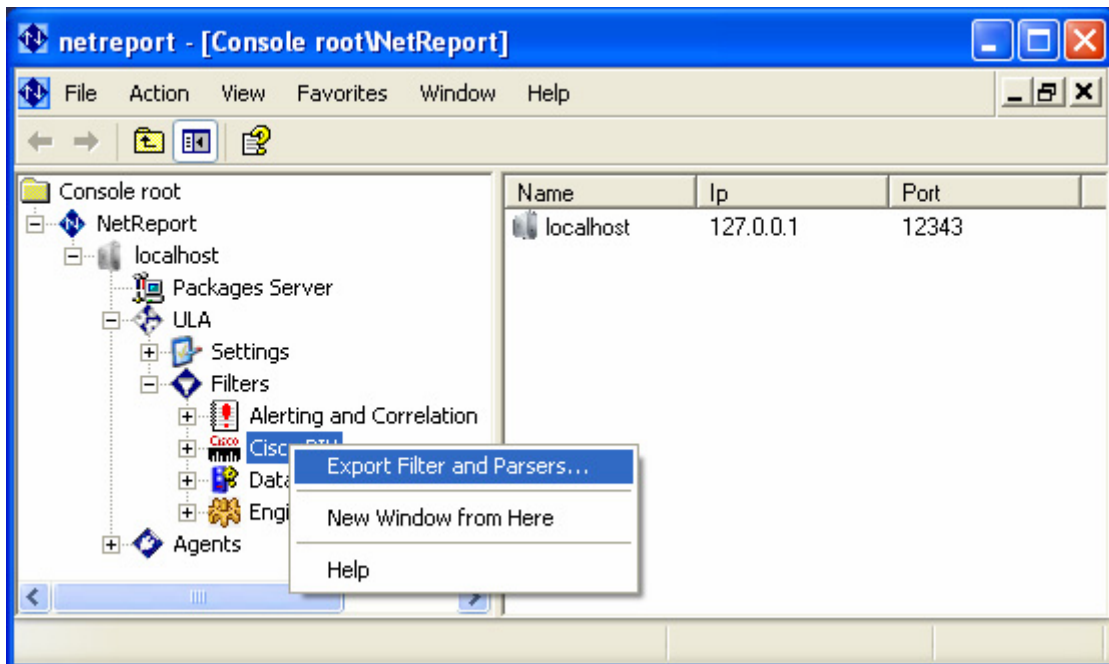
2. Enter your **Login** and **Password** and click **OK**. The Net Report Management Console loading screen appears followed by the **Net Report Management Console**.



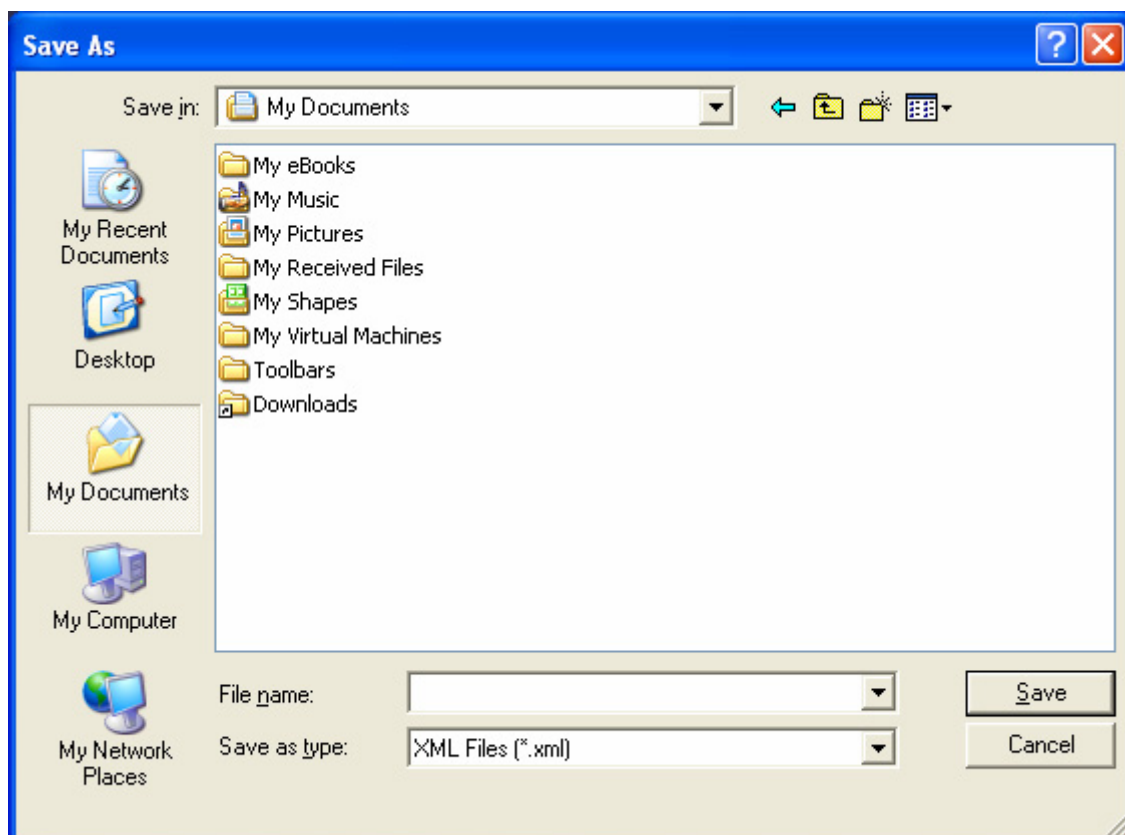
3. Select **Console root> NetReport> localhost> ULA> Filters** in the left **Console root** pane.



- Right-click on the Filter you want to export. In this example the **Cisco PIX** filter. The context menu appears.

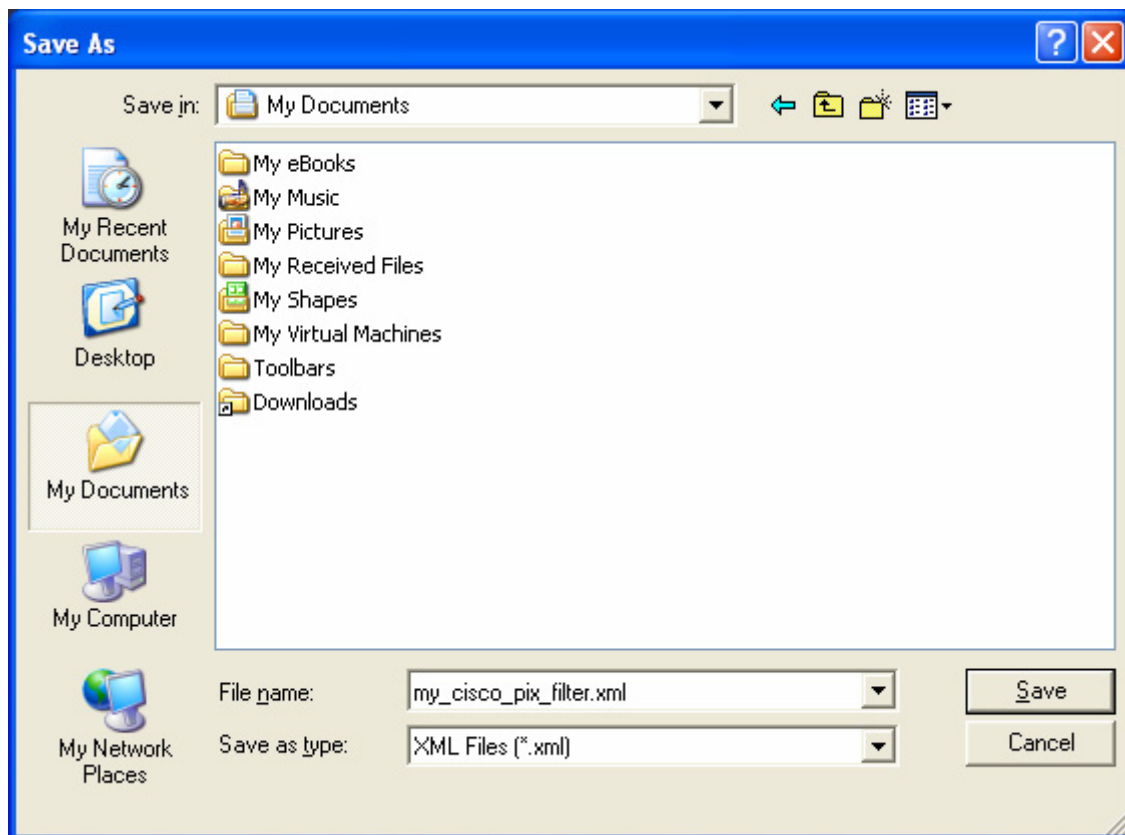


- Select **Export Filter and Parsers...**. The **Save As** dialogue box appears.

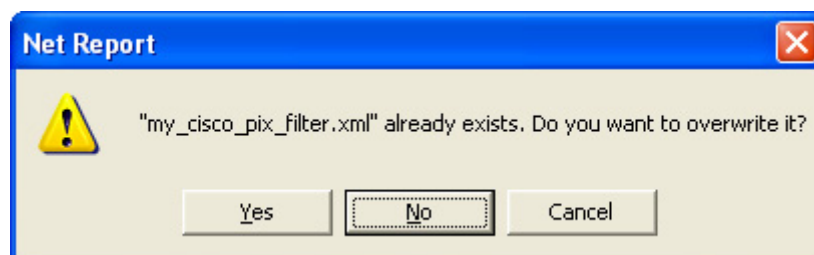


6. Select the export destination folder and enter the **File name** you want for the Filter you export and click **Save**. In this example, my\_cisco\_pix\_filter.

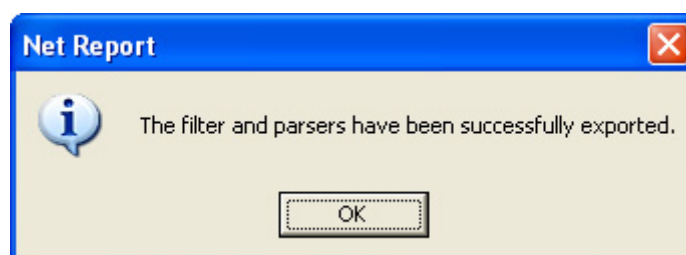
 **Note:** the File format by default is \*.xml. Please ensure you export Filters in \*.xml format.



Note the **Warning** message. Click **Yes** to overwrite or **No** to enter another File Name if the file already exists.



7. Note the Status message. Click **OK**.



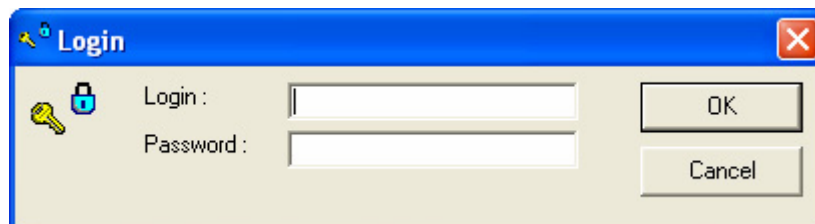
**Status:** Task 1 has been successfully accomplished, your filter and parsers have been successfully exported.

## Task 2: Importing a Filter and/or its Parsers

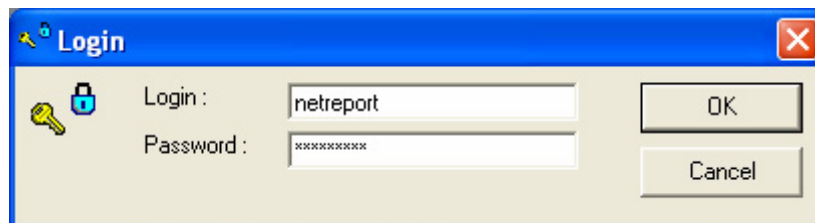
When you import a filter, you import the filter along with each of the associated parsers. To import a Filter and/or its Parsers, please follow the steps below:

### Steps

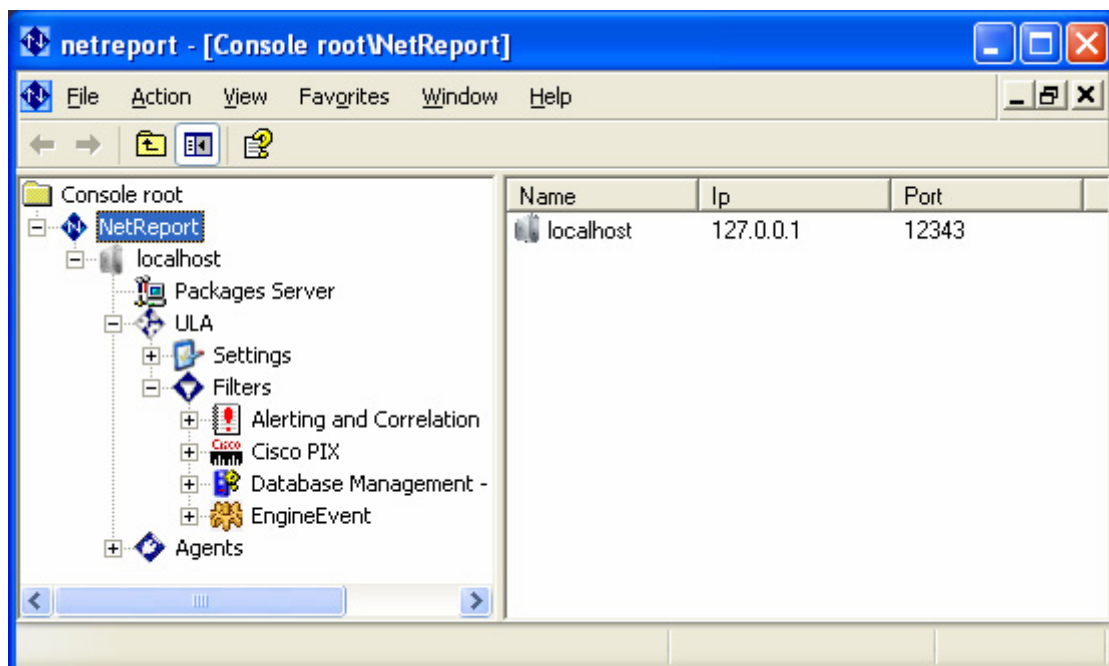
1. Select **Start>All Programs>Net Report> Management Console** in the **Start** menu. The Net Report **Login** dialog box appears.



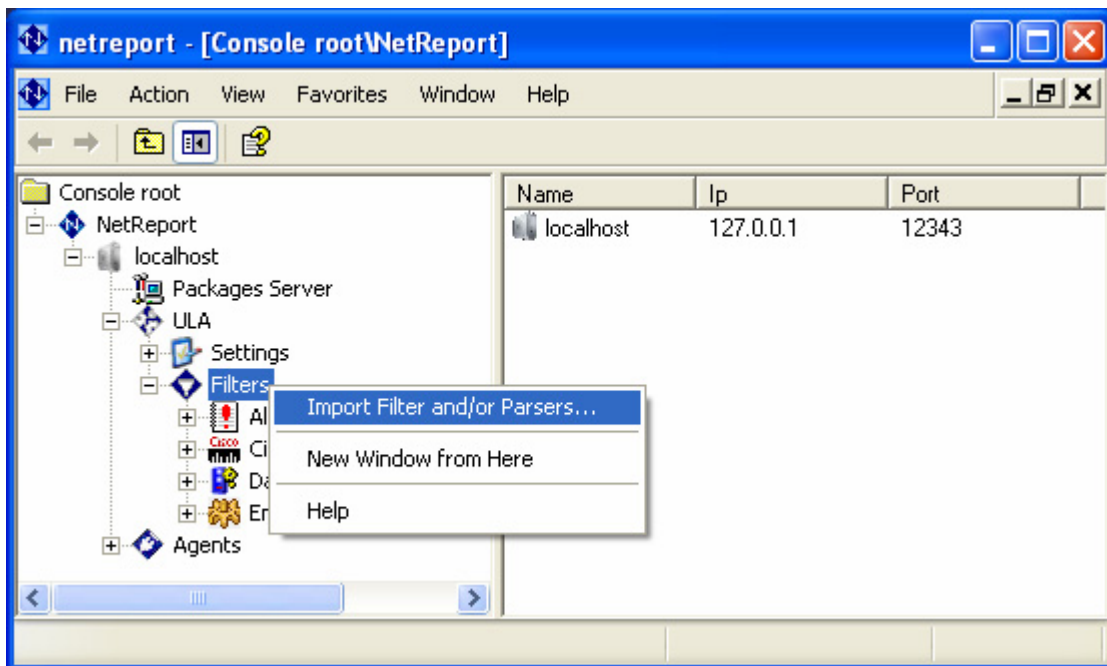
2. Enter your **Login** and **Password** and click **OK**. The Net Report Management Console loading screen appears followed by the **Net Report Management Console**.



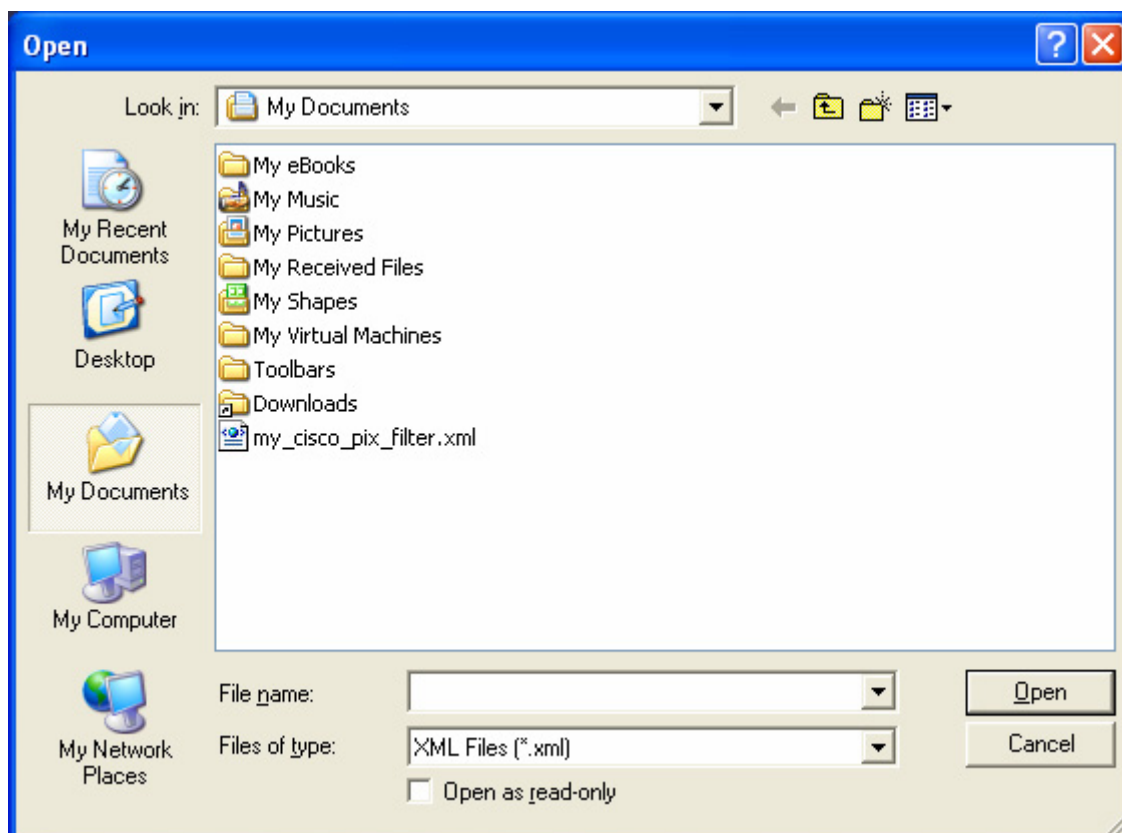
3. Select **Console root> NetReport> localhost> ULA> Filters** in the left console root pane.



4. Right-click the **Filters** branch to reveal the context menu.
5. Select **Import Filter and/or Parsers...** The **Open** dialog box appears.

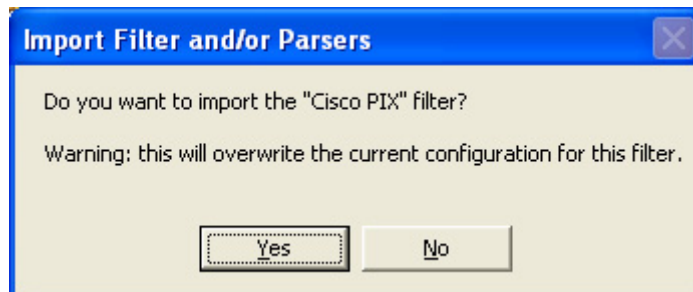


6. Select the filter you want to import. In this example, my\_cisco\_pix\_filter.xml.



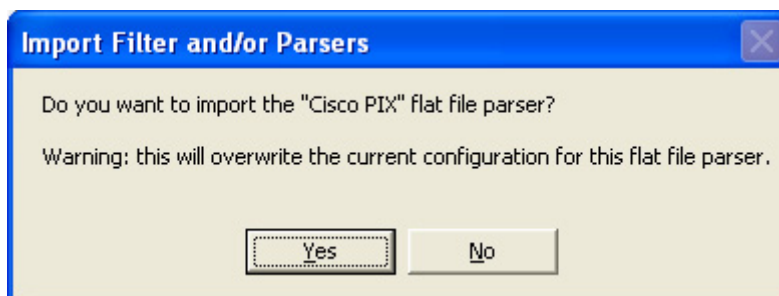
- Click **Open**. The **Import Filter and/or Parsers** dialog box appears.
- Click **Yes** at the base of the **Do you want to import the "Cisco PIX" filter** message.

**Note:** if you click **Yes** your current configuration for this filter will be overwritten.



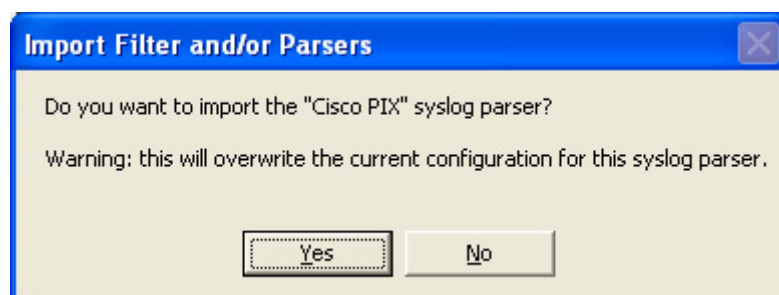
- Click **Yes** at the base of the **Do you want to import the "Cisco PIX" flat file parser** message.

**Note:** if you click **Yes** your current configuration for this flat file parser will be overwritten.



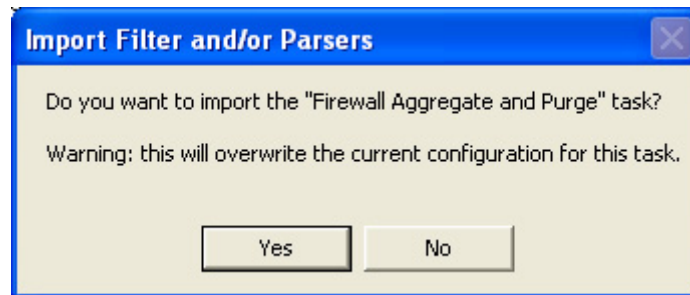
- Click **Yes** at the base of the **Do you want to import the "Cisco PIX" syslog parser** message.

**Note:** if you click **Yes** your current configuration for this syslog parser will be overwritten.

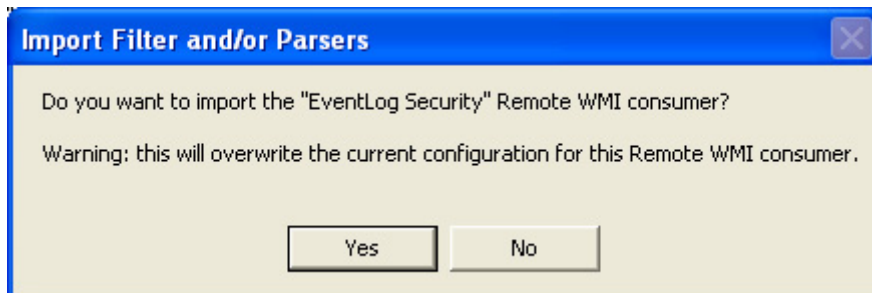
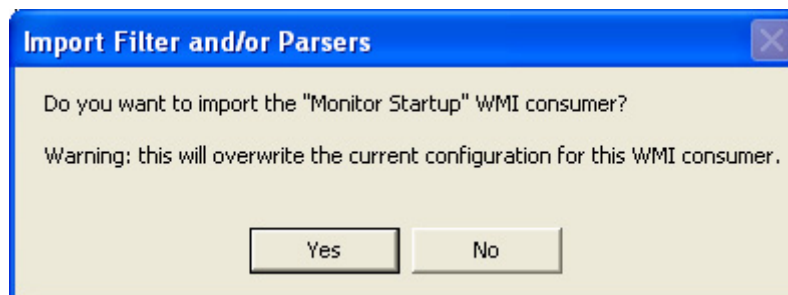




11. Click **Yes** at the base of the **Do you want to import the "SCHEDULED TASK NAME" task?**

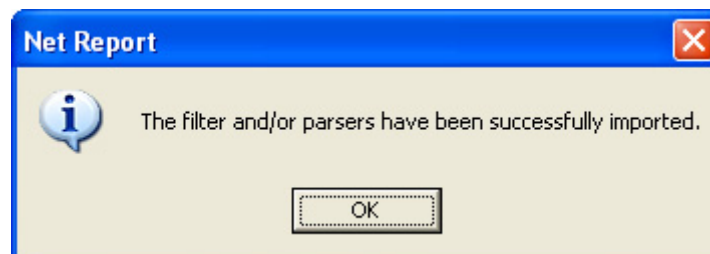


**WMI Warning:** if you have imported a Microsoft WMI Filter then you will asked if you want to import the active WMI consumers for both the Microsoft WMI Agent and the Remote Microsoft WMI agent.

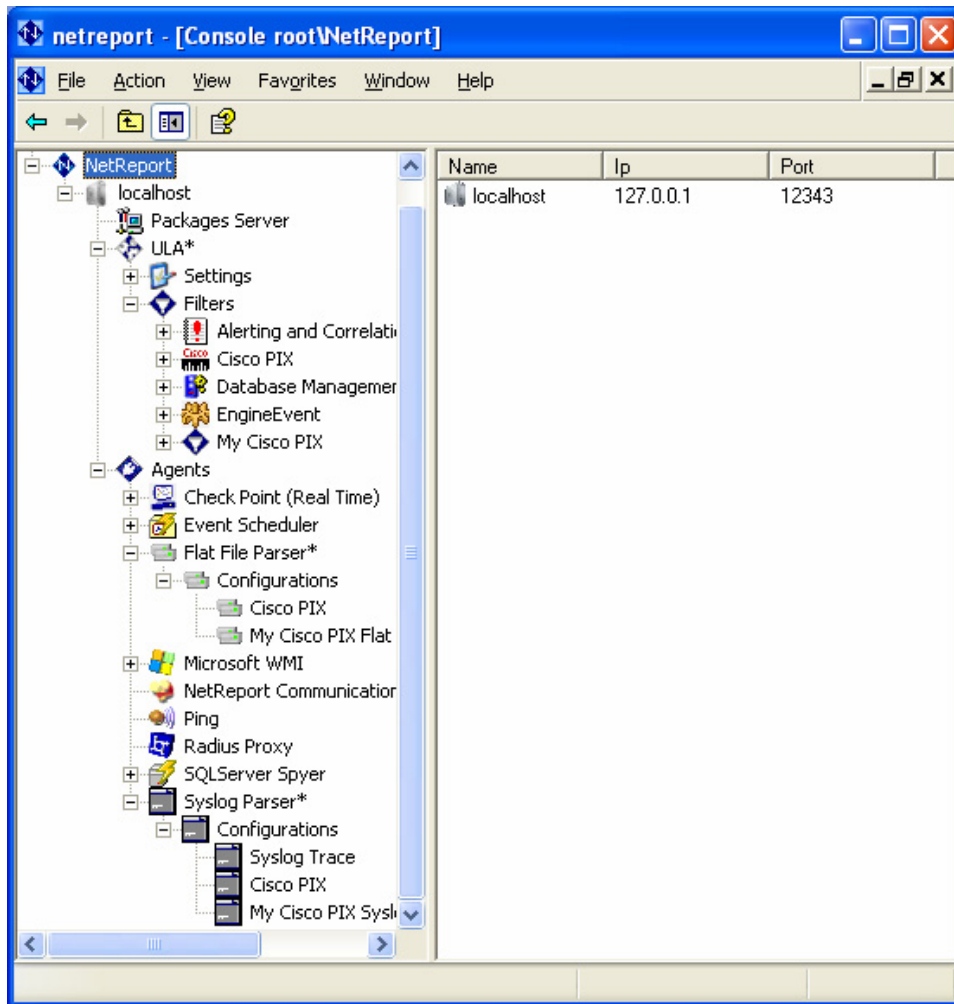


Click **Yes** if you want to import the active Remote WMI consumer(s).

12. Note the status message and click **OK**.



13. Note the addition of the new Filter and Parsers in the left **console root** pane.



14. Apply changes at each branch marked by an asterisk. In this example, please click the **Apply Changes** button at the following branches:
- Console root> Net Report> local host> ULA**
  - Console root> Net Report> local host> Agents> Flat File Parser**
  - Console root> Net Report> local host> Agents> Syslog Parser**

**Status:** Task 2 has been successfully accomplished! The Filter and its associated parsers have been successfully imported.