



Your Question ▾

Article 00025

Problem or Question:

How To Deal With The "Bad Shared Secret" Error With The Net Management Console

Quick Info ▾

Found In:

Net Report Version 3.0

Article Last Updated:

Friday July 23, 2004

Product Information ▾

The Information in this article applies to:

Product:

Net Report

Version:

3.0

[Device or Interface]:

Management Console

Symptoms ▾

Problem Type:

NetReport Error Message: "Cannot load XML from Concentrators". Connection with the Configuration Server could not be established because of a bad shared Secret.

Replication Context:

1. Install Net Report from the Net Report website.
2. Follow the Configuration Wizards' Instructions.
3. Enter the **Net Report Management Console Login** and **Password** in the **Configuration Wizard Database Configuration** Screen.
4. Enter a different **Shared Secret** in the **Net Report XML Configuration Server** from that in the **Net Report Management Console XML Configuration Server Configuration** drop-down section **Shared Secret** field.
5. Launch the **Net Report Management Console**. The Error message below appears.

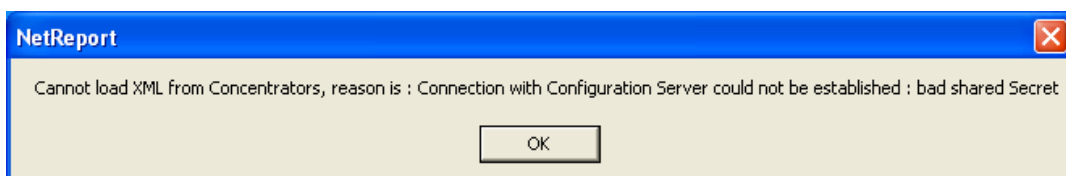
Error Messages:

The following two Error Messages Appear:

Error Messages:

1. When the **Net Report Management Console** is launched the following message appears:

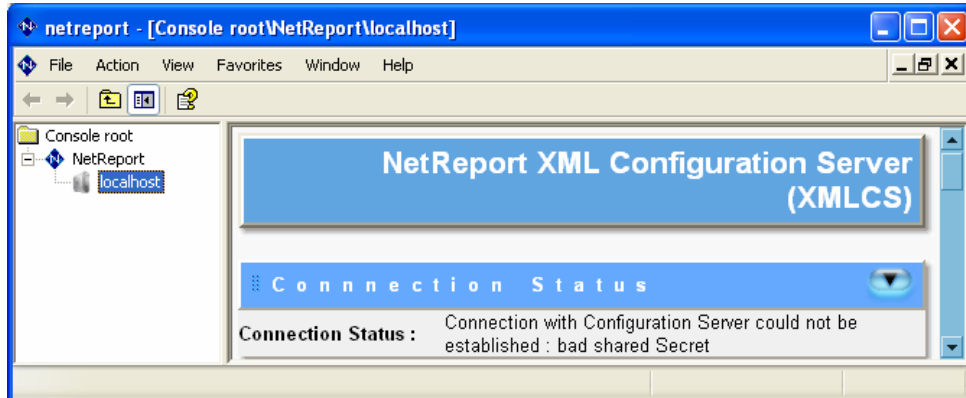
"Cannot load XML from Concentrators, reason is : Connection with Configuration Server could not be established : bad shared Secret".



2. When the **Net Report Management Console** is open, you select **Console root>NetReport>localhost** in the left **Console root** pane, the following **NetReport**



XML Configuration Server (XMLCS) screen appears in the central pane with the Connection Status bad shared Secret error:



Net Report Answer ▶

Cause:

This is a very minor error and can be easily remedied.

- i** The **Shared Secret** in the **NetReport XML Configuration Server** does not match the **Net Report Management Console XML Configuration** screen **Configuration** drop-down section **Shared Secret** field.
- i** The **Net Report Configuration Wizard** uses the Net Report user's **Password** as a default **Shared Secret**. This example uses the **Login/Password: netreport/netreport**. You must replace this by your own confidential **Login/Password**. Please see the Net Report Knowledge Base for further information.

Resolution or Work Around:



Please replace the **Shared Secret** in the **Net Report XML Configuration Server** with your **Net Report Configuration Wizard Password**. In this example: netreport.

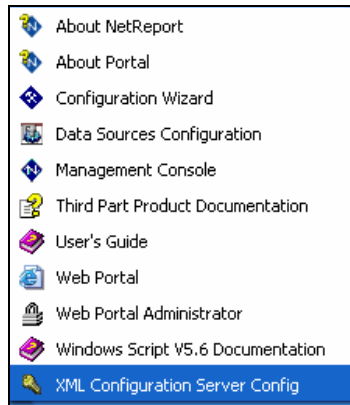


Please ensure you enter the same **Shared Secret** in the **Net Report XML Configuration Server** as in the **Net Report Management Console XML Configuration** screen **Configuration** drop-down section **Shared Secret** field. To do so, please follow the steps below:

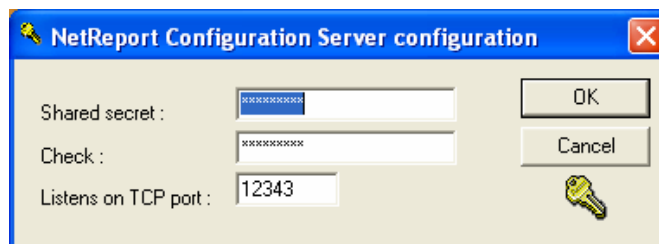
Configuring The Net Report XML Configuration Server

Steps

1. Select **Start > All Programs > NetReport > XML Configuration Server Config.**



The **NetReport Configuration Server configuration** dialog box appears.



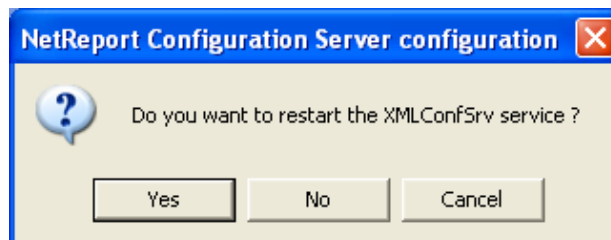
2. Enter the **Password** you entered in the **Net Report Configuration Wizard** in the **Shared secret** and **Check** fields.

In this example the **Shared secret** field: netreport

In this example the **Check** field: netreport

You must replace these Shared secret and check fields by your own confidential shared secret.

3. Click **OK**. The **NetReport Configuration Server configuration** dialog box appears:



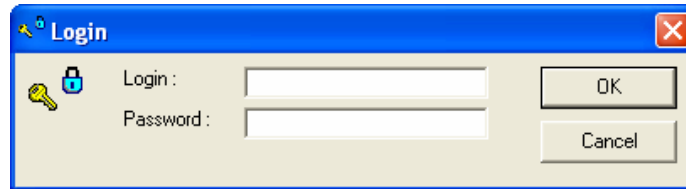
4. Click **Yes** to restart the **XML Configuration Server** service (that is, the XMLConfSrv service).



Configuring The Net Report Management Console

Steps

1. Select **Start > All Programs > NetReport > Management Console**. The **Login** dialog box appears.

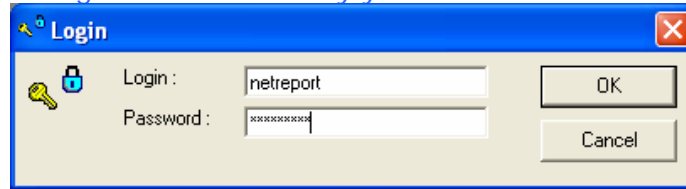


2. Enter the **Login** and **Password** you specified in the **Net Report Configuration Wizard**. In this example:

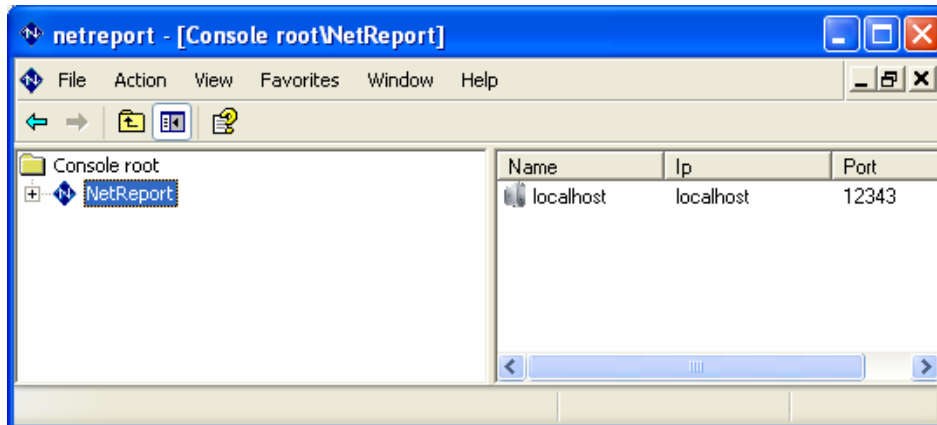
Login: netreport

Password: netreport

You must replace the **Login** and **Password** by your own confidential **Login** and **Password**.



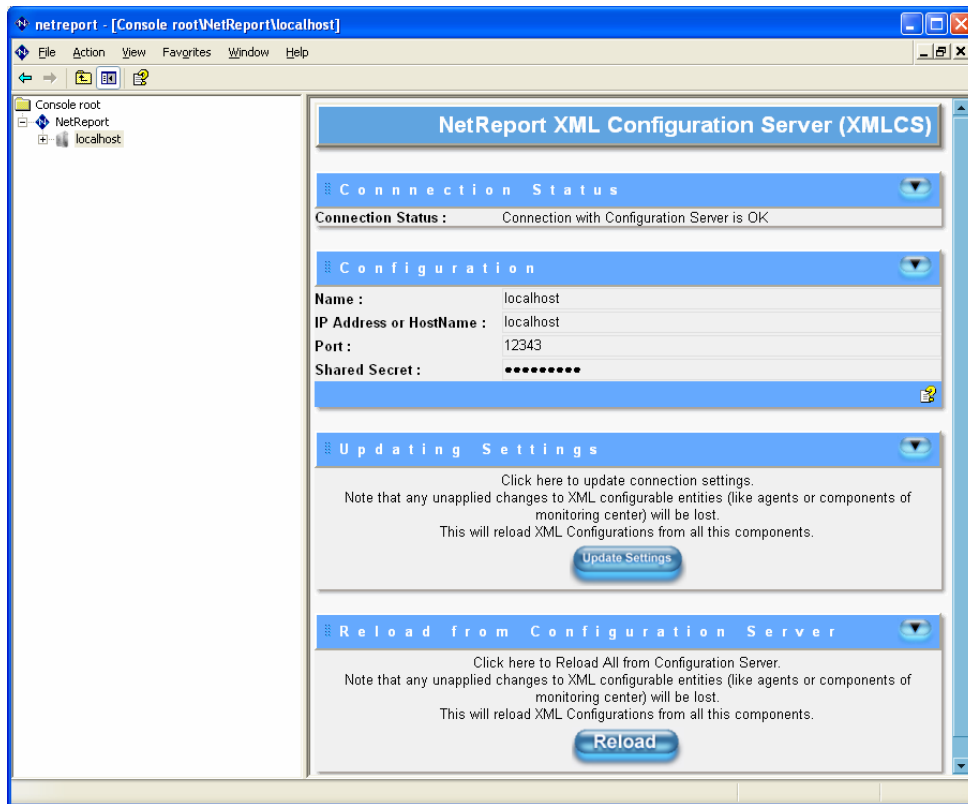
The **Net Report Management Console** appears.



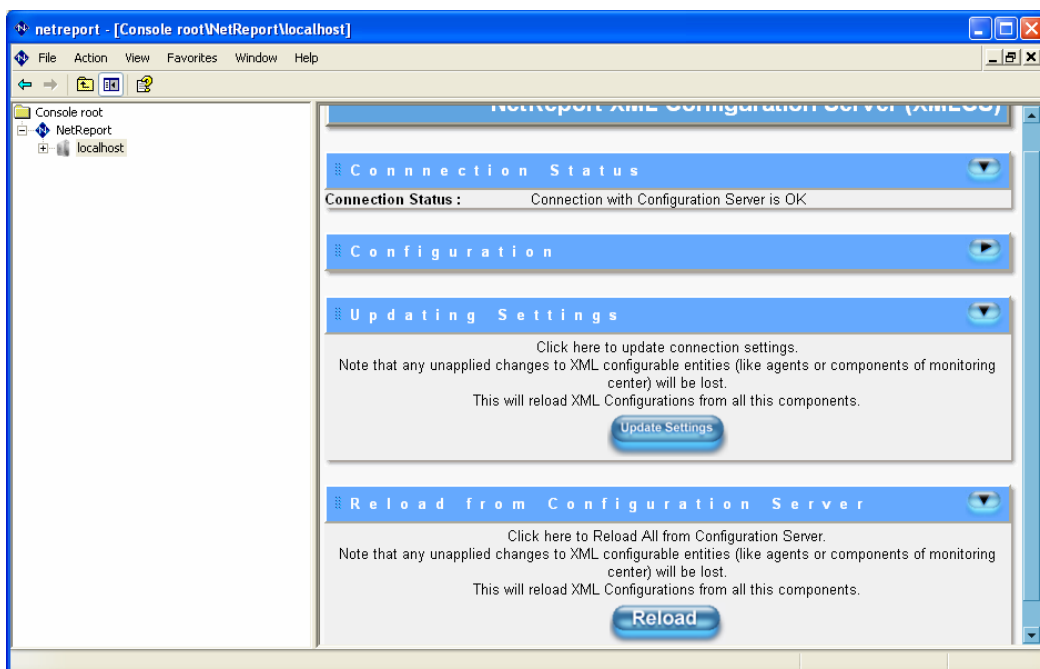


NET REPORT

3. Select **Console root > NetReport > [localhost]** in the left **Console root** pane. The **NetReport XML Configuration Server (XMLCS)** screen appears in the central pane.



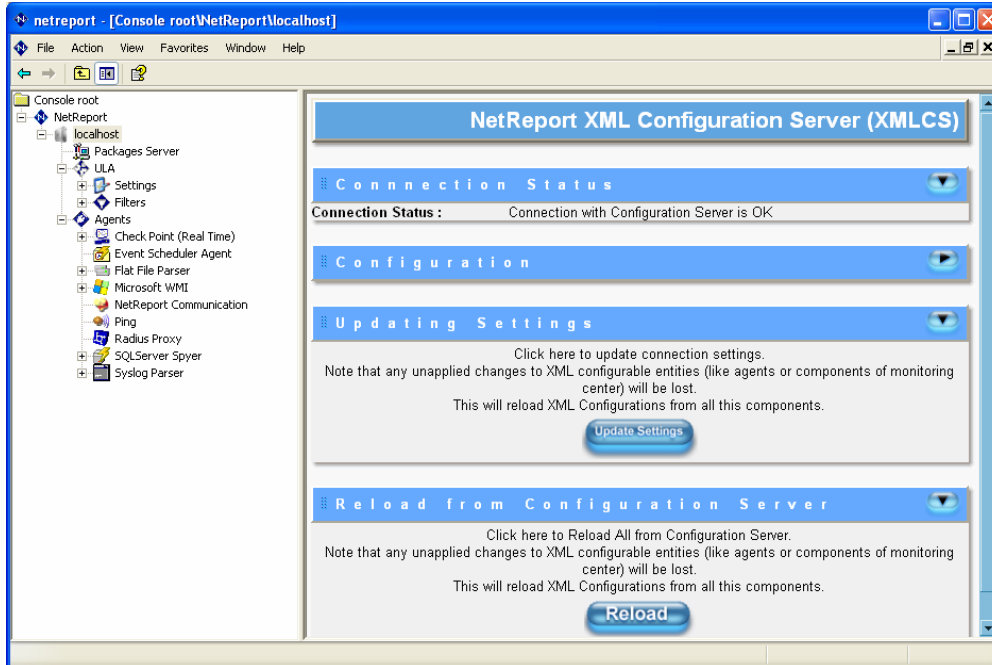
5. Enter the **Shared Secret** in the **Configuration** drop-down section **Shared Secret** field. In this example the **Shared Secret**: netreport. Please replace this by your own confidential Shared Secret.
6. Click **Update Settings** in the **Update Settings** drop-down section.





NET REPORT

Wait a moment for the new settings to be updated.
The **Net Report Management Console** tree structure will now become active.
7. Navigate freely through the Net Report Tree Structure. The Configuration has been successfully completed!



Status:

This behavior is by design.

See Also:

[Net Report Knowledge Base](#)