

For SAP



Simple and efficient decision making with self-service for SAP

Your goals:

- Efficiency:** the Right user gets the Right data in the Right format at the Right time.
- Simplicity:** client-less and intuitive deployment, quick and easy setup, easy of use, parameterize and customize
- Security:** automatic integration in your security policy
- Your environment:** your Cubes, Queries BEx, Queries SQ01, and BAI / RFC accessible directly
- Real Time:** access your SAP data in real time.

Click&DECiDE Business Application Intelligence (BAI) Edition for SAP is built to allow SAP solution users an easy data access to their Business Warehouse (SAP BW), a real time SAP ECC data access (using SAP SQ01 QUERIES & BAPI / RFC), and to consolidate those data, within SAP FI, CO, SD, MM, PP, QM, PM/CS, RH... Users can create reports, cubes, ad-hoc queries, and make them immediately available through a web portal, to colleagues, partners and customers. The security, performance and privacy rules established by the IT department following SAP recommendations are respected.

CUBE

Users find **their Cubes** created in **SAP BW**, as well as **their Queries BEx** with the settings, and they can directly create reports, integrate them into Excel, PowerPivot, or use them in a Cube exploited through the web.

QUERY SQ01

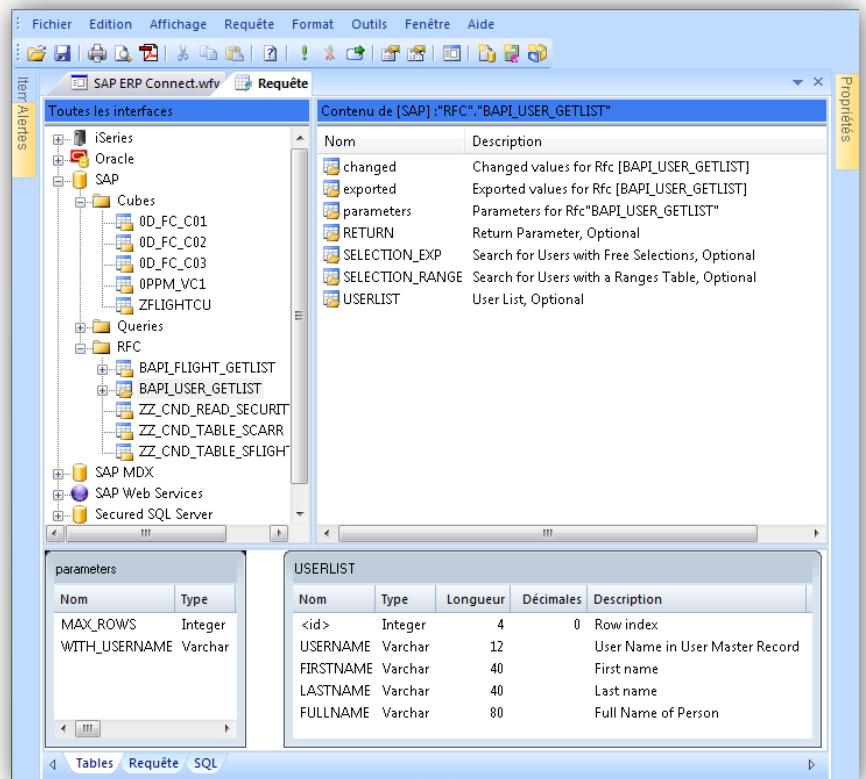
Users find **their SQ01 Queries** with their variants created in SAP, and based on real time data, create reports, integrate them into Excel, PowerPivot, or use them in a Cube exploited through the web.

BAPI / RFC

The advisor can **create ABAP modules** to provide user-specific information drawn from SAP. Users can, from these real-time data, build reports, integrate them into Excel, PowerPivot, or use them in a Cube exploited through the web.

ABAP

From the SAP environment, **Click&DECiDE Notify can be invoked in ABAP** so that it can, among other things, transfer data to another database, generate reports and send them by mail or RSS feed.



SAP Integration

Click&DECiDE guarantees by the usage of **ERP Connect (SAP certified product)**, a seamless integration with SAP!

Self-service Business Intelligence!

Click&DECiDE allows users of the company and their partners to:

Relevance

- access to **all data** they need,
- access to data **regardless of the origin**,
- perform **ad hoc queries** on heterogeneous sources,
- work on **real-time data** online as offline data,

Results

- quickly obtain **quality results**,
- design interactive **dashboards**,
- perform **multidimensional analysis** on OLAP Cubes
- integrate BI and Microsoft Office Excel or **PowerPivot**
- **optimize and speed up** decision-making,

Mastery

- maintain the data separation by **group, role and position** in the organization,
- share internally and externally the results through a **web portal**,
- connect the BI to business applications to **optimize the governance**,
- respect the data access **security rule** set by the IT,
- meet the desired **performance** goals.

Relevant data

You receive only the data which are relevant to you, and only when your **key indicators (KPI)** have reached the **thresholds** you set, in the requested report format.

You set your criteria's, their critical values and you can access real-time data, automatically run ad-hoc queries and produce reports, design alerts to distribute them using various and very flexible ways like **RSS feed**, **Web Parts**, **SharePoint**, or even **email**...

Data Sources

- SAP BW,
- SAP Bex,
- SAP Queries SQ01,
- SAP BAPI / RFC,
- IBM iSeries AS/400,
- IBM DB2-UDB,
- IBM Mainframe
- Oracle,
- Microsoft SQL Server,
- Microsoft Dynamics
- ODBC,
- WEB Services,
- SAGE,
- MOVEX,
- LAWSON M3,
- ASW,
- JDEdwards,
- Progress,
- BAAN,
- SOPIC
- Jeeves,
- ...

Seamless integration with Excel

Click&DECiDE create your **Excel** tables in **XLS** and **XLSX** format, feeds your existing Excel sheets using the **Web Query** feed as well as the powerful **PowerPivot** using the **ATOM** feed format.

Super ETL

Click&DECiDE can automate information transfer of your data to **all kinds of database**. Information coming from various databases can **easily be consolidated**.

the Right person gets the Right data in the Right format at the Right time

Family	Product	Ratio % Quantity	Ratio % Quantity	Ratio % Quantity	Ratio % Quantity	Total	Ratio % Quantity
INDUSTRIAL	INDUSTRIAL BICYCLE RACER	-37.77%	224	-46.15%	126	-31.75%	86
INDUSTRIAL	INDUSTRIAL BICYCLE RACER	29.92%	272	55.15%	122	72.13%	210
INDUSTRIAL	INDUSTRIAL BICYCLE RACER	-14.29%	72	-41.67%	102	107.25%	242
INDUSTRIAL	INDUSTRIAL BICYCLE RACER	-4.48%	214	100.00%	36	100.00%	320
INDUSTRIAL	INDUSTRIAL BICYCLE RACER	-17.81%	110	-49.09%	36	96.43%	110
INDUSTRIAL	INDUSTRIAL BICYCLE RACER	3.42%	151	-49.67%	76	102.63%	154
INDUSTRIAL	INDUSTRIAL BICYCLE RACER	-43.97%	344	-57.56%	146	231.51%	484
INDUSTRIAL	INDUSTRIAL BICYCLE RACER	63.16%	8	100.00%	8	15.4	220
INDUSTRIAL	INDUSTRIAL BICYCLE RACER	-63.85%	66	-40.00%	36	188.89%	104
INDUSTRIAL	INDUSTRIAL BICYCLE RACER	31.77%	110	100.00%	25	32.00%	33
INDUSTRIAL	INDUSTRIAL BICYCLE RACER	30.32%	240	-12.65%	214	-65.61%	96
INDUSTRIAL	INDUSTRIAL BICYCLE RACER	38.19%	174	-76.00%	42	247.62%	146
INDUSTRIAL	INDUSTRIAL BICYCLE RACER	-70.54%	38	100.00%	60	100.00%	166
INDUSTRIAL	INDUSTRIAL BICYCLE RACER	0.00%	101	100.00%	101	100.00%	101
INDUSTRIAL	INDUSTRIAL BICYCLE RACER	-79.55%	45	-53.33%	21	184.75%	43
INDUSTRIAL	INDUSTRIAL BICYCLE RACER	9.77%	146	13.01%	165	-27.88%	119
INDUSTRIAL	INDUSTRIAL BICYCLE RACER	-49.84%	92	100.00%	61	14.42%	82
INDUSTRIAL	INDUSTRIAL BICYCLE RACER	77.55%	466	43.34%	486	62.45%	534
INDUSTRIAL	INDUSTRIAL BICYCLE RACER	33.51%	7207	58.41%	1154	115.64%	7200
INDUSTRIAL	INDUSTRIAL BICYCLE RACER						2000
INDUSTRIAL	INDUSTRIAL BICYCLE RACER						31.74%
INDUSTRIAL	INDUSTRIAL BICYCLE RACER						8643

