

Knowledge Base Article: Article 240

Change the Port Number for a Remote SQL Server Database

Date: February 11th, 2013

Problem:

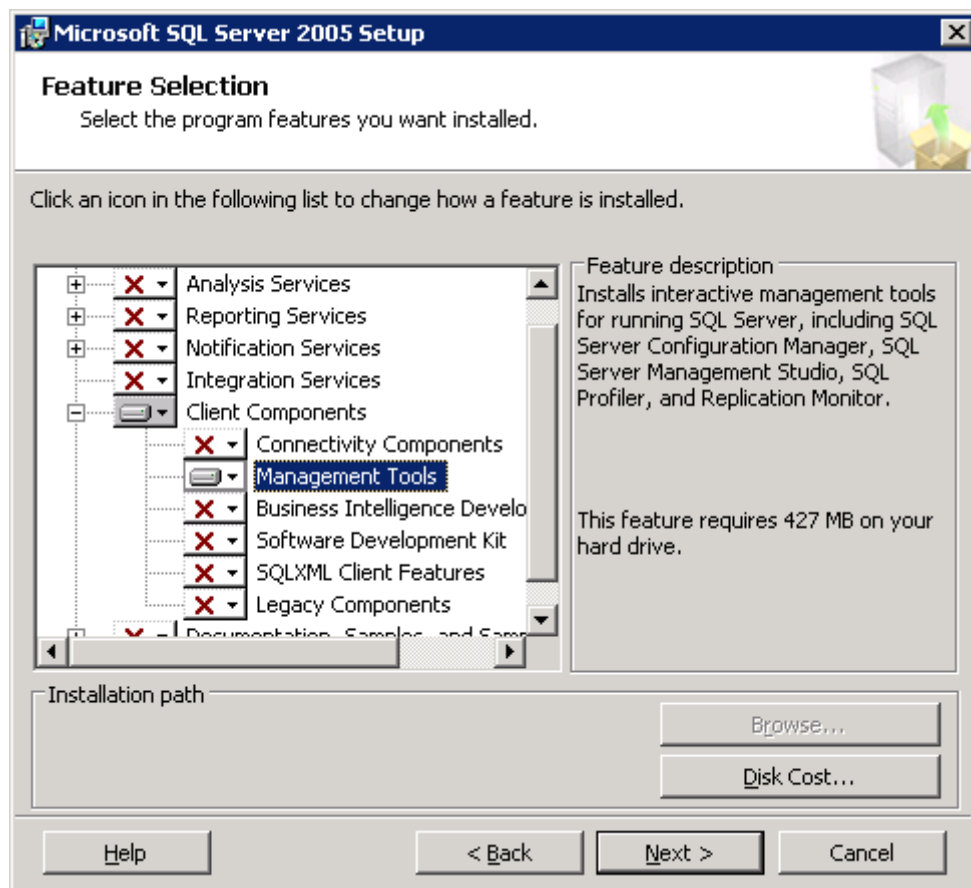
I cannot use the default Port number (1433) to access a remote SQL Server Database. How can I configure Click&DECiDE NSI (or BAI) to connect to the remote SQL Server database using another Port number?

Explanation:

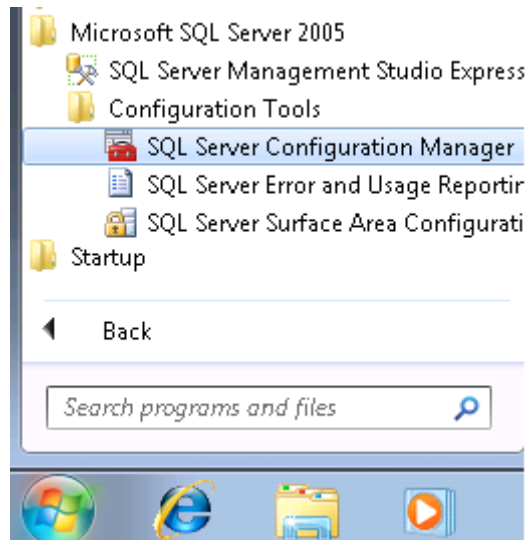
It is possible to create an Alias on the machine where Click&DECiDE NSI/BAI is installed so that the connection uses another Port number.

Solution:

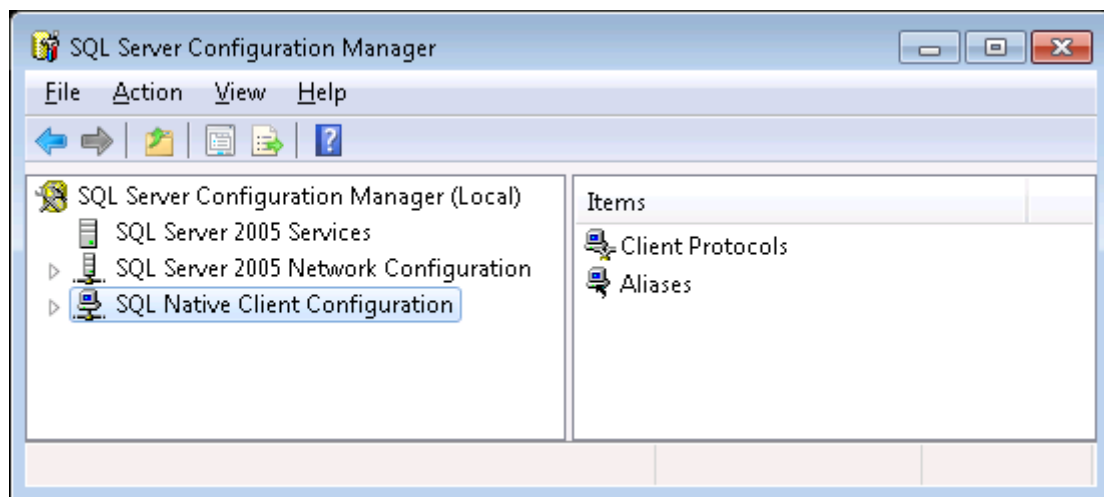
- Install the "**Management Tools**" for SQL Server on the machine where Click&DECiDE NSI/BAI is installed. They are available on the SQL Server Setup (example for SQL Server 2005):



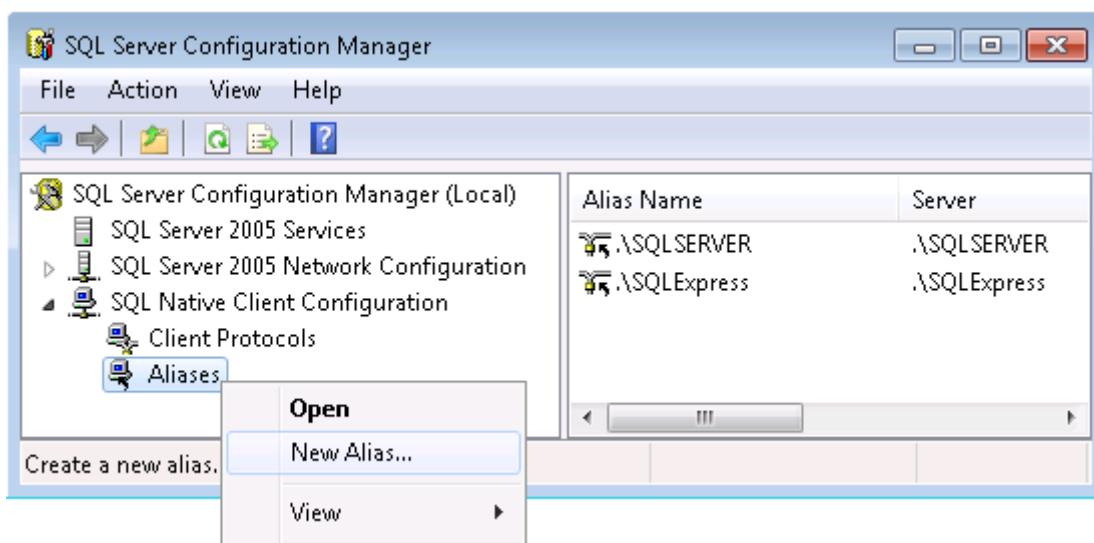
- Open the **SQL Server Configuration Manager**:
Start> All Programs> Microsoft SQL Server 20??> Configuration Tools> SQL Server Configuration Manager.



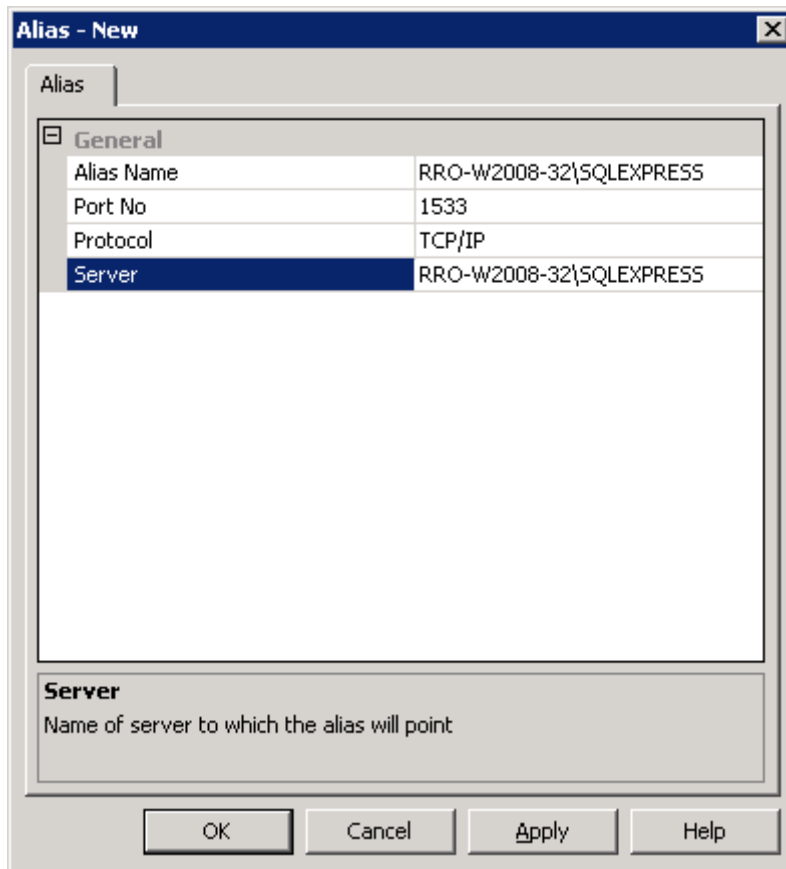
- Go to the **SQL Native Client Configuration** (or SQL Native Client Configuration (32 bits) if the machine is a 64 bits platform)



- Select the **Aliases** level and make a right mouse click to select "New Alias..."



- Enter an **Alias Name**, the **Port number** and the **Server Name** to be connected. For example:



General	
Alias Name	RRO-W2008-32\SQLEXPRESS
Port No	1533
Protocol	TCP/IP
Server	RRO-W2008-32\SQLEXPRESS

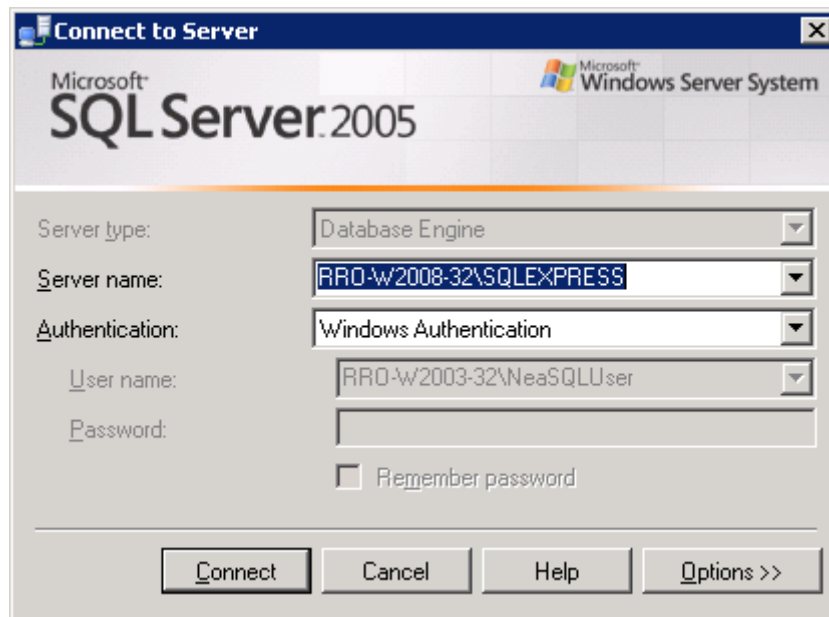
Server
Name of server to which the alias will point

OK Cancel Apply Help

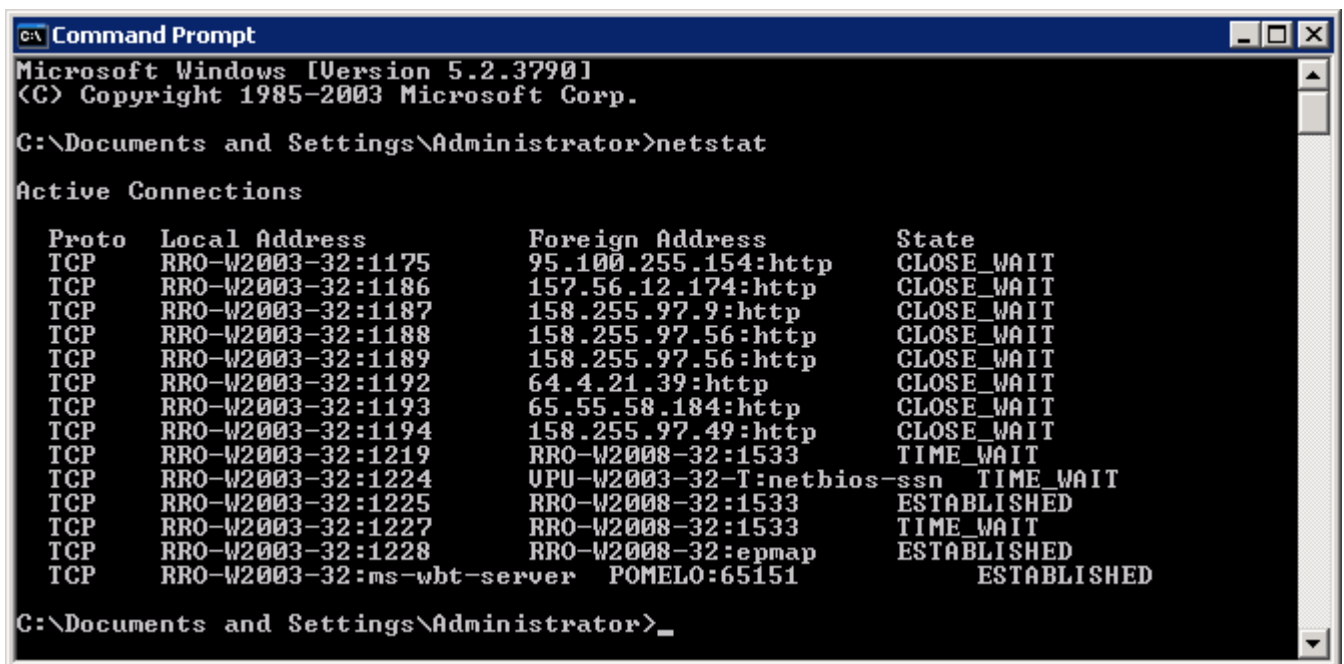
- Then, you just need to connect to this **Alias Name**.

Note: we recommend using the Server Name as Alias Name, because the Click&DECiDE NSI Log Source Configuration requires the Server Name and Instance Name in two separate fields.

With SQL Server Management Studio



We can see that we are well connected to the Port number 1533 instead of the 1433:



With Click&DECiDE NSI Log Source Configuration